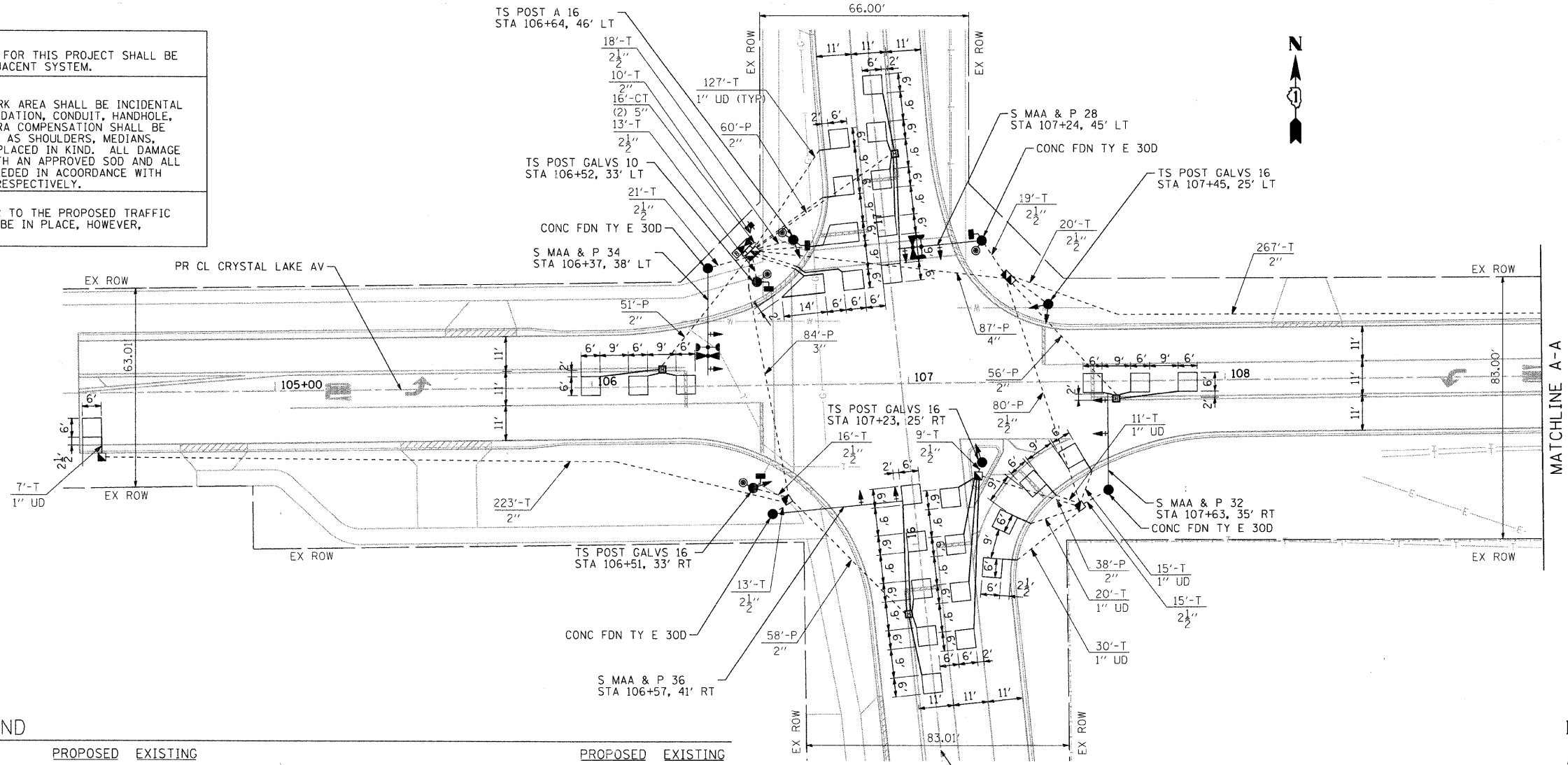


NOTE:
THE TRAFFIC SIGNAL CONTROL EQUIPMENT FOR THIS PROJECT SHALL BE "ECONOLITE" TO MATCH THE EXISTING ADJACENT SYSTEM.

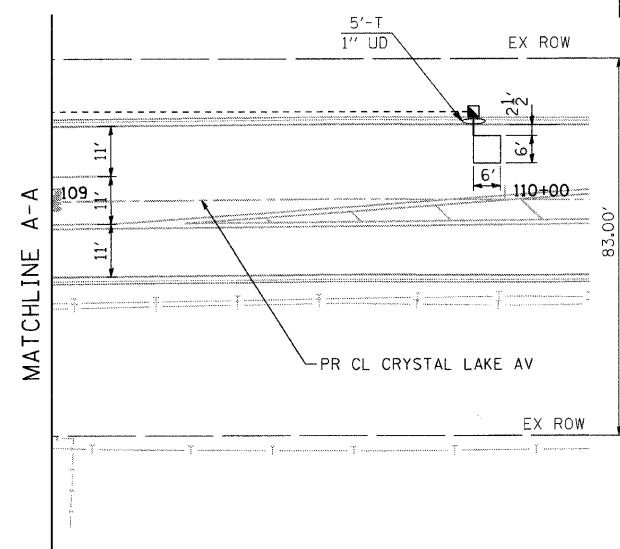
RESTORATION OF WORK AREA
RESTORATION OF THE TRAFFIC SIGNAL WORK AREA SHALL BE INCIDENTAL TO THE RELATED PAY ITEM SUCH AS FOUNDATION, CONDUIT, HANDHOLE, TRENCH AND BACKFILL, ETC., AND NO EXTRA COMPENSATION SHALL BE ALLOWED. ALL ROADWAYS SURFACES SUCH AS SHOULDERS, MEDIANS, SIDEWALKS, PAVEMENT, ETC. SHALL BE REPLACED IN KIND. ALL DAMAGE TO MOWED LAWNS SHALL BE REPLACED WITH AN APPROVED SOD AND ALL DAMAGE TO UNMOWED FIELDS SHALL BE SEEDING IN ACCORDANCE WITH STANDARD SPECIFICATIONS 252 AND 250 RESPECTIVELY.

NOTE:
STOP BARS ARE NOT TO BE PLACED PRIOR TO THE PROPOSED TRAFFIC SIGNALS BEING OPERATIONAL. THEY MUST BE IN PLACE, HOWEVER, AT THE TIME OF TURN-ON.



TRAFFIC SIGNALS LEGEND

	PROPOSED	EXISTING		PROPOSED	EXISTING
CONTROLLER	☒	☒	EMERGENCY VEHICLE LIGHT DETECTOR	⚡	⚡
SERVICE INSTALLATION	+	+	CONFIRMATION BEACON	⚡	⚡
SIGNAL HEAD	⬇	⬇	SIGNAL HEAD OPTICALLY PROGRAMMED	⬇ "P"	⬇ "P"
SIGNAL HEAD WITH BACKPLATE	⬇	⬇	VIDEO DETECTION CAMERA	📹	📹
SIGNAL HEAD, PEDESTRIAN	⬇	⬇	TELEPHONE CONNECTION	☐	☐
SIGNAL POST	●	○	ILLUMINATED SIGN, FIBER OPTIC "NO RIGHT TURN"	☑	☑ "E"
MAST ARM ASSEMBLY AND POLE, STEEL	●	○	ILLUMINATED SIGN, FIBER OPTIC "NO LEFT TURN"	☑	☑ "E"
MAST ARM ASSEMBLY AND POLE, ALUMINUM	●	○	CONDUIT SPLICE	⚡	⚡
COMBINATION MAST ARM ASSEMBLY AND POLE, STEEL WITH LUMINAIRE	●	○	WOOD POLE	⊙	⊙ "E"
HANDHOLE	☐	☐	RACEWAY FOR MAGNETIC DETECTOR, TYPE I OR TYPE II	⎓	⎓ "E"
HEAVY DUTY HANDHOLE	☐	☐	VEHICLE DETECTOR, NON COMPENSATED MAGNETIC TYPE	⎓	⎓
DOUBLE HANDHOLE	☐	☐	RAILROAD CONTROL CABINET	☒	☒ "E"
G.S. CONDUIT IN TRENCH (T) OR PUSHED (P)	—	—	UNINTERRUPTABLE POWER SUPPLY	☐	☐
PEDESTRIAN PUSHBUTTON DETECTOR	●	●			
DETECTOR LOOP	☐	☐			
CAST IRON JUNCTION BOX	⊙	⊙ "E"			
COMMON TRENCH	CT				
UNIT DUCT	UD				



<p>SEC Group, Inc. Engineering Surveying Planning Landscape Architecture Midwest • Yorkville • New Lenex • Chicago www.secgroupinc.com</p>	USER NAME = char-ike	DESIGNED - JJS	REVISED -	MCHENRY COUNTY DIVISION OF TRANSPORTATION	TRAFFIC SIGNAL INSTALLATION PLAN CRYSTAL LAKE AV AT PINGREE RD			F.A. RTE. 0116	SECTION 08-00327-01-CH	COUNTY MCHENRY	TOTAL SHEETS 56	SHEET NO. 32
	PLOT SCALE = 1" = 20'	CHECKED - CP	REVISED -		SCALE: 1" = 20'	SHEET NO. 5 OF 7 SHEETS	STA. TO STA.	FED. ROAD DIST. NO.	ILLINOIS FED. AID PROJECT	CONTRACT NO. 63144		
	PLOT DATE = 2/13/2009	DATE - 2/13/09	REVISED -									

080154
C:\21-269-06
080154-25-01.dgn