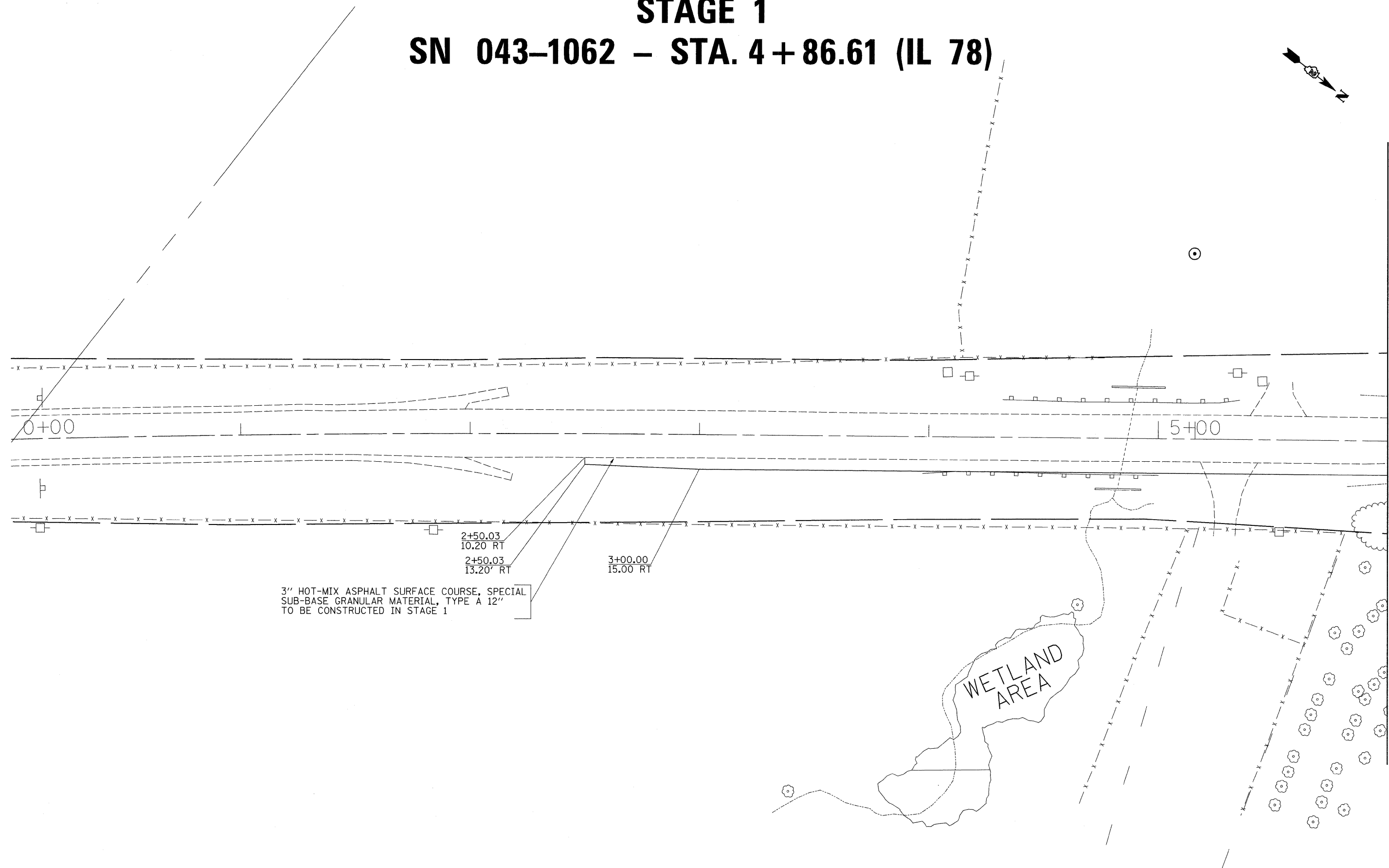
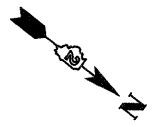


STAGE 1

SN 043-1062 - STA. 4+86.61 (IL 78)



3" HOT-MIX ASPHALT SURFACE COURSE, SPECIAL
SUB-BASE GRANULAR MATERIAL, TYPE A 12"
TO BE CONSTRUCTED IN STAGE 1

2+50.03
10.20' RT
2+50.03
13.20' RT
3+00.00
15.00' RT



MATCH LINE STA. 6+00

FILE NAME c:\pwork\pwi001\HENSONKE\dms33697\08787stg.dgn	USER NAME = hensonke	DESIGNED -	REVISED -	STATE OF ILLINOIS DEPARTMENT OF TRANSPORTATION	STAGE 2 DETAILS - SN 043-1062			F.A.P. RTE. 642	SECTION (10,11)T	COUNTY JODAVIESS	TOTAL SHEETS 283	SHEET NO. 59
PLOT SCALE = 20.0000' / IN.		CHECKED -	REVISED -		SCALE: 20	SHEET NO. OF SHEETS	STA. 0+00 TO STA. 6+00	CONTRACT NO. 64D07				
PLOT DATE = Tue Sep 30 11:07:43 2008		DATE -	REVISED -		FED. ROAD DIST. NO. ILLINOIS FED. AID PROJECT							