

STATE OF ILLINOIS
DEPARTMENT OF TRANSPORTATION
DIVISION OF HIGHWAYS

**PROPOSED
HIGHWAY PLANS**

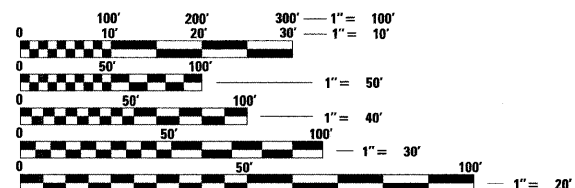
FAP ROUTE 17 (IL 64)
SECTION 101BR-4
PROJECT BRF-0017(127)
OGLE COUNTY
BRIDGE REPLACEMENT

C-92-038-08

R7E

FOR INDEX OF SHEETS, SEE SHEET NO. 2
FOR STATE STANDARDS, SEE SHEET NO. 2

DESIGN DESIGNATION
1,650 (2031) - MINOR ARTERIAL



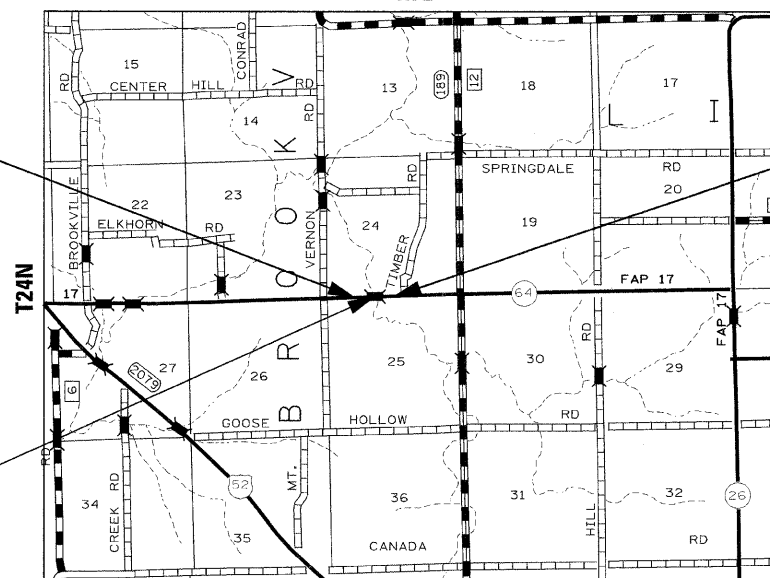
FULL SIZE PLANS HAVE BEEN PREPARED USING STANDARD ENGINEERING SCALES. REDUCED SIZED PLANS WILL NOT CONFORM TO STANDARD SCALES. IN MAKING MEASUREMENTS ON REDUCED PLANS, THE ABOVE SCALES MAY BE USED.

J.U.L.I.E.
JOINT UTILITY LOCATION INFORMATION FOR EXCAVATION
1-800-892-0123
OR 811

PROJECT ENGINEER: MASOOD AHMAD
SQUAD LEADER: SAMEER (SAM) A. ABDULLAH
815-284-5935
PROJECT MANAGER: GREGORY R. BRUMM
DLZ ILLINOIS, INC.
847-640-0840

CONTRACT NO. 64D11
BROOKVILLE TOWNSHIP 24 & 25

IMPROVEMENT BEGINS
STA 120 + 32.51



IMPROVEMENT ENDS
STA 128 + 50.00

GROSS LENGTH OF PROJECT = 817.49 LIN. FT. = 0.15 MI.
NET LENGTH = 817.49 LIN. FT. = 0.15 MI.

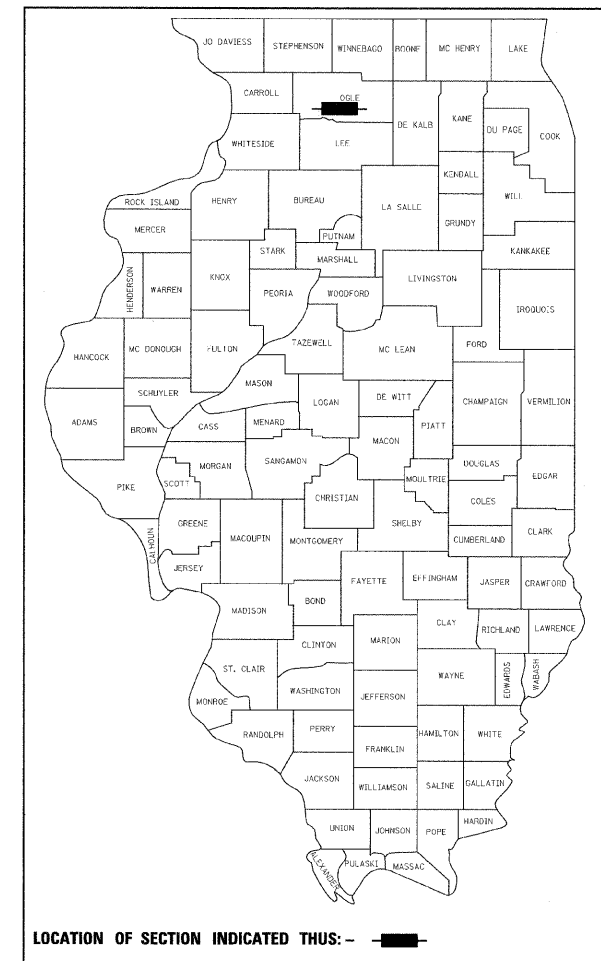
ROADWAY AND STRUCTURES DESIGNED BY

SEAL: Gregory R. Brumm, Registered Professional Engineer, No. 048216, Expires 11-30-2009.

SEAL: Peter R. Dombrowski, Registered Professional Engineer, No. 6519, Expires 11-30-2010.

F.A.P. RTE.	SECTION	COUNTY	TOTAL SHEETS	SHEET NO.
17	101BR-4	OGLE	60	1
FED. ROAD DIST. NO.		ILLINOIS	CONTRACT NO. 64D11	

D-92-051-07



LOCATION OF SECTION INDICATED THUS: - [thick black line] -

STATE OF ILLINOIS
DEPARTMENT OF TRANSPORTATION
DIVISION OF HIGHWAYS

SUBMITTED *December 2* 20 *08*

George F. Ryan
DEPUTY DIRECTOR OF HIGHWAYS, REGION ENGINEER

March 27, 2009
Charles G. Ingersoll
ENGINEER OF DESIGN AND ENVIRONMENT

March 27, 2009
Christina M. Reed
DIRECTOR OF HIGHWAYS, CHIEF ENGINEER

PRINTED BY THE AUTHORITY
OF THE STATE OF ILLINOIS