

STATE OF ILLINOIS  
DEPARTMENT OF TRANSPORTATION

ROUTE NO.	SECTION	COUNTY	SHEET	SHEET NO.
F.A.P. 17	101BR-4	OGLE	60	21
FED. ROAD DIST. NO. 2		ILLINOIS	FED. AID PROJECT	
		Contract # 64D11		

WEST APPROACH

EAST APPROACH

NORTH EDGE OF SHOULDER

Location	Station	Offset	Theoretical Grade Elevations
W. END WEST APPR. PAV'T.	124+03.58	-16.00	789.82
A1	124+13.58	-16.00	790.01
A2	124+23.58	-16.00	790.20
E. END WEST APPR. PAV'T.	124+33.58	-16.00	790.39

SOUTH EDGE OF PAVEMENT

Location	Station	Offset	Theoretical Grade Elevations
W. END WEST APPR. PAV'T.	124+13.77	12.00	790.10
A1	124+23.77	12.00	790.29
A2	124+33.77	12.00	790.48
E. END WEST APPR. PAV'T.	124+43.77	12.00	790.68

NORTH EDGE OF SHOULDER

Location	Station	Offset	Theoretical Grade Elevations
W. END EAST APPR. PAV'T.	125+36.77	-16.00	792.80
A3	125+46.77	-16.00	793.07
A4	125+56.77	-16.00	793.36
E. END EAST APPR. PAV'T.	125+66.77	-16.00	793.65

SOUTH EDGE OF PAVEMENT

Location	Station	Offset	Theoretical Grade Elevations
W. END EAST APPR. PAV'T.	125+46.96	12.00	793.16
A3	125+56.96	12.00	793.44
A4	125+66.96	12.00	793.73
E. END EAST APPR. PAV'T.	125+76.96	12.00	794.03

NORTH EDGE OF PAVEMENT

Location	Station	Offset	Theoretical Grade Elevations
W. END WEST APPR. PAV'T.	124+05.04	-12.00	789.93
A1	124+15.04	-12.00	790.12
A2	124+25.04	-12.00	790.31
E. END WEST APPR. PAV'T.	124+35.04	-12.00	790.51

SOUTH EDGE OF SHOULDER

Location	Station	Offset	Theoretical Grade Elevations
W. END WEST APPR. PAV'T.	124+15.23	16.00	790.04
A1	124+25.23	16.00	790.23
A2	124+35.23	16.00	790.43
E. END WEST APPR. PAV'T.	124+45.23	16.00	790.63

NORTH EDGE OF PAVEMENT

Location	Station	Offset	Theoretical Grade Elevations
W. END EAST APPR. PAV'T.	125+38.23	-12.00	792.92
A3	125+48.23	-12.00	793.20
A4	125+58.23	-12.00	793.48
E. END EAST APPR. PAV'T.	125+68.23	-12.00	793.77

SOUTH EDGE OF SHOULDER

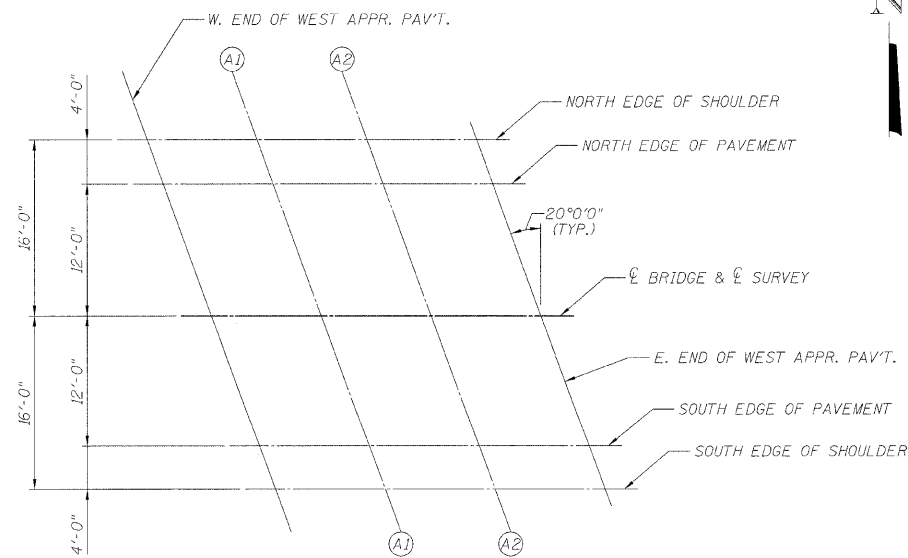
Location	Station	Offset	Theoretical Grade Elevations
W. END EAST APPR. PAV'T.	125+48.42	16.00	793.12
A3	125+58.42	16.00	793.40
A4	125+68.42	16.00	793.69
E. END EAST APPR. PAV'T.	125+78.42	16.00	793.99

ℓ BRIDGE & ℓ SURVEY

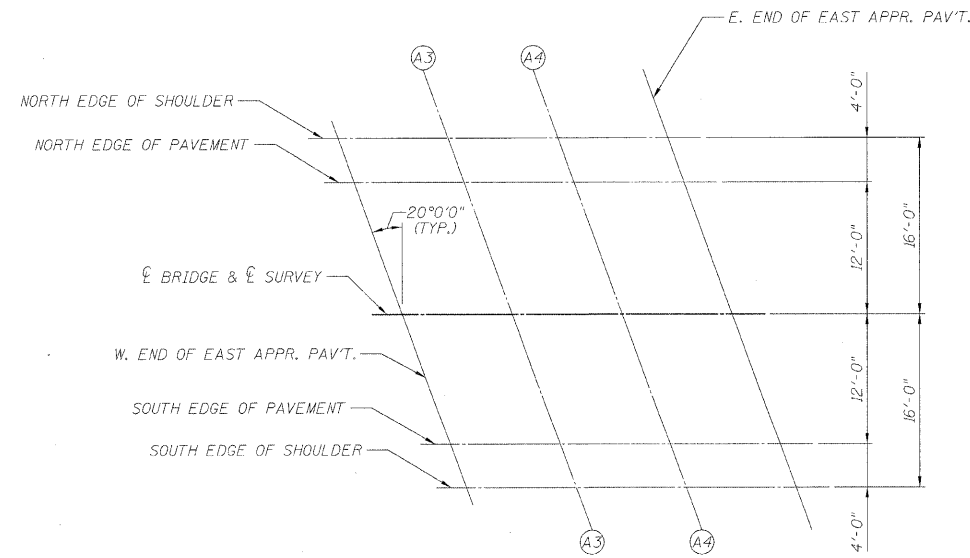
Location	Station	Offset	Theoretical Grade Elevations
W. END WEST APPR. PAV'T.	124+09.40	0.00	790.20
A1	124+19.40	0.00	790.39
A2	124+29.40	0.00	790.58
E. END WEST APPR. PAV'T.	124+39.40	0.00	790.78

ℓ BRIDGE & ℓ SURVEY

Location	Station	Offset	Theoretical Grade Elevations
W. END EAST APPR. PAV'T.	125+42.60	0.00	793.23
A3	125+52.60	0.00	793.51
A4	125+62.60	0.00	793.79
E. END EAST APPR. PAV'T.	125+72.60	0.00	794.09



**PLAN**  
(WEST APPROACH)



**PLAN**  
(EAST APPROACH)

DESIGNED	WSP
CHECKED	ASP
DRAWN	BEW
CHECKED	ASP

**TOP OF SLAB ELEVATIONS**  
**IL 64 OVER FIVE MILE CREEK**  
**F.A.P. RT. 17 SECTION 101BR-4**  
**OGLE COUNTY**  
**STATION 124+91.00**  
**STRUCTURE NO. 071-0095**