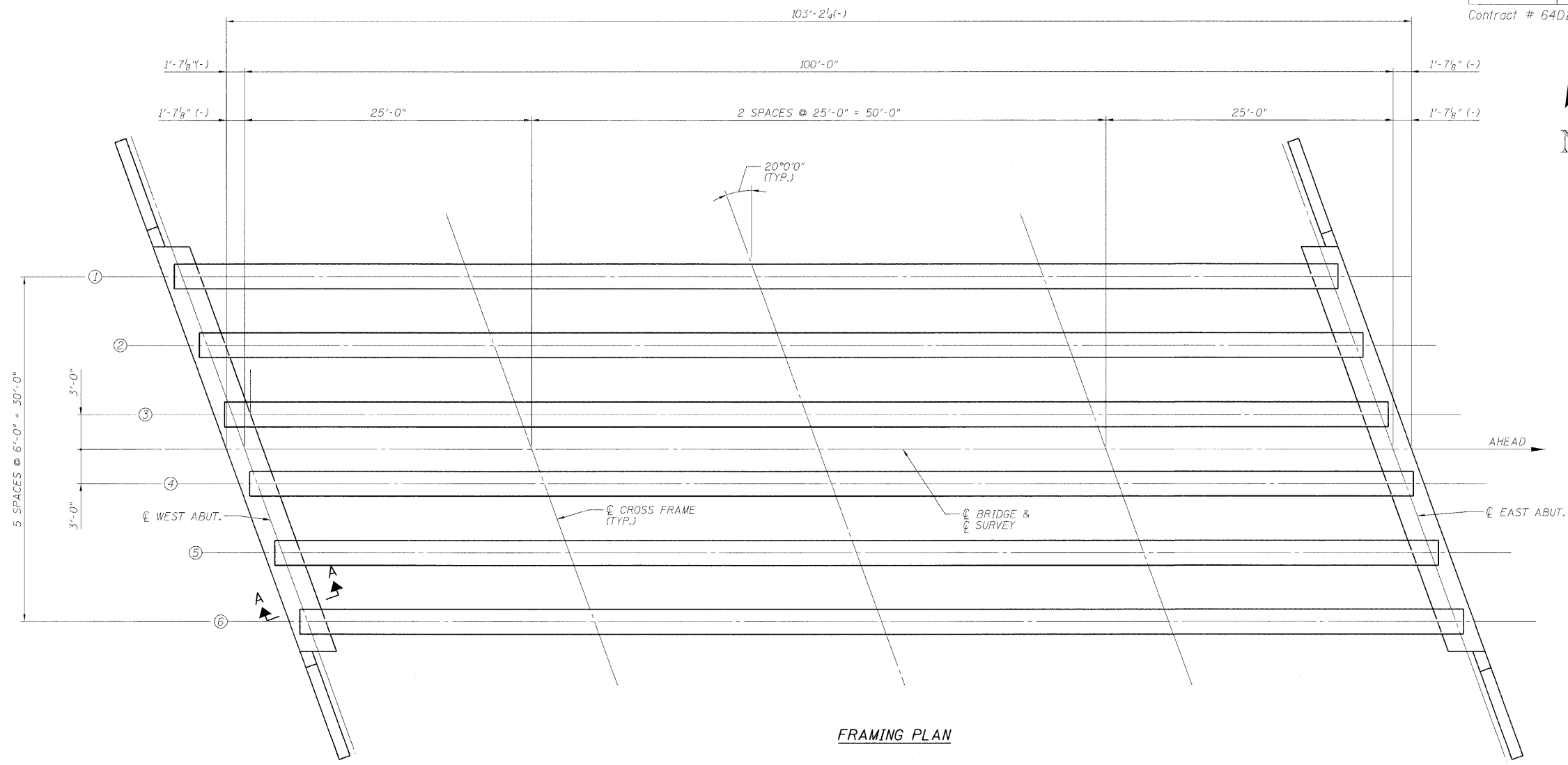


STATE OF ILLINOIS
DEPARTMENT OF TRANSPORTATION

ROUTE NO.	SECTION	COUNTY	SHEET NO.	SHEET NO.	SHEET NO. 9
F.A.P. 17	101BR-4	OGLE	60	26	SHEETS 19
FED. ROAD DIST. NO. 2	ILLINOIS	FED. AID PROJECT	Contract # 64D11		

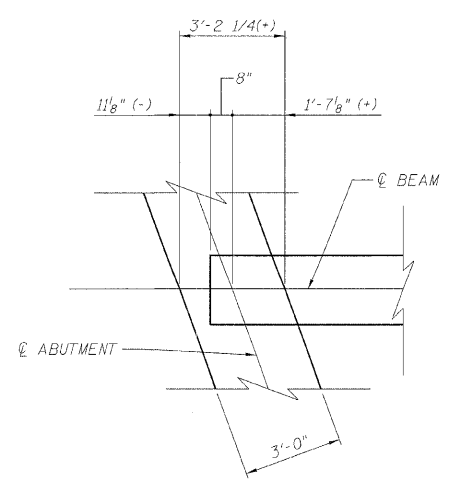


FRAMING PLAN

J	(in ⁴)	392,638
I'	(in ⁴)	783,841
S _b	(in ³)	12,224
S _b '	(in ³)	16,806
S _t	(in ³)	12,715
S _t '	(in ³)	30,794
DC1	(k/ft)	1.45
M _{DC1}	(k)	1,766.0
DC2	(k/ft)	0.15
M _{DC2}	(k)	187.5
DW	(k/ft)	0.27
M _{DW}	(k)	333.3
M ₄ + M _u	(k)	1,616.2

R _{DC1}	(k)	72.8
R _{DC2}	(k)	7.5
R _{DW}	(k)	13.3
R ₄ + R _u	(k)	94.5
R _{Total}	(k)	188.1

- I: NON-COMPOSITE MOMENT OF INERTIA OF BEAM SECTION (IN.4).
- I': COMPOSITE MOMENT OF INERTIA OF BEAM SECTION (IN.4).
- S_b: NON-COMPOSITE SECTION MODULUS FOR THE BOTTOM FIBER OF THE PRESTRESSED BEAM (IN.3).
- S_b': COMPOSITE SECTION MODULUS FOR THE BOTTOM FIBER OF THE PRESTRESSED BEAM (IN.3).
- S_t: NON-COMPOSITE SECTION MODULUS FOR THE TOP FIBER OF THE PRESTRESSED BEAM (IN.3).
- S_t': COMPOSITE SECTION MODULUS FOR THE TOP FIBER OF THE PRESTRESSED BEAM (IN.3).
- DC1: UN-FACTORED NON-COMPOSITE DEAD LOAD (KIPS/FT.).
- M_{DC1}: UN-FACTORED MOMENT DUE TO NON-COMPOSITE DEAD LOAD (KIP-FT.).
- DC2: UN-FACTORED LONG-TERM COMPOSITE (SUPERIMPOSED EXCLUDING FUTURE WEARING SURFACE) DEAD LOAD (KIPS/FT.).
- M_{DC2}: UN-FACTORED MOMENT DUE TO LONG-TERM COMPOSITE (SUPERIMPOSED EXCLUDING FUTURE WEARING SURFACE) DEAD LOAD (KIP-FT.).
- DW: UN-FACTORED LONG-TERM COMPOSITE (SUPERIMPOSED FUTURE WEARING SURFACE ONLY) DEAD LOAD (KIPS/FT.).
- M_{DW}: UN-FACTORED MOMENT DUE TO LONG-TERM COMPOSITE (SUPERIMPOSED FUTURE WEARING SURFACE ONLY) DEAD LOAD (KIP-FT.).
- M₄ + M_u: UN-FACTORED LIVE LOAD MOMENT PLUS DYNAMIC LOAD ALLOWANCE (IMPACT) (KIP-FT.).



PLAN AT ABUTMENT

NOTES:
SEE SHEET 12 OF 19 FOR CROSS FRAME DETAILS
FOR SECTION A-A, SEE SHEET 8 OF 19

DESIGNED	ASP
CHECKED	WSP
DRAWN	BGC
CHECKED	ASP

FRAMING PLAN
IL 64 OVER FIVE MILE CREEK
F.A.P. RT. 17 SECTION 101BR-4
OGLE COUNTY
STATION 124+91.00
STRUCTURE NO. 071-0095

