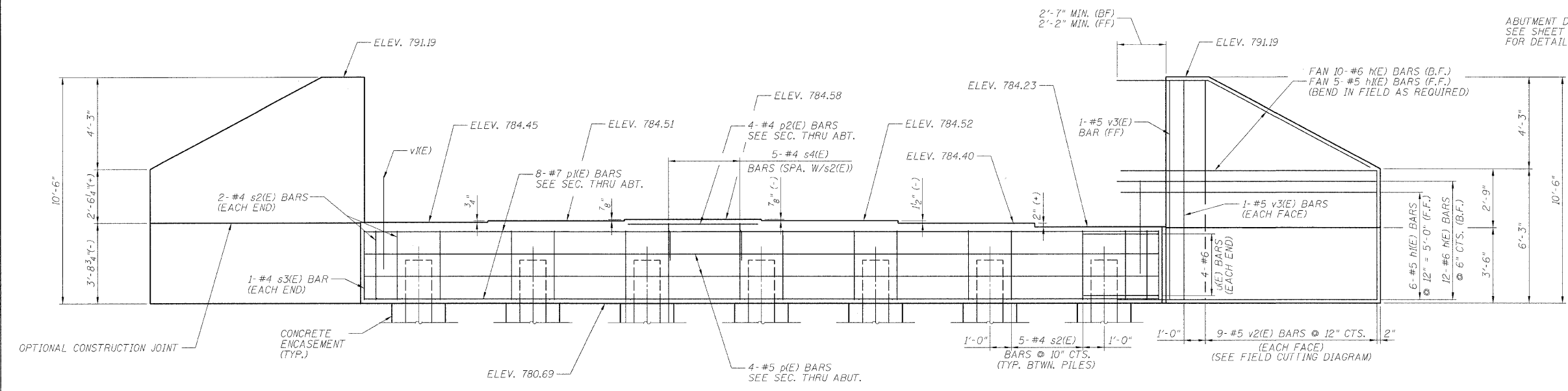


STATE OF ILLINOIS  
DEPARTMENT OF TRANSPORTATION

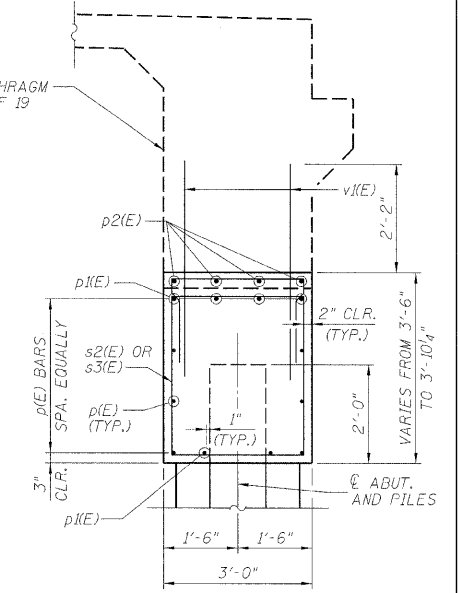
ROUTE NO.	SECTION	COUNTY	SHEET	SHEET	SHEET NO.
F.A.P. 17	101BR-4	OGLE	60	30	13
ILLINOIS					SHEETS 19

Contract # 64D11

NOTES:  
POUR STEPS MONOLITHICALLY WITH CAP.



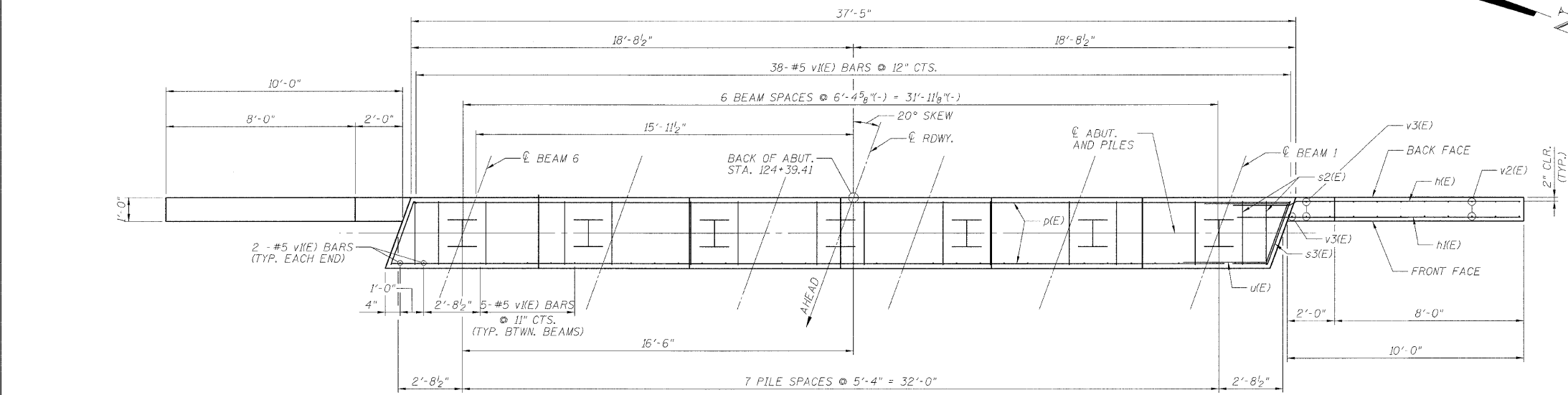
**ELEVATION**  
(LOOKING BACK)



**SEC. THRU ABUT.**

**BILL OF MATERIAL**

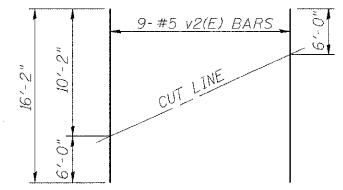
Bar	No.	Size	Length	Shape
h(E)	44	6	12'-5"	
h1(E)	22	5	12'-0"	
p1(E)	4	5	37'-1"	
p2(E)	8	7	37'-1"	
p2(E)	4	4	6'-0"	
s2(E)	34	4	12'-8"	
s3(E)	2	4	13'-0"	
s4(E)	5	4	6'-2"	
v1(E)	8	6	9'-10"	
v1(E)	67	5	4'-4"	
v2(E)	18	5	16'-2"	
v3(E)	6	5	10'-2"	
STRUCTURE EXCAVATION		CU.YD.	0	
CONCRETE STRUCTURES		CU.YD.	22.0	
REINFORCEMENT BARS, EPOXY COATED		POUND	2,987	
FURNISHING STEEL PILES HP 14 x 73		FOOT	147	
CONCRETE ENCASEMENT		CU.YD.	3.3	
SETTING PILES IN ROCK		EACH	7	



**PLAN**  
(LOOKING BACK)

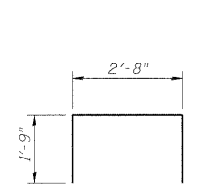
DESIGNED	WSP
CHECKED	ASP
DRAWN	BEW
CHECKED	WSP

**PILE DATA**  
TYPE: HP14X73  
NOMINAL REQUIRED BEARING: 883.7 KIPS  
FACTORED RESISTANCE AVAILABLE: 441.9 KIPS  
EST. LENGTH: 21.0'  
NO. PRODUCTION PILES: 7  
NO TEST PILES: 0  
ESTIMATED TOP OF ROCK ELEVATION: 767.00  
ROCK SOCKET DEPTH: 5 FEET  
ROCK SOCKET DIAMETER: 2.50 FEET

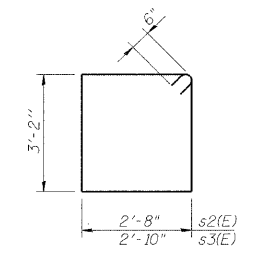


**FIELD CUTTING DIAGRAM**  
(2 SETS)

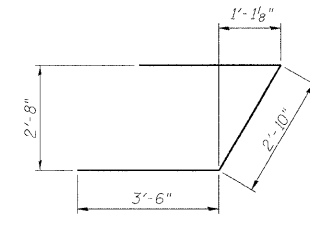
ORDER v2(E) BARS FULL LENGTH, CUT AS SHOWN AND USE REMAINDER OF BARS IN OPPOSITE FACE.



**BARS s4(E)**



**BARS s2(E) & s3(E)**



**BAR u(E)**

NOTES:  
FOR DETAILS OF PILES AND CONCRETE ENCASEMENT, SEE SHEET 15 OF 19.

**WEST ABUTMENT**  
**IL 64 OVER FIVE MILE CREEK**  
**F.A.P. RT. 17 SECTION 101BR-4**  
**OGLE COUNTY**  
**STATION 124+91.00**  
**STRUCTURE NO. 071-0095**

**DLZ** 85 W. Algonquin Rd. Ste. 220  
Arlington Heights IL 60005  
DLZ Illinois, Inc.