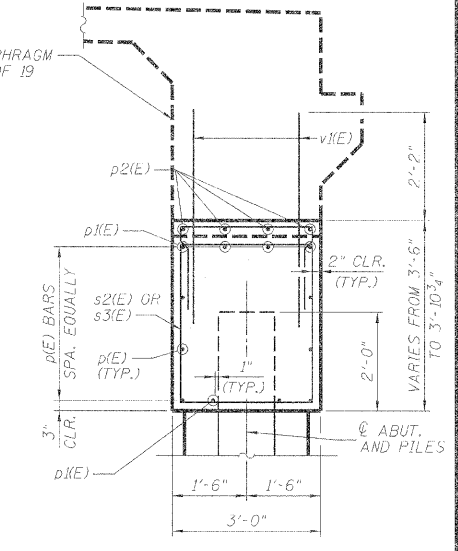
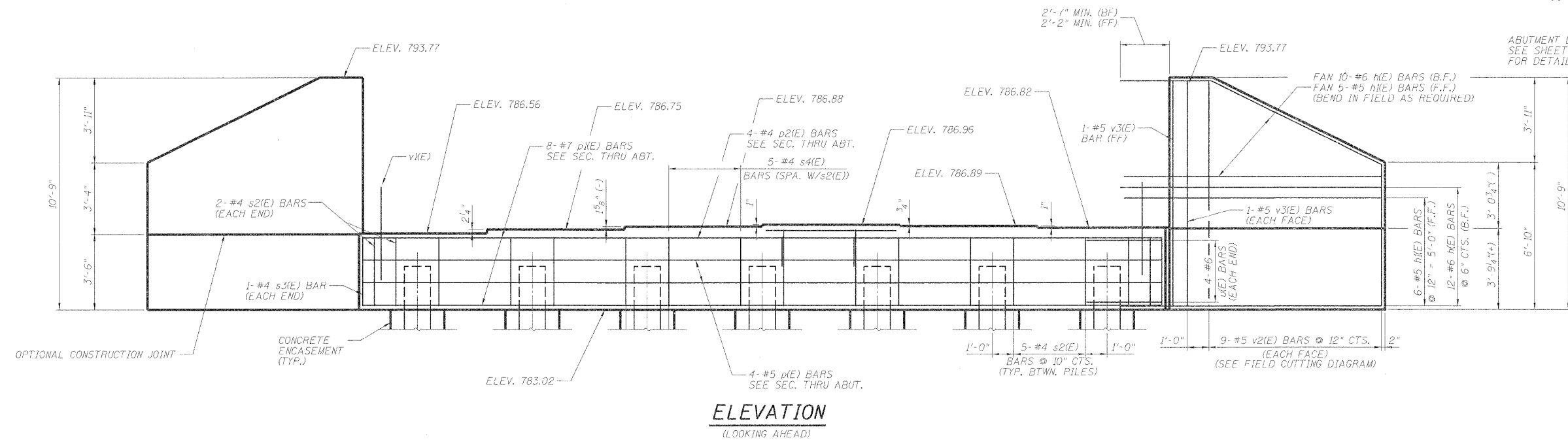


STATE OF ILLINOIS
DEPARTMENT OF TRANSPORTATION

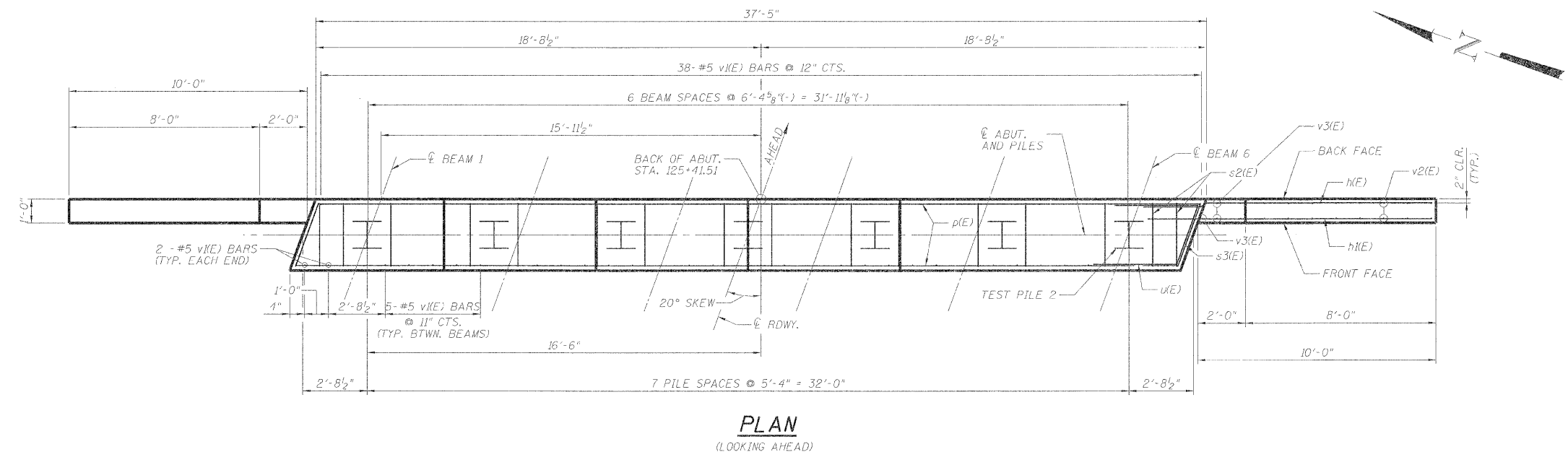
ROUTE NO.	SECTION	COUNTY	TOTAL SHEETS	SHEET	SHEET NO.
F.A.P. 17	101BR-4	OGLE	60	31	14
SHEETS 19					

Contract # 64D11

NOTES:
POUR STEPS MONOLITHICALLY WITH CAP.



SEC. THRU ABUT.



PLAN
(LOOKING AHEAD)

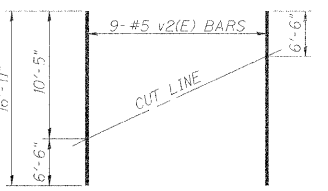
BILL OF MATERIAL

Bar	No.	Size	Length	Shape
h(E)	44	6	12'-5"	
h1(E)	22	5	12'-0"	
p(E)	4	5	37'-1"	
p1(E)	8	7	37'-1"	
p2(E)	4	4	6'-0"	
s2(F)	34	4	12'-8"	
s3(E)	2	4	13'-0"	
s4(E)	5	4	6'-2"	
u(E)	8	6	9'-10"	
v1(E)	67	5	4'-4"	
v2(E)	18	5	16'-11"	
v3(E)	6	5	10'-5"	
STRUCTURE EXCAVATION			CU.YD.	260
CONCRETE STRUCTURES			CU.YD.	22.2
REINFORCEMENT BARS, EPOXY COATED			POUND	3,002
FURNISHING STEEL PILES HP 14 x 73			FOOT	112
CONCRETE ENCASEMENT			CU.YD.	3.3
SETTING PILES IN ROCK			EACH	7

PILE DATA

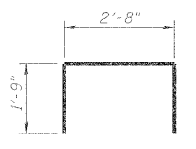
TYPE: HP14X73
NOMINAL REQUIRED BEARING: 883.7 KIPS
FACTORED RESISTANCE AVAILABLE: 441.9 KIPS
EST. LENGTH: 21.0'
NO. PRODUCTION PILES: 7
NO TEST PILES: 0
ESTIMATED TOP OF ROCK ELEVATION: 775.00
ROCK SOCKET DEPTH: 5 FEET
ROCK SOCKET DIAMETER: 2.50 FEET

DESIGNED	WSP
CHECKED	ASP
DRAWN	BEM
CHECKED	WSP

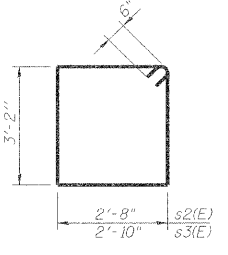


FIELD CUTTING DIAGRAM

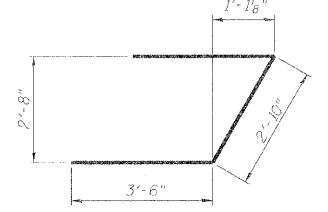
(2 SETS)
ORDER v2(E) BARS FULL LENGTH, CUT AS SHOWN AND USE REMAINDER OF BARS IN OPPOSITE FACE.



BARS s4(E)



BARS s2(E) & s3(E)



BAR u(E)

NOTES:
FOR DETAILS OF PILES AND CONCRETE ENCASEMENT, SEE SHEET 15 OF 19.

EAST ABUTMENT
IL 64 OVER FIVE MILE CREEK
F.A.P. RT. 17 SECTION 101BR-4
OGLE COUNTY
STATION 124+91.00
STRUCTURE NO. 071-0095

DLZ 85 W. Algonquin Rd. Ste. 220
Arlington Heights IL 60005