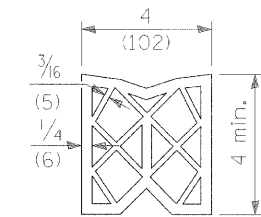
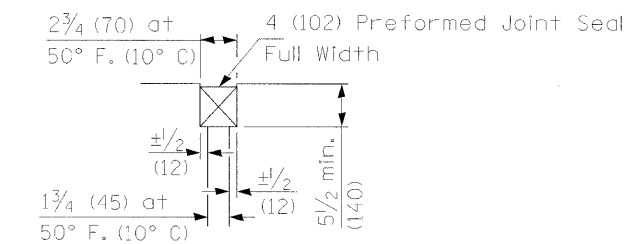


SECTION C-C

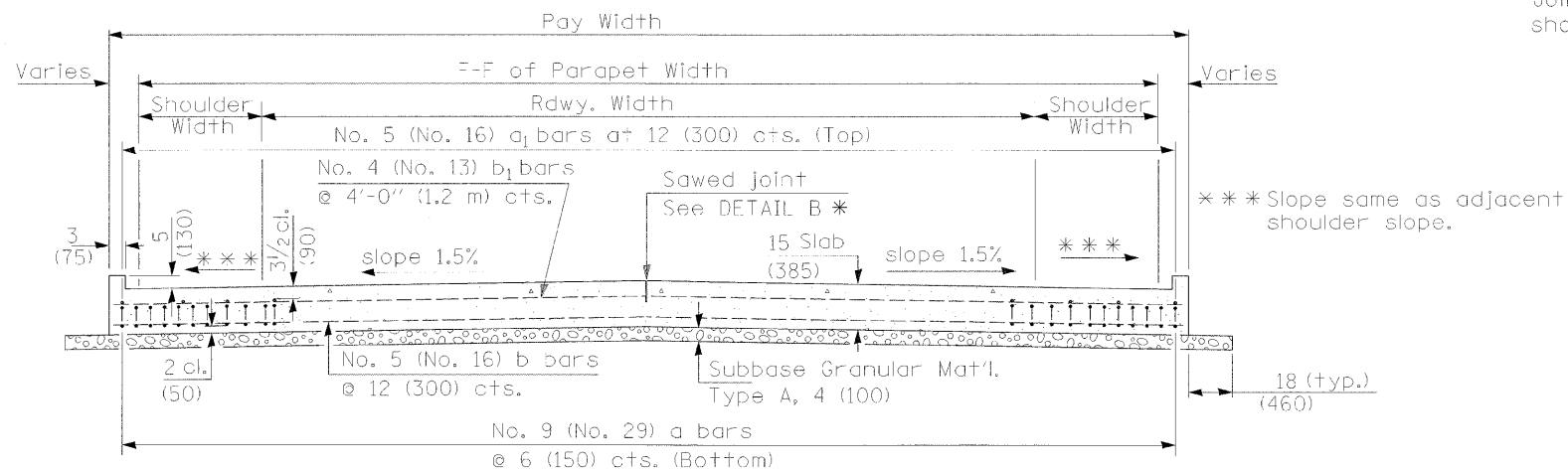
① Stagger No. 9 (No. 29) a bars as shown on plan - full width



PREFORMED JOINT SEAL



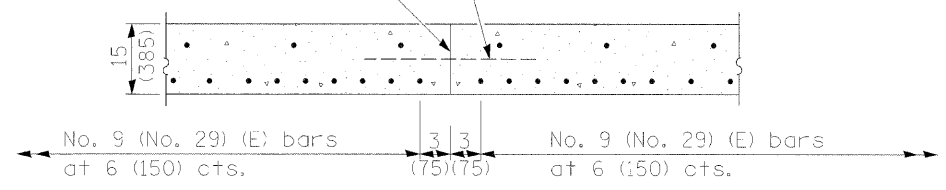
DETAIL A



SECTION D-D

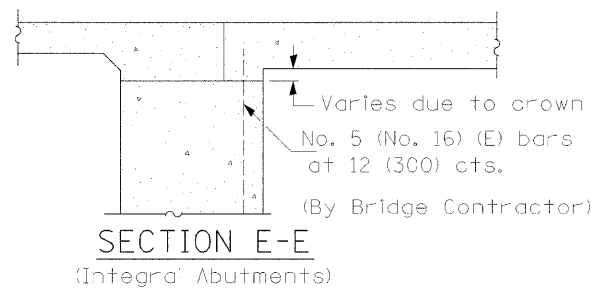
(See Plan for Dimensions not shown)

Longitudinal Construction Joint in accordance with details shown on Standard 420001.



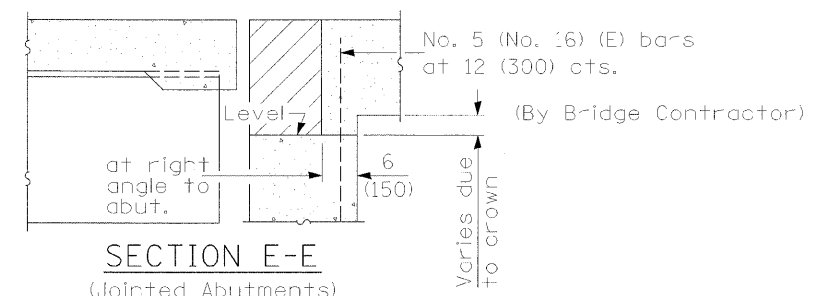
OPTIONAL LONGITUDINAL CONSTRUCTION JOINT

As approved by the Engineer, the Contractor may elect to reduce the widths of pour by use of the Optional Longitudinal Construction Joint shown. Joints shall be located at the edge of a traffic lane.



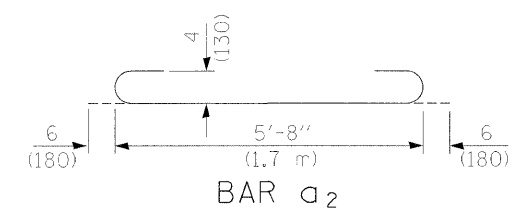
SECTION E-E

(Integral Abutments)

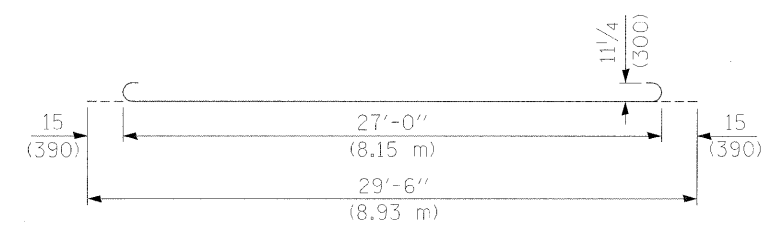


SECTION E-E

(Jointed Abutments)



BAR a₂



BAR a

DESIGN STRESSES

f_y = 60,000 p.s.i. (400 MPa)
 f'_c = 3,500 p.s.i. (24 MPa)
 n = 8.5

FILE NAME = #FILE#	USER NAME = #USER#	DESIGNED -	REVISIONS -	STATE OF ILLINOIS DEPARTMENT OF TRANSPORTATION	BRIDGE APPROACH PAVEMENT			F.A.P. RTE.	SECTION	COUNTY	TOTAL SHEETS	SHEET NO.
		DRAWN -	REVISIONS -					17	101BR-4	OGLE	60	39
		CHECKED -	REVISIONS -					CONTRACT NO. 64D11				
		DATE -	REVISIONS -					ILLINOIS FED. AID PROJECT				
				SCALE:	SHEET NO. 3 OF 4 SHEETS	STA.	TO STA.					