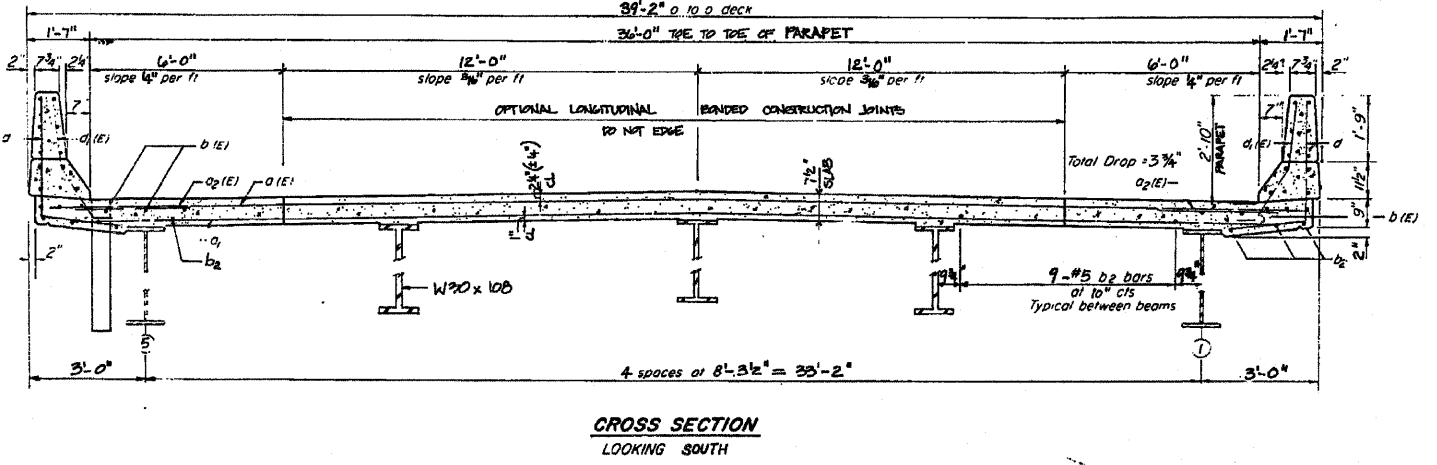
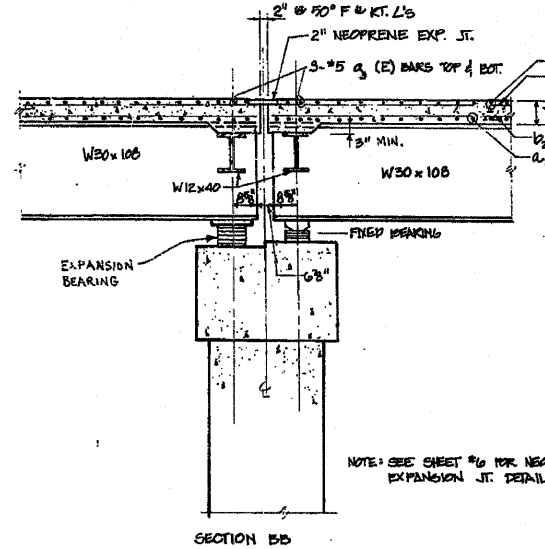
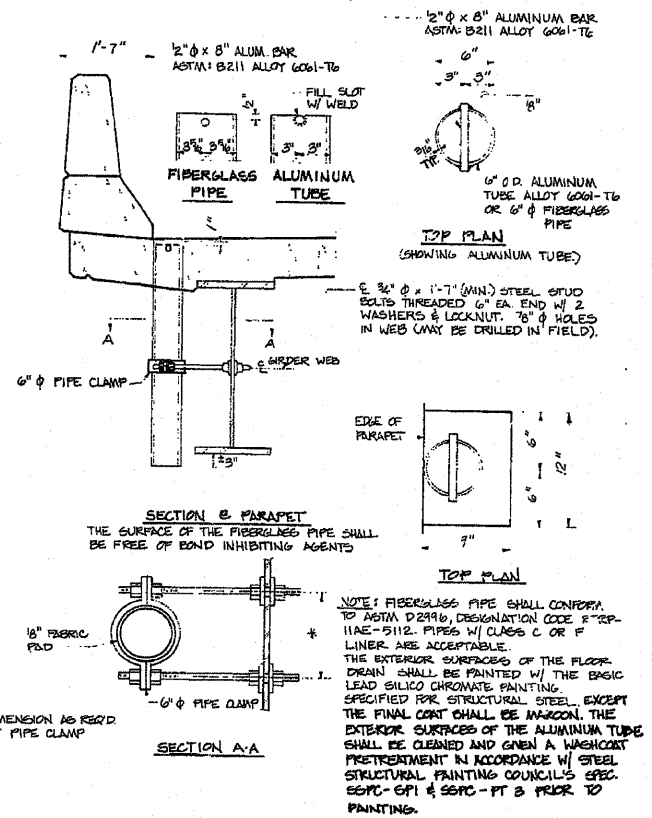
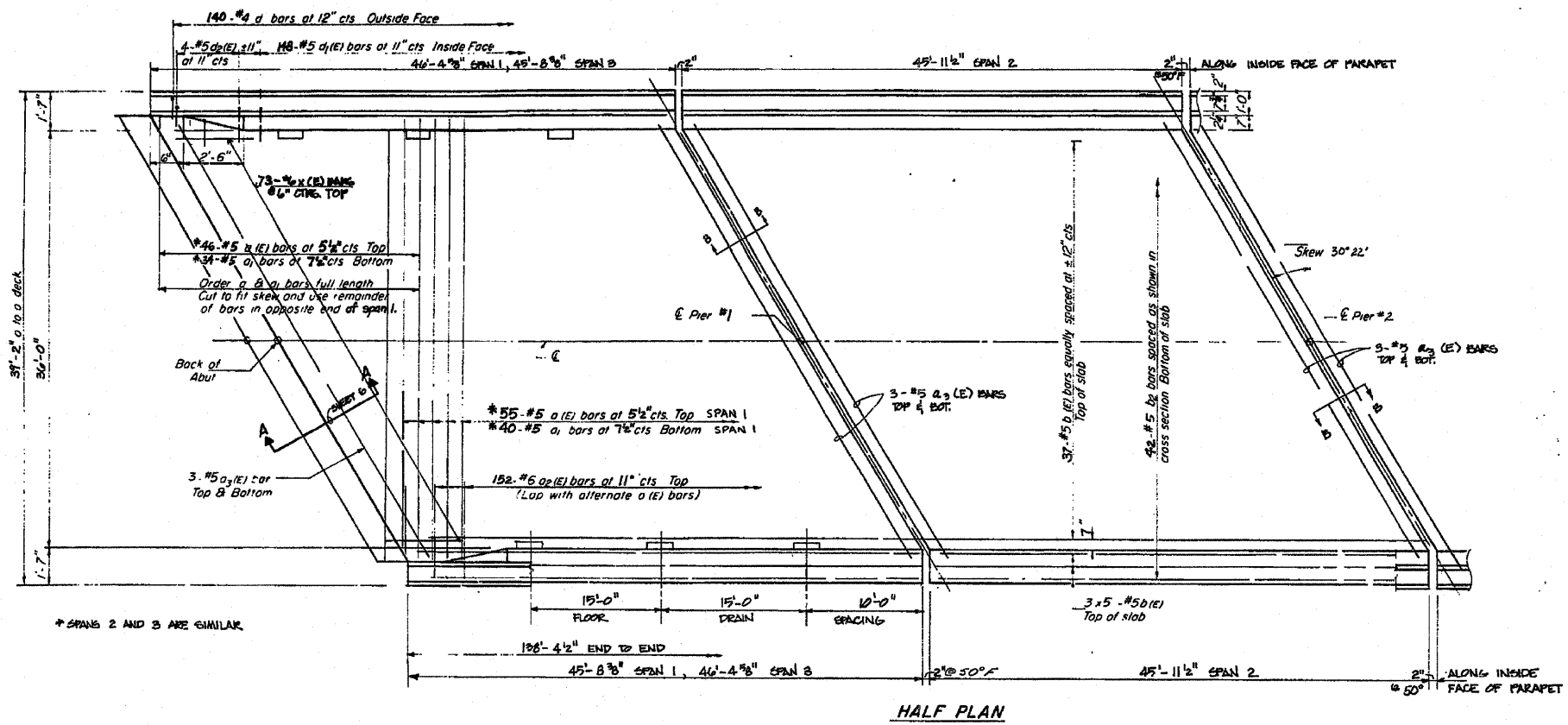


# FOR INFORMATION ONLY

PROJECT NO.	SECTION	COUNTY	TOTAL SHEETS	SHEET NO.
105 VBR	WHITESIDE	34	14	5
SHEETS 13				



**NOTES**  
See sheet #6 for superstructure details and Bill of Material  
Reinforcement bars designated (E) shall be epoxy coated. See Special Provisions  
Bars indicated thus 20 x 3-#5 etc indicates 20 lines of bars with 3 lengths per line

**DECK DETAILS**  
F.A. ROUTE 561 (ILLINOIS RT. 2)  
OVER C&NW RR AT GALT  
SECTION 105 VBR  
WHITESIDE COUNTY  
STA. 616+34.31

\* FAS 1197 (West Lincolnway Road) & FAP 308 (IL 84)  
\*\*D2 Bridge Painting 2009-3

FILE NAME = P:\PAINTING\64E93\PLA\Neng.dgn	USER NAME = jmkdj	DESIGNED -	REVISED -	<b>STATE OF ILLINOIS DEPARTMENT OF TRANSPORTATION</b>	<b>Existing Plans SN 098-0024</b>	F.A. RTE.	SECTION	COUNTY	TOTAL SHEETS	SHEET NO.
PLOT SCALE = 5/8" = 1' IN.	DRAWN -	REVISOR -	WHITESIDE			15	5			
PLOT DATE = Thu Jan 29 10:18:18 2009	CHECKED -	REVISOR -	CONTRACT NO. 64E93							
DATE -	REVISOR -	ILLINOIS FED. AID PROJECT								