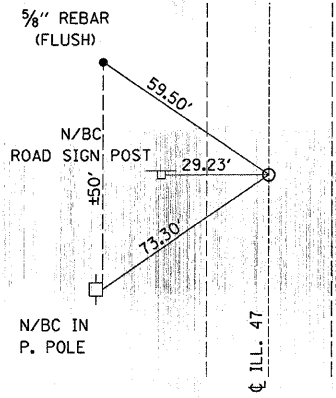
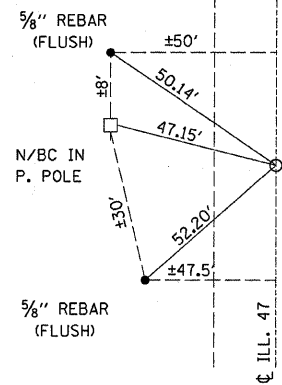


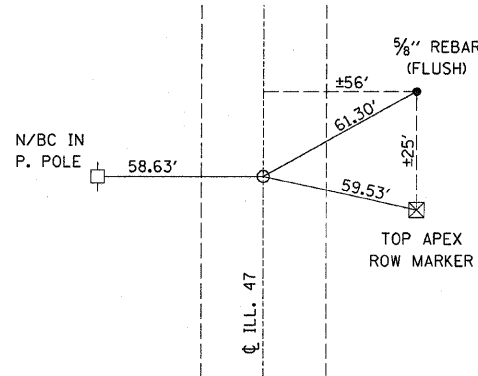
F.A.P. RTE.	SECTION	COUNTY	TOTAL SHEETS	SHEET NO.
326	(118,119) RS-4	GRUNDY	28	21
STA.		TO STA.		
FED. ROAD DIST. NO.		ILLINOIS FED. AID PROJECT		



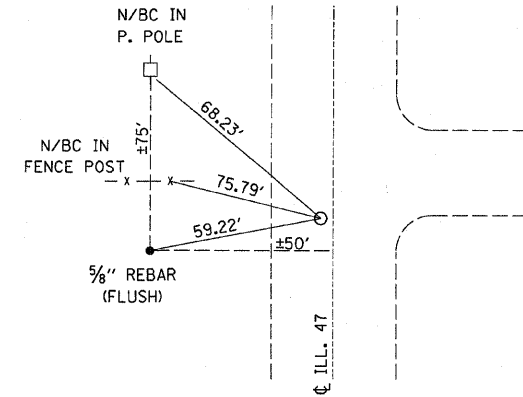
FOUND BRASS DISK ON  $\phi$  ILL. 47  
STA. 389+94.86  $\phi$  P.T.



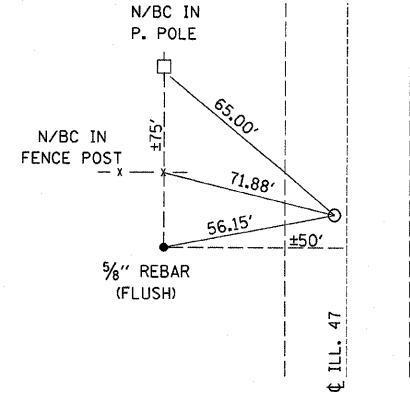
FOUND BRASS DISK ON  $\phi$  ILL. 47  
STA. 310+74.91  $\phi$  P.T.



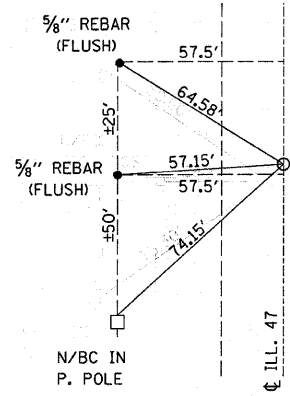
FOUND BRASS DISK ON  $\phi$  ILL. 47  
STA. 432+74.77  $\phi$  P.C.



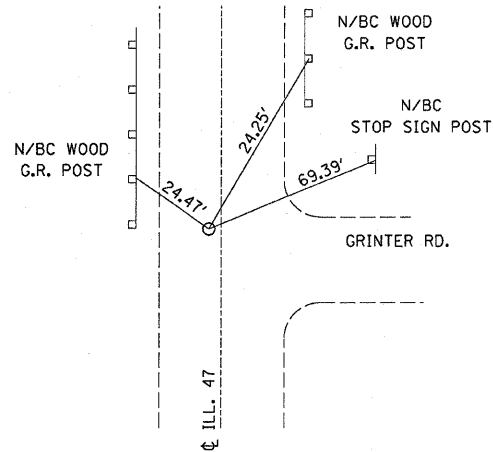
FOUND BRASS DISK  
 $\pm 2.50'$  W. OF  $\phi$  ILL. 47



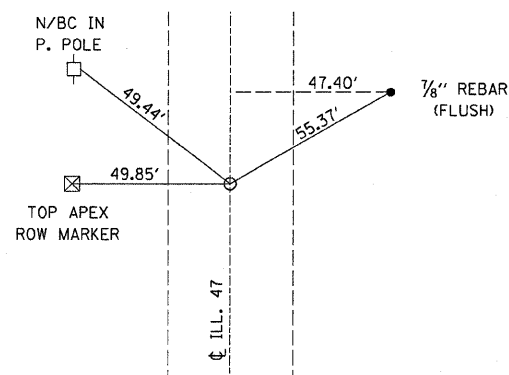
FOUND BRASS DISK  
 $\pm 6.0'$  W. OF  $\phi$  ILL. 47  
SW COR. SEC 34 T32N R7E



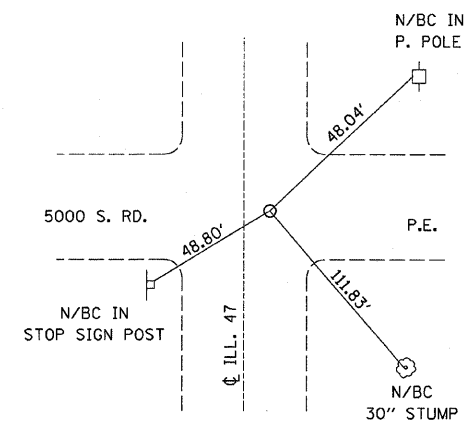
FOUND BRASS DISK ON  $\phi$  ILL. 47  
STA. 442+74.77  $\phi$  P.T.



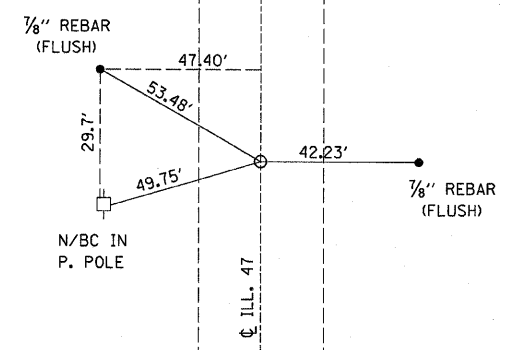
FOUND BRASS DISK  
0.56' W OF  $\phi$  ILL. 47  
STA. 464+56.30  
E 1/4 COR. SEC. 33 T32N R7E



FOUND BRASS DISK ON  $\phi$  ILL. 47  
STA. 486+14.78  $\phi$  P.C.



FOUND BRASS DISK  
6.74' W OF  $\phi$  ILL. 47  
STA. 491+05.02  
NE COR. SEC. 33 T32N R7E



FOUND BRASS DISK ON  $\phi$  ILL. 47  
STA. 486+14.78  $\phi$  P.C.

\* DATE - TIME \*  
C:\pwworking\dw\1001\braboypc\d0116918\defal1.s.dgn