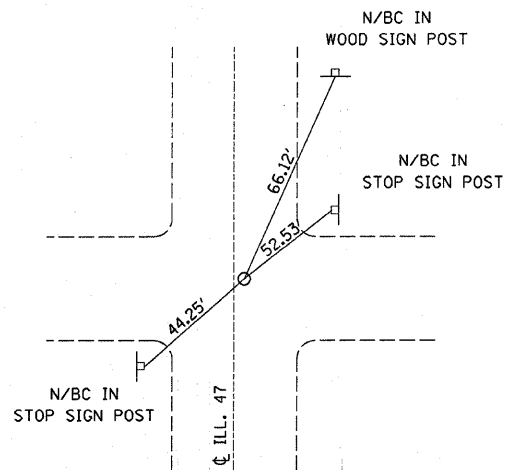
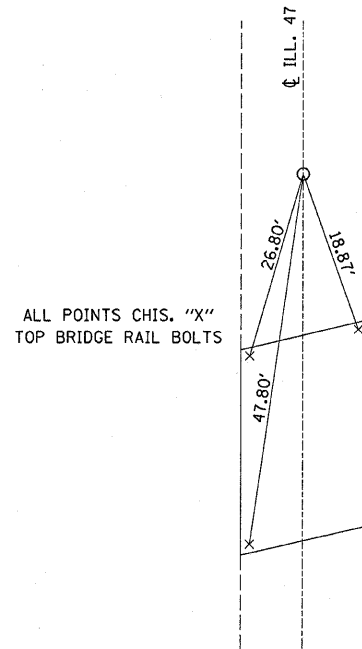


F.A.P. RTE.	SECTION	COUNTY	TOTAL SHEETS	SHEET NO.
326	(118,119) RS-4	GRUNDY	28	23
STA.		TO STA.		
FED. ROAD DIST. NO.		ILLINOIS FED. AID PROJECT		

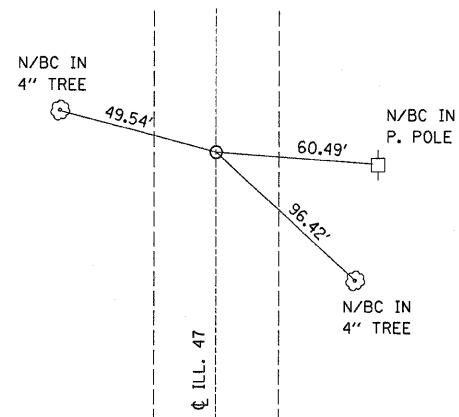


FOUND BRASS DISK
0.3' E OF C ILL. 47
STA. 703+01.66
E 1/4 COR. SEC. 9 T32N R7E

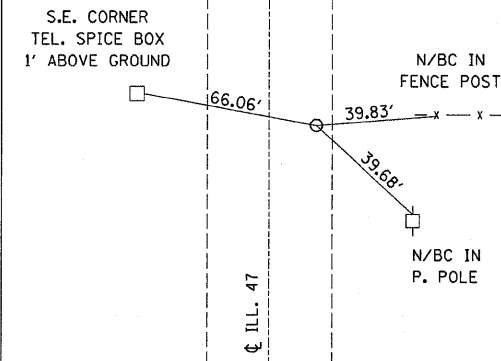


ALL POINTS CHIS. "X"
TOP BRIDGE RAIL BOLTS

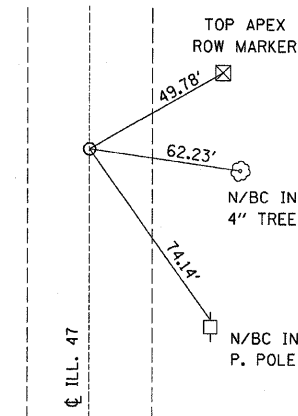
FOUND BRASS DISK ON C ILL. 47
STA. 706+14.83 C P.T.



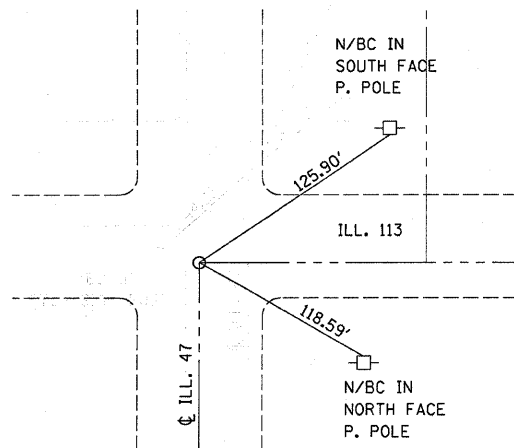
FOUND BRASS DISK ON C ILL. 47
STA. 725+74.80 C P.C.



FOUND BRASS DISK
 \pm 10.1' E OF C ILL. 47
STA. 729+40.73
E 1/4 COR. SEC. 4 T32N R7E



FOUND BRASS DISK ON C ILL. 47
STA. 735+74.79 C P.T.



FOUND BRASS DISK
NW COR. SEC. 3 T32N R7E

DATE-TIME
c:\pw\work\pw\tdof\braboy\pc\0116918\der\atl is.dgn