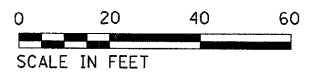
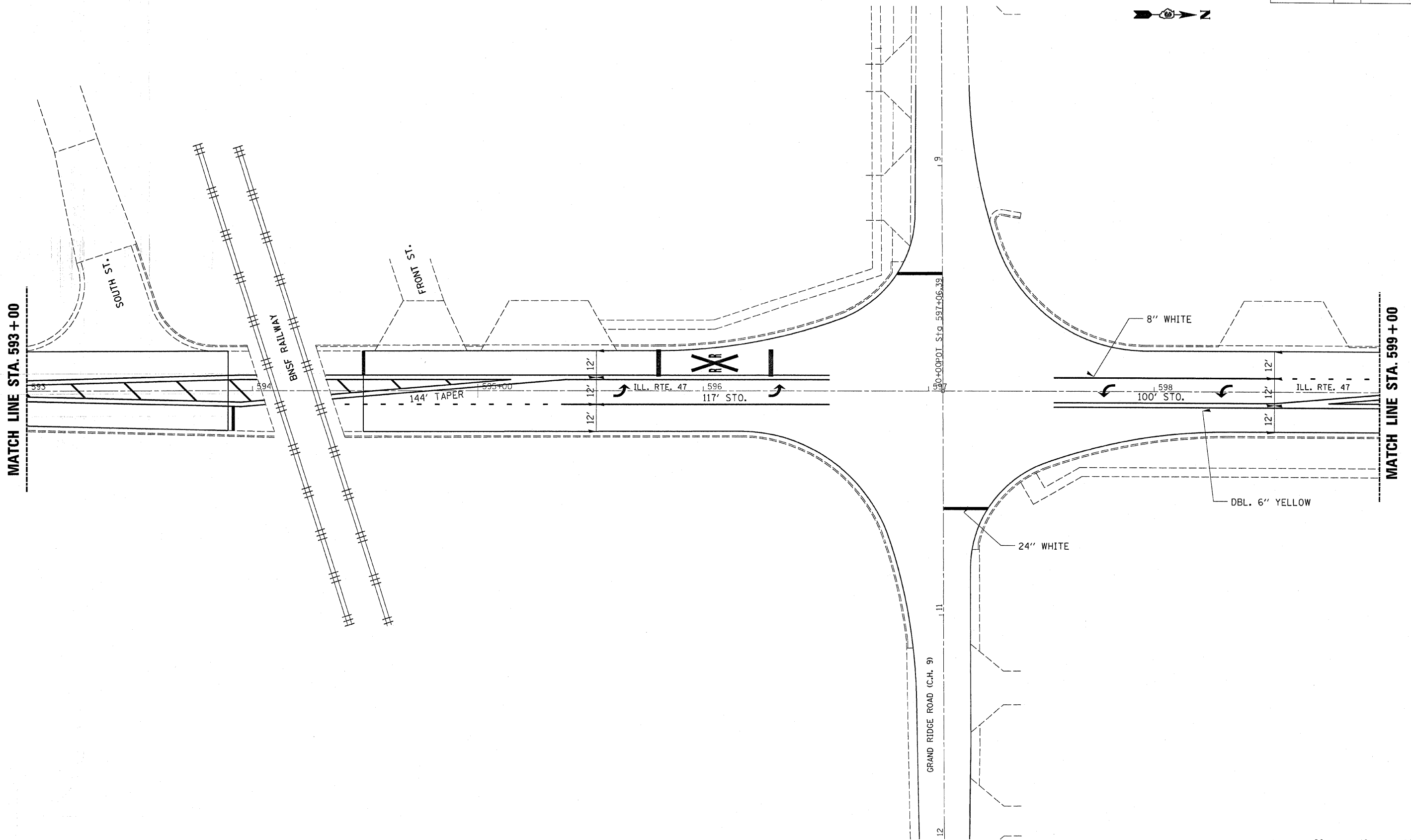
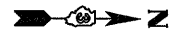


F.A.P. RTE.	SECTION	COUNTY	TOTAL SHEETS	SHEET NO.
326	(118,119) RS-4	GRUNDY	28	27
STA.		TO STA.		
FED. ROAD DIST. NO.	ILLINOIS	FED. AID PROJECT		



JAN. 14, 2005  
ed02504\topo.dgn

**PAVEMENT MARKING ILL. 47 & C.H. 9  
STA. 594+00 TO STA. 600+00**