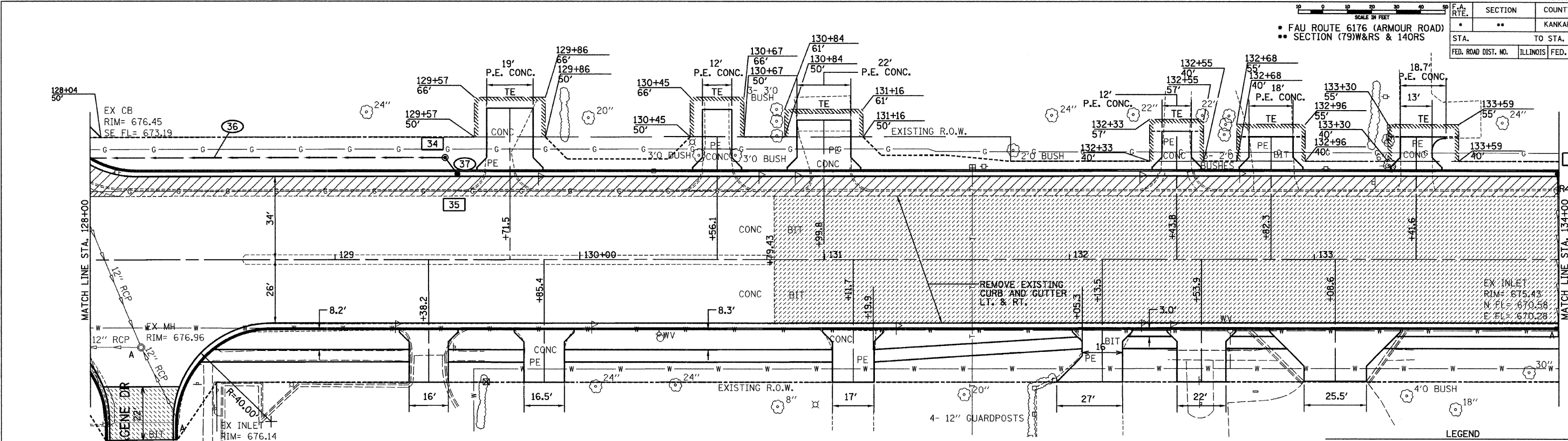


FAU ROUTE 6176 (ARMOUR ROAD)  
SECTION (79)W&RS & 140RS

F.A. RTE.	SECTION	COUNTY	TOTAL SHEETS	SHEET NO.
*	**	KANKAKEE	109	22
STA. TO STA.		ILLINOIS FED. AID PROJECT		

DATE	BY	REVISION
02/03	JAC	AS NOTED
02/03	JAC	AS NOTED
02/03	JAC	AS NOTED

DATE	BY	REVISION
02/03	JAC	AS NOTED
02/03	JAC	AS NOTED
02/03	JAC	AS NOTED

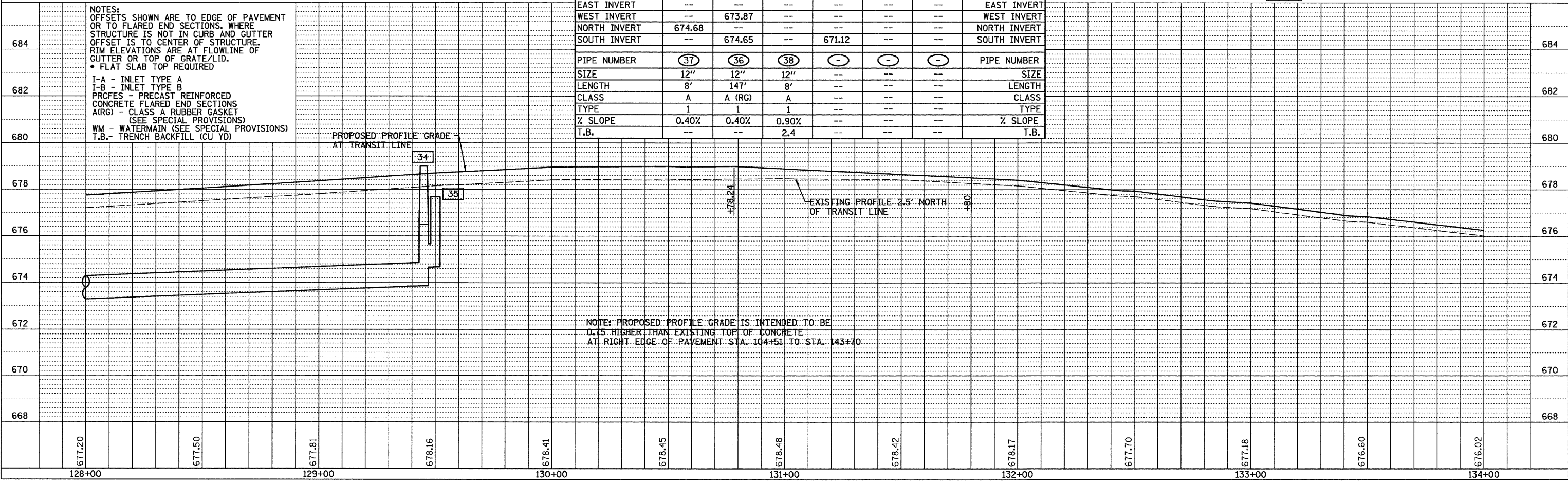


BENCHMARK "S"  
RAILROAD SPIKE IN POWER POLE AT S.W.  
CORNER OF ARMOUR ROAD AND TOMAGENE DRIVE  
ELEV. 677.44

STRUCTURE NO.	35	34	36	37	-	-	STRUCTURE NO.
STA	129+50.0	129+45.0	NOT	134+00.0	--	--	STA
OFFSET	34.0 LT	41.6 LT	USED	34.0 LT	--	--	OFFSET
STRUCTURE TYPE	CB-C	MH TA 4	--	CB-C	--	--	STRUCTURE TYPE
F&G TYPE	3	1 CL	--	3	--	--	F&G TYPE
RIM ELEVATION	677.82	679.00	--	675.43	--	--	RIM ELEVATION
EAST INVERT	--	--	--	--	--	--	EAST INVERT
WEST INVERT	--	673.87	--	--	--	--	WEST INVERT
NORTH INVERT	674.68	--	--	--	--	--	NORTH INVERT
SOUTH INVERT	--	674.65	--	671.12	--	--	SOUTH INVERT
PIPE NUMBER	37	36	38	-	-	-	PIPE NUMBER
SIZE	12"	12"	12"	--	--	--	SIZE
LENGTH	8'	147'	8'	--	--	--	LENGTH
CLASS	A	A (RG)	A	--	--	--	CLASS
TYPE	1	1	1	--	--	--	TYPE
% SLOPE	0.40%	0.40%	0.90%	--	--	--	% SLOPE
T.B.	--	--	2.4	--	--	--	T.B.

LEGEND

	HOT-MIX ASPHALT SURFACE REMOVAL COMPLETE
	HOT-MIX ASPHALT SURFACE REMOVAL - BUTT JOINT OR PCC SURFACE REMOVAL - BUTT JOINT
	PAVEMENT REMOVAL
	PAVEMENT WIDENING



NOTE: PROPOSED PROFILE GRADE IS INTENDED TO BE 0.15 HIGHER THAN EXISTING TOP OF CONCRETE AT RIGHT EDGE OF PAVEMENT STA. 104+51 TO STA. 143+70