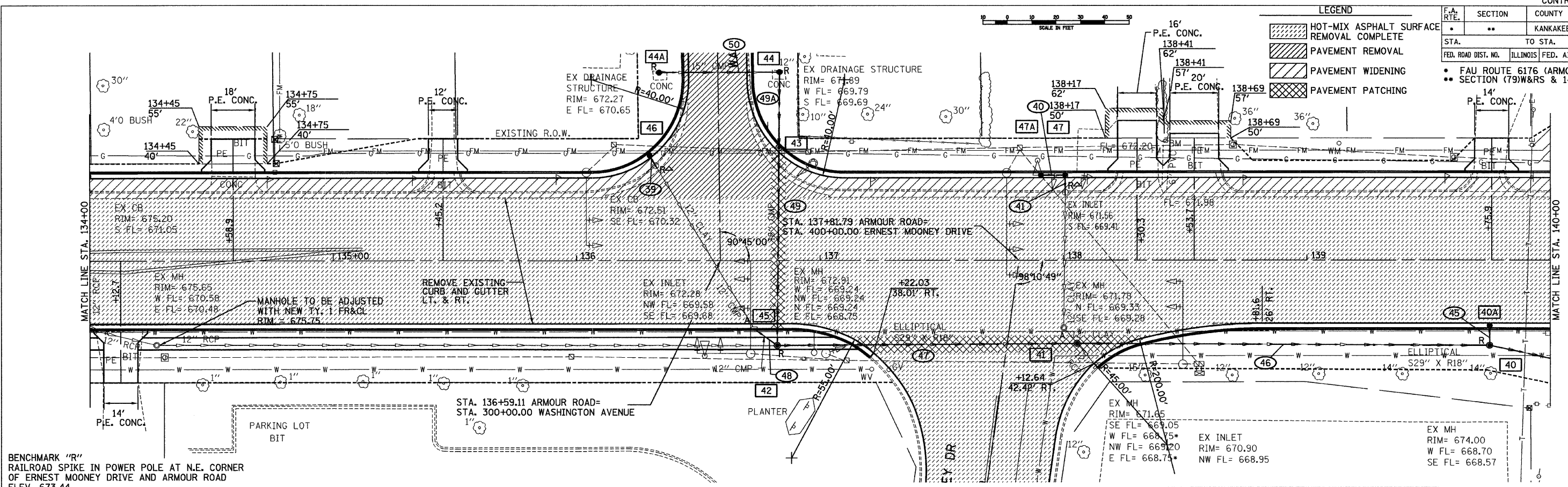


F.A. RTE.	SECTION	COUNTY	TOTAL SHEETS	SHEET NO.
•	••	KANKAKEE	109	23
STA. TO STA.				
FED. ROAD DIST. NO.		ILLINOIS FED. AID PROJECT		
• FAU ROUTE 6176 (ARMOUR ROAD)				
•• SECTION (79)W&RS & 140RS				

DATE	BY	REVISION
10/20/03	CHAMIN	1.00
10/20/03	LAB	1.01
02/03	JAC	1.02
PLAN		
SURVEYED		
ALIGNED		
CHECKED		
DATE FILE NAME		
NO.		

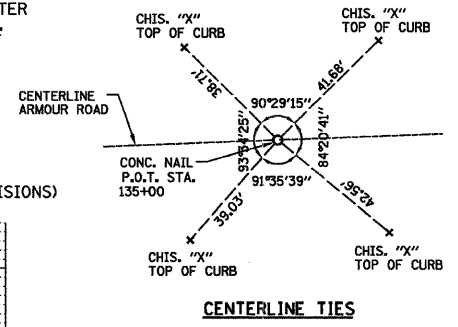
DATE	BY	REVISION
10/20/03	CHAMIN	1.00
10/20/03	LAB	1.01
02/03	JAC	1.02
PROFILE		
SURVEYED		
GRADES CHECKED		
DATE		
NO.		



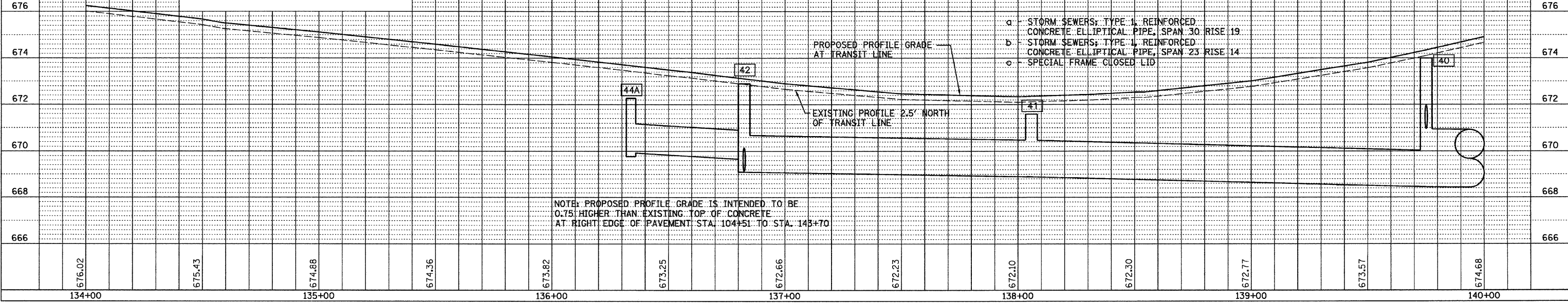
BENCHMARK "R"
RAILROAD SPIKE IN POWER POLE AT N.E. CORNER
OF ERNEST MOONEY DRIVE AND ARMOUR ROAD
ELEV. 673.44

NOTES:
OFFSETS SHOWN ARE TO EDGE OF PAVEMENT
OR TO FLARED END SECTIONS, WHERE
STRUCTURE IS NOT IN CURB AND GUTTER
OFFSET IS TO CENTER OF STRUCTURE.
RIM ELEVATIONS ARE AT FLOWLINE OF
GUTTER OR TOP OF GRATE/LID.
• FLAT SLAB TOP REQUIRED

I-A - INLET TYPE A
I-B - INLET TYPE B
PRCFES - PRECAST REINFORCED
CONCRETE FLARED END SECTIONS
A(RG) - CLASS A RUBBER GASKET
(SEE SPECIAL PROVISIONS)
WM - WATERMAIN (SEE SPECIAL PROVISIONS)
T.B.- TRENCH BACKFILL (CU YD)



STRUCTURE NO.	46	44A	44	43	42	45	40	40A	41	47	47A	49	---	---	STRUCTURE NO.
STA	136+30.6	136+33.9	136+83.5	136+82.3	136+82.5	136+72.9	139+75.1	139+75.1	138+05.8	138+80.8	137+90.8	NOT	---	---	STA
OFFSET	42.4 LT	76.9 LT	77.1 LT	45.3 LT	34.9 RT	26.0 RT	35.1 RT	26.0 RT	34.2 RT	34.0 LT	34.0 LT	USED	---	---	OFFSET
STRUCTURE TYPE	CB-C	CB-C	MH TA 5	MH TA 5	MH TA 6	CB (EXIST)	MH TA 5	CB-C	MH TA 6	CB-C	CB-C	---	---	---	STRUCTURE TYPE
F&G TYPE	3	8	8	3	1 CL	---	1 CL	3V	c	3	3	---	---	---	F&G TYPE
RIM ELEVATION	672.32	672.27	671.89	672.18	---	---	674.00	673.50	671.70	671.44	671.44	---	---	---	RIM ELEVATION
EAST INVERT	---	669.94	---	---	669.10	---	668.45	---	668.89	---	669.44	---	---	---	EAST INVERT
WEST INVERT	---	---	669.64	---	669.24	---	668.45	---	668.89	669.44	---	---	---	---	WEST INVERT
NORTH INVERT	---	---	---	669.50	669.14	669.58	670.97	---	669.20±	---	---	---	---	---	NORTH INVERT
SOUTH INVERT	670.34	---	669.64	669.50	---	669.68	---	670.50	669.05±	669.44	---	---	---	---	SOUTH INVERT
PIPE NUMBER	39	45	46	47	48	49	49A	50	41	40	---	---	---	---	PIPE NUMBER
SIZE	12"	12"	a	a	12"	b	b	15"	12"	12"	---	---	---	---	SIZE
LENGTH	6'	8'	169'	123'	12'	81'	31'	50'	8'	10'	---	---	---	---	LENGTH
CLASS	A	A (RG)	A	A	A (RG)	A (RG)	A (RG)	A	A	A	---	---	---	---	CLASS
TYPE	1	1	1	1	1	1	1	1	1	1	---	---	---	---	TYPE
% SLOPE	0.40%	0.40%	0.26%	0.17%	4.5%	0.45%	0.45%	0.60%	0.40%	0.40%	---	---	---	---	% SLOPE
T.B.	1.1	---	7.4	10.4	---	11.3	---	4.0	1.1	1.3	---	---	---	---	T.B.



NOTE: PROPOSED PROFILE GRADE IS INTENDED TO BE
0.75' HIGHER THAN EXISTING TOP OF CONCRETE
AT RIGHT EDGE OF PAVEMENT STA. 104+51 TO STA. 143+70

- a - STORM SEWERS: TYPE 1, REINFORCED CONCRETE ELLIPTICAL PIPE, SPAN 30' RISE 19
- b - STORM SEWERS: TYPE 1, REINFORCED CONCRETE ELLIPTICAL PIPE, SPAN 23' RISE 14
- c - SPECIAL FRAME CLOSED LID