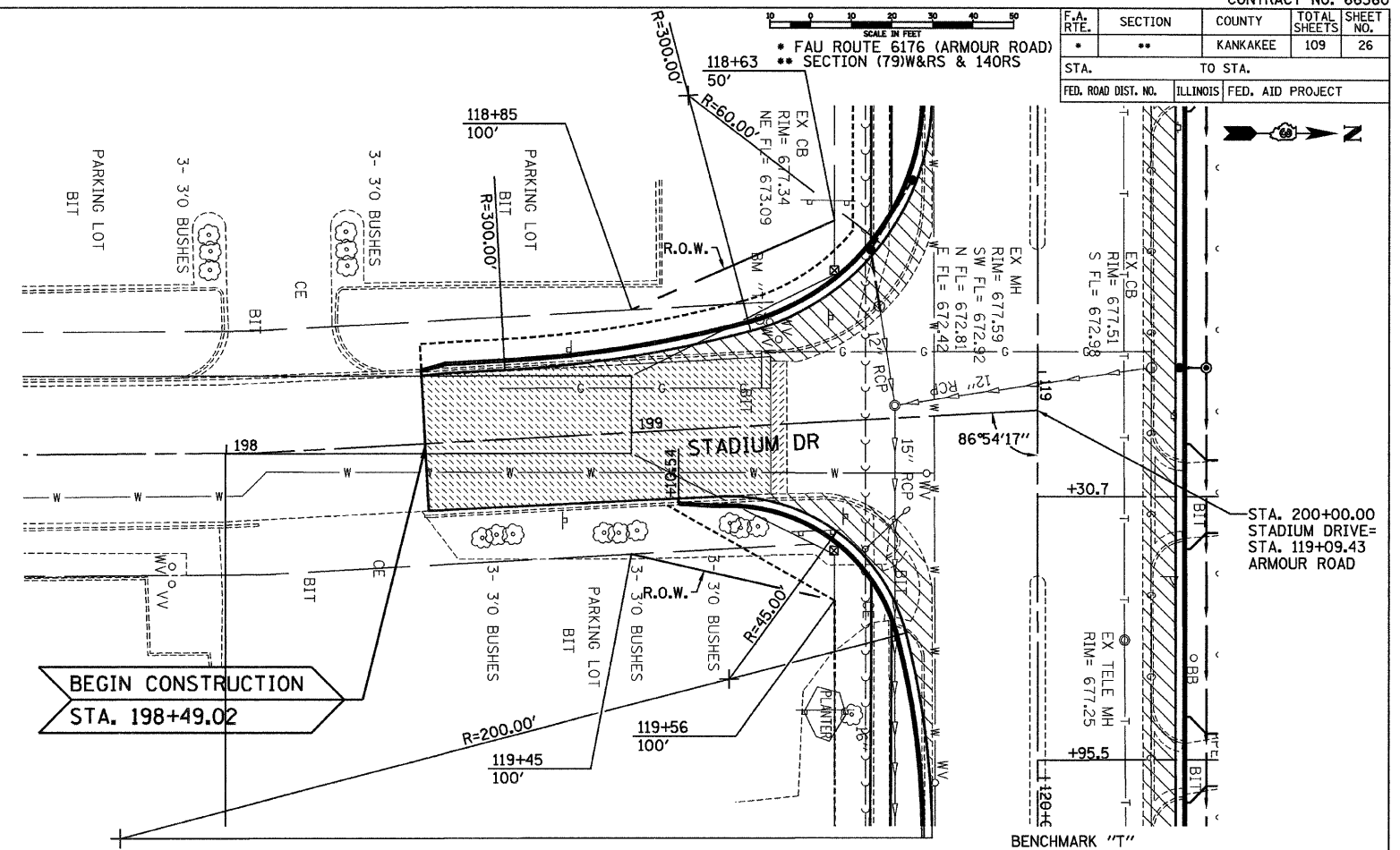


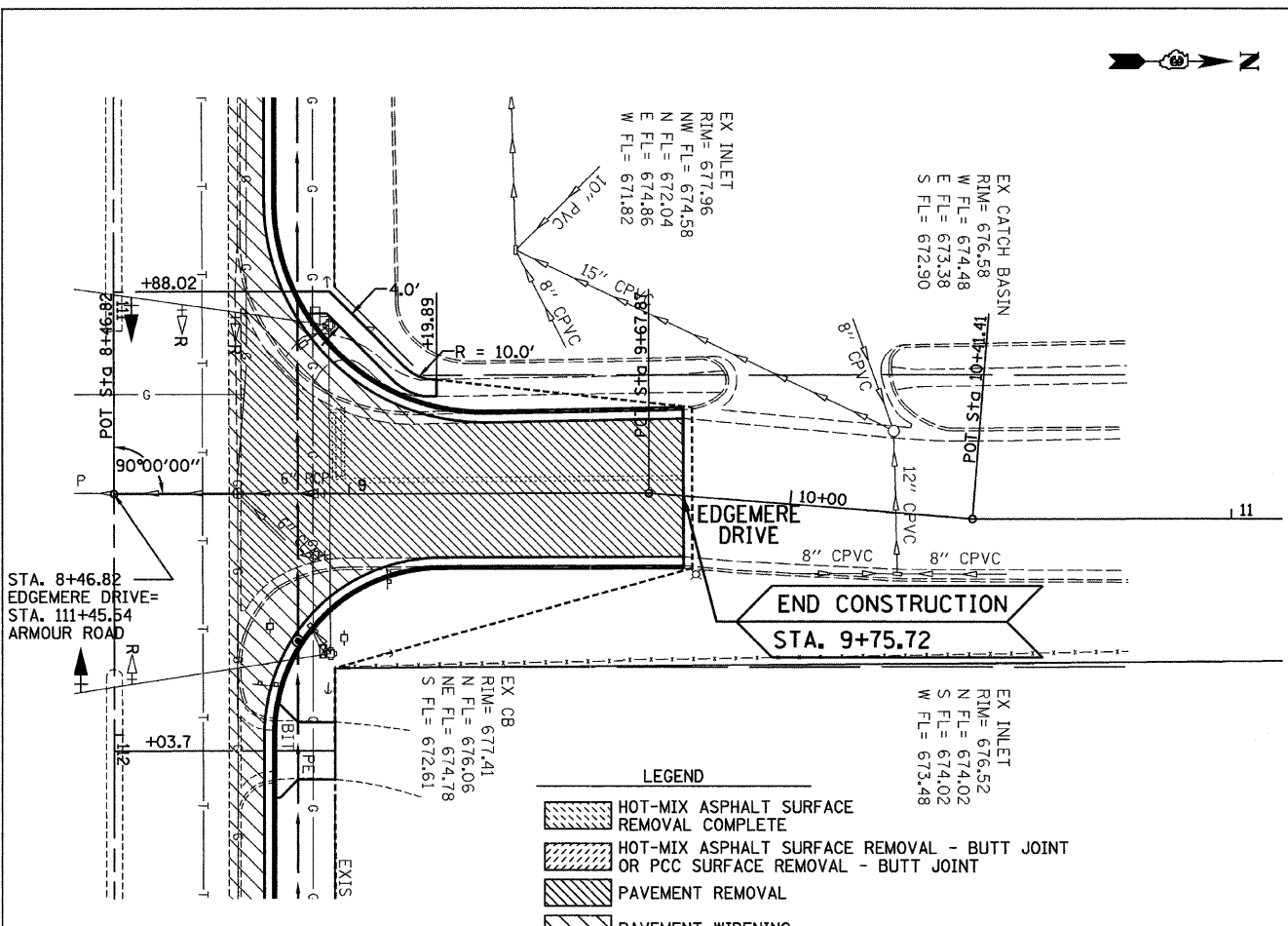
F.A. RTE.	SECTION	COUNTY	TOTAL SHEETS	SHEET NO.
*	**	KANKAKEE	109	26

STA.	TO STA.

FED. ROAD DIST. NO.	ILLINOIS	FED. AID PROJECT

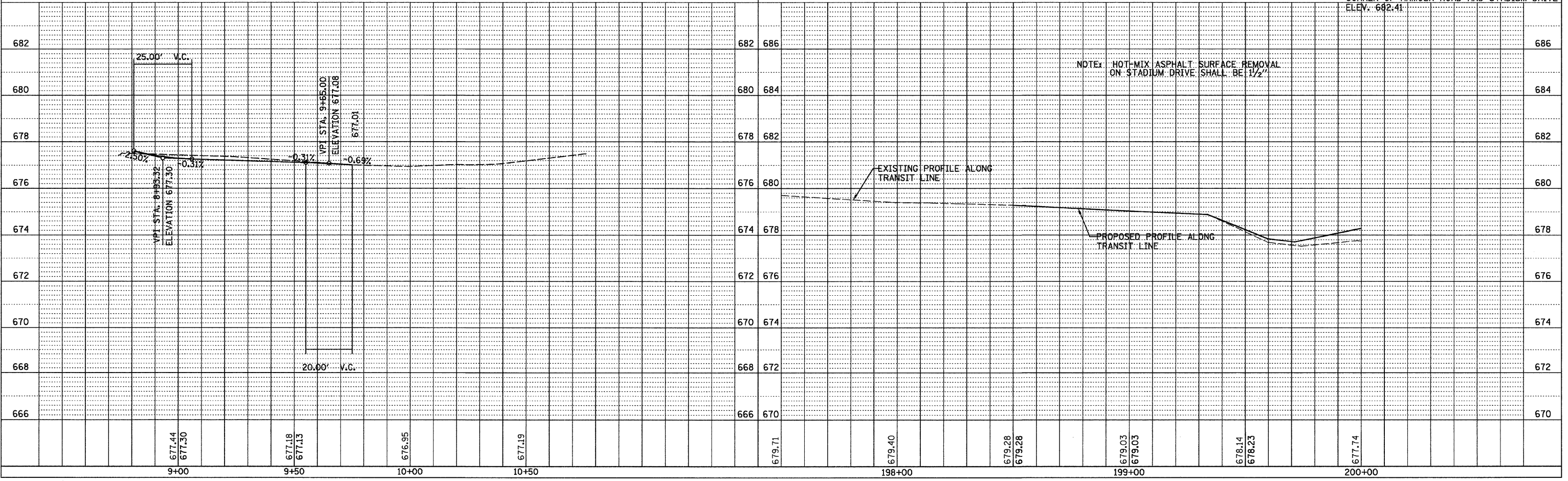


BENCHMARK "T"
TOP OF 5/8 NUT ON FIRE HYDRANT AT S.W.
CORNER OF ARMOUR ROAD AND STADIUM DRIVE
ELEV. 682.41



LEGEND

- HOT-MIX ASPHALT SURFACE REMOVAL COMPLETE
- HOT-MIX ASPHALT SURFACE REMOVAL - BUTT JOINT OR PCC SURFACE REMOVAL - BUTT JOINT
- PAVEMENT REMOVAL
- PAVEMENT WIDENING



PLAN

DATE	BY	CHECKED
02/03	CHAMLIN	JIC

NOTE: ALL DIMENSIONS ARE IN FEET UNLESS OTHERWISE NOTED.

PROFILE

DATE	BY	CHECKED
02/03	CHAMLIN	JIC

NOTE: ALL DIMENSIONS ARE IN FEET UNLESS OTHERWISE NOTED.