

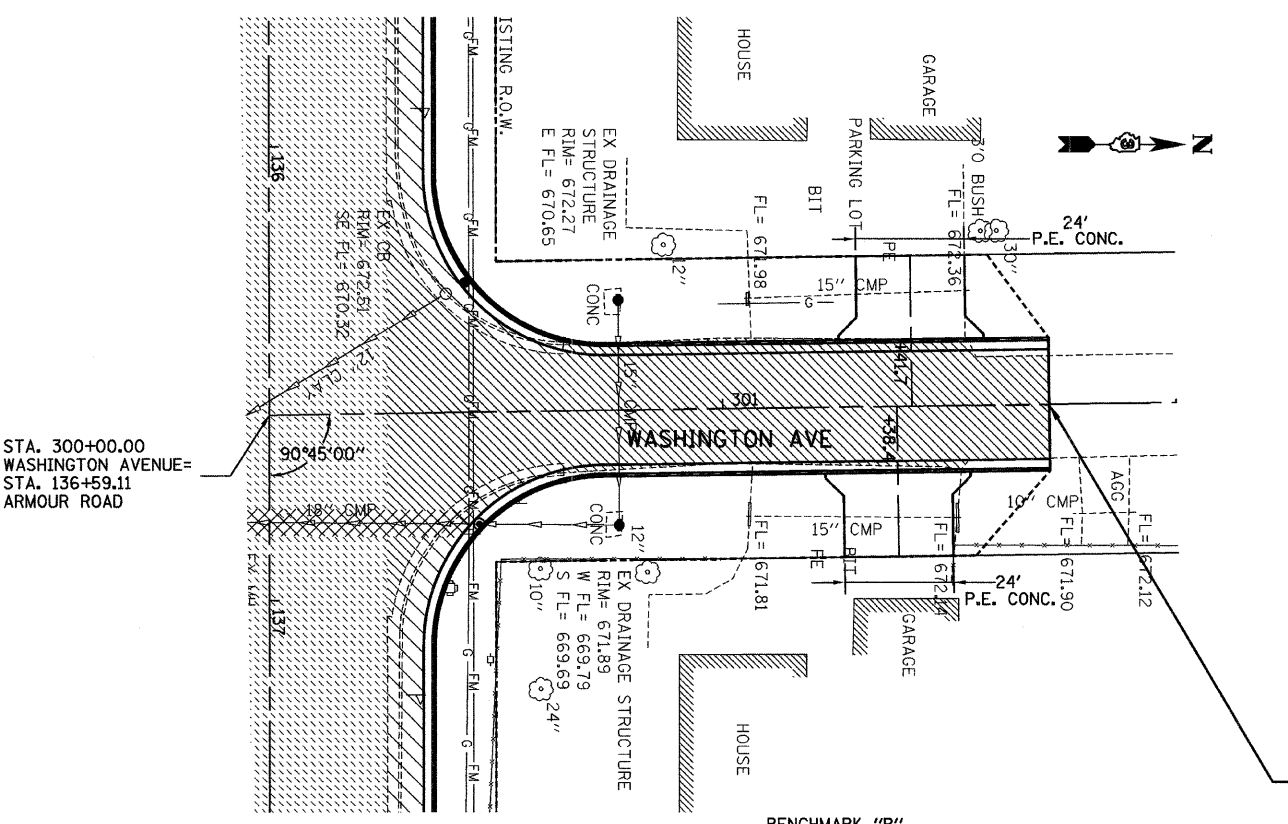
F.A. RTE.	SECTION	COUNTY	TOTAL SHEETS	SHEET NO.
*	**	KANKAKEE	109	27

STA. TO STA.  
 FED. ROAD DIST. NO. ILLINOIS FED. AID PROJECT  
 • FAU ROUTE 6176 (ARMOUR ROAD)  
 • SECTION (79)W&RS & 140RS



**LEGEND**

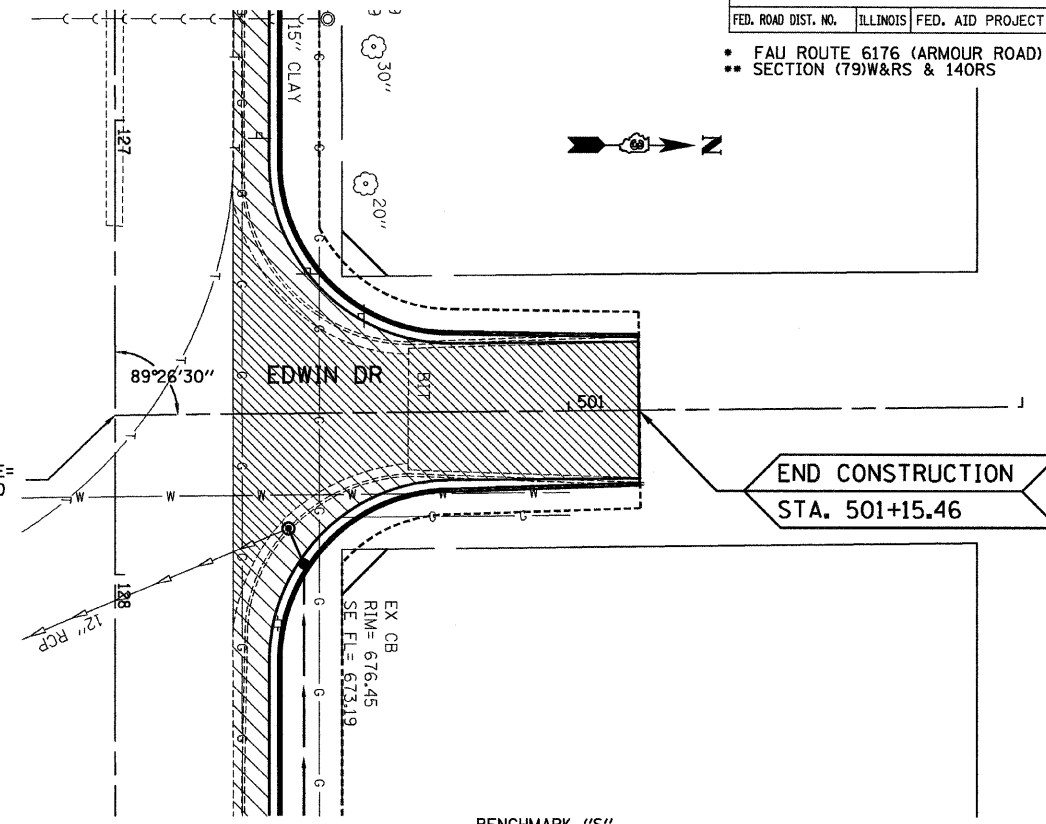
- HOT-MIX ASPHALT SURFACE REMOVAL COMPLETE
- PAVEMENT REMOVAL
- PAVEMENT WIDENING



STA. 300+00.00 WASHINGTON AVENUE= STA. 136+59.11 ARMOUR ROAD

END CONSTRUCTION STA. 301+72.06

BENCHMARK "R"  
 RAILROAD SPIKE IN POWER POLE AT N.E. CORNER OF ERNEST MOONEY DRIVE AND ARMOUR ROAD  
 ELEV. 673.44



STA. 500+00.00 EDWIN DRIVE= STA. 127+64.93 ARMOUR ROAD

END CONSTRUCTION STA. 501+15.46

BENCHMARK "S"  
 RAILROAD SPIKE IN POWER POLE AT S.W. CORNER OF ARMOUR ROAD AND TOMAGENE DRIVE  
 ELEV. 677.44

PLAN

DATE	11/02/03
BY	CHAMLIN
CHECKED	JAC
DATE	11/02/03
BY	CHAMLIN
CHECKED	JAC
DATE	11/02/03
BY	CHAMLIN
CHECKED	JAC
DATE	11/02/03
BY	CHAMLIN
CHECKED	JAC

PROFILE

DATE	11/02/03
BY	CHAMLIN
CHECKED	JAC
DATE	11/02/03
BY	CHAMLIN
CHECKED	JAC
DATE	11/02/03
BY	CHAMLIN
CHECKED	JAC
DATE	11/02/03
BY	CHAMLIN
CHECKED	JAC

