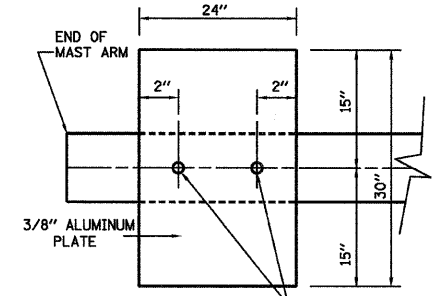


F.A.U. RTE.	SECTION	COUNTY	TOTAL SHEETS	SHEET NO.
*	**	KANKAKEE	109	40

STA. _____ TO STA. _____
 FED. ROAD DIST. NO. _____ ILLINOIS FED. AID PROJECT
 * FAU ROUTE 6176 (ARMOUR ROAD)
 ** SECTION (79)W&RS & 140RS

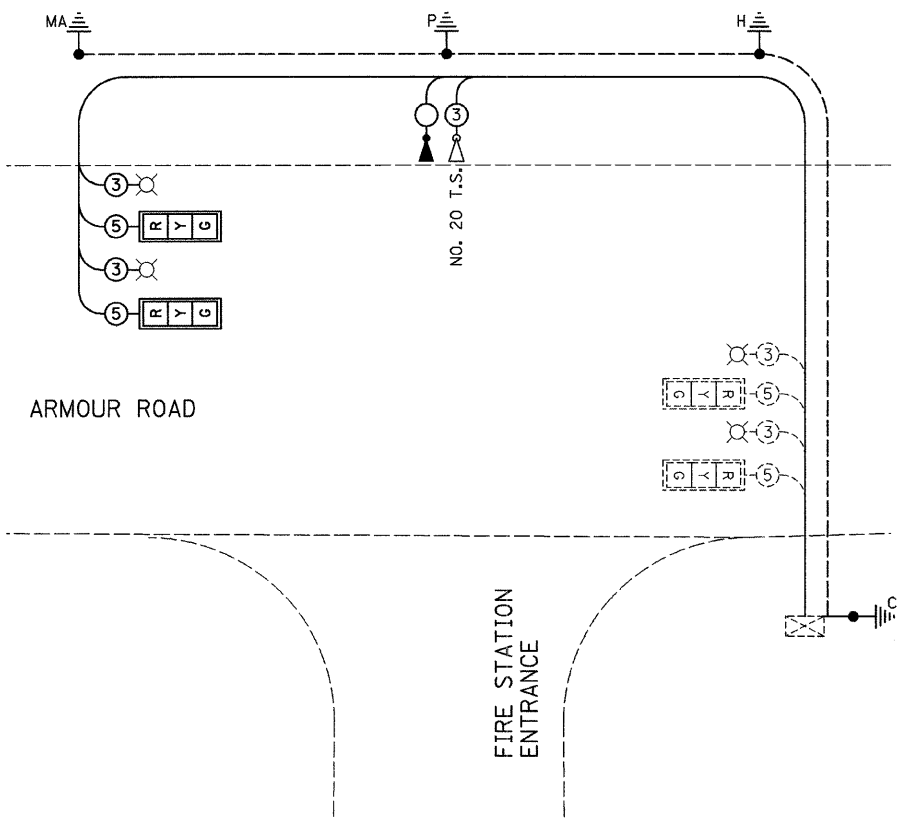
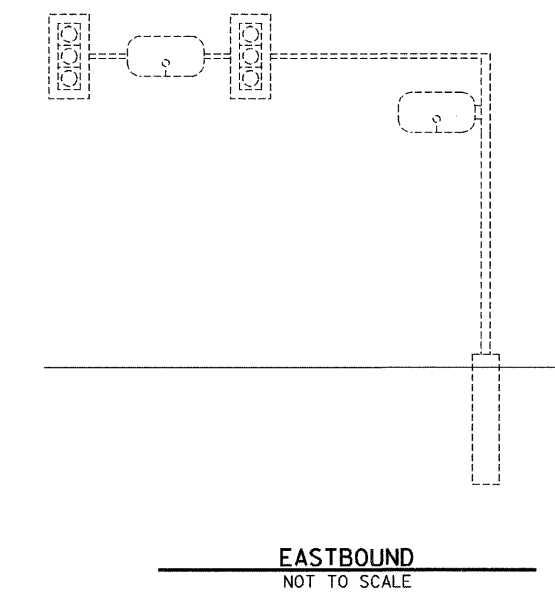
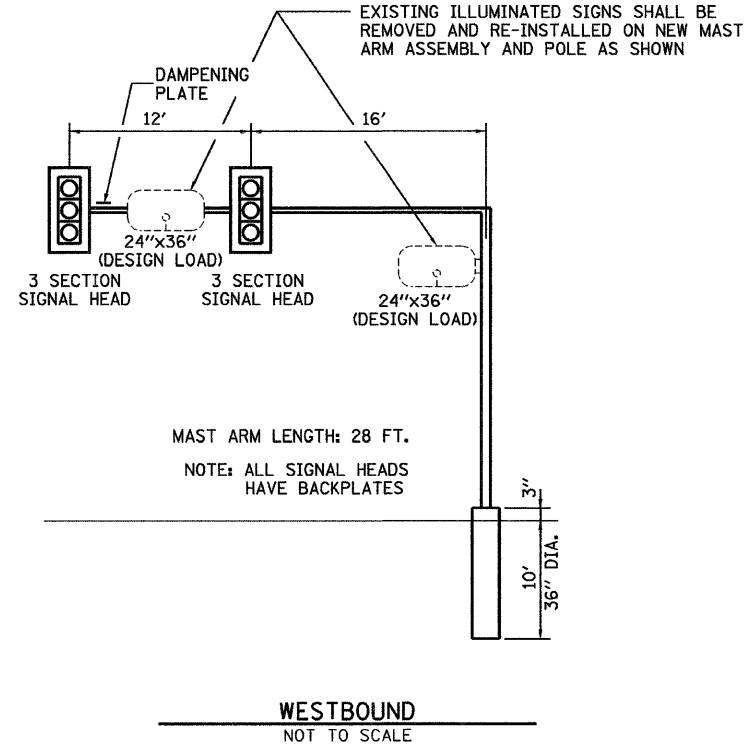
NOTE:

DAMPENING DEVICE SHALL CONSIST OF A 24" X 30" TYPE 1, UNPAINTED ALUMINUM SIGN STOCK MOUNTED HORIZONTALLY ON TOP OF MAST ARM WITH THE 30" LENGTH PERPENDICULAR TO THE ARM. COST OF THE DAMPENING DEVICE IS INCLUDED IN THE MAST ARM PAY ITEM.



2-5/8" STAINLESS STEEL BOLTS THROUGH STAINLESS STEEL BANDING
 NOTE: MOUNT DAMPENING PLATE TO END OF EACH TRAFFIC SIGNAL MAST ARM.

DAMPENING PLATE DETAIL - TOP VIEW



- TRAFFIC SIGNALS LEGEND
- EXISTING CABLE NUMBER
*=-CABLE NUMBER
 - EXISTING SIGNAL SECTION 12"
 - EXISTING SIGN ILLUMINATION (RELOCATED)
 - EXISTING CONTROLLER CABINET
 - EXISTING TRAFFIC SIGNAL BACKPLATE
 - DETNOTES NUMBER OF CONDUCTORS (NEW)
ALL CABLE NO. 14 EXCEPT AS INDICATED
 - SIGNAL SECTION 12"
 - EMERGENCY VEHICLE CONFIRMATION BEACON
 - EMERGENCY VEHICLE LIGHT DETECTOR
 - TRAFFIC SIGNAL BACKPLATE
 - GROUND ROD AT POST (P) OR MAST ARM (MA) OR HANDHOLE (H) OR CONTROLLER (C) OR SERVICE INSTALLATION (S)

PLOT DATE = 12/05
 FILE NAME = Z04307SCABLE.PFD
 USER = ARR

REVISIONS	
NAME	DATE

ILLINOIS DEPARTMENT OF TRANSPORTATION
 TRAFFIC SIGNAL CABLE PLAN
 AND DETAIL PLAN
 FAU ROUTE 6176 (ARMOUR ROAD)
 SECTION (79)W&RS & 140RS
 KANKAKEE COUNTY

VERT. SCALE: 11/05
 HORIZ. SCALE: 11/05

DRAWN BY ARR
 CHECKED BY JLS