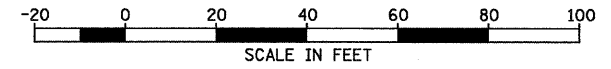


F.A.U. RTE.	SECTION	COUNTY	TOTAL SHEETS	SHEET NO.
*	**	KANKAKEE	109	42

STA. \_\_\_\_\_ TO STA. \_\_\_\_\_  
 FED. ROAD DIST. NO. \_\_\_\_\_ ILLINOIS FED. AID PROJECT  
 \* FAU ROUTE 6176 (ARMOUR ROAD)  
 \*\* SECTION (79)W&RS & 140RS

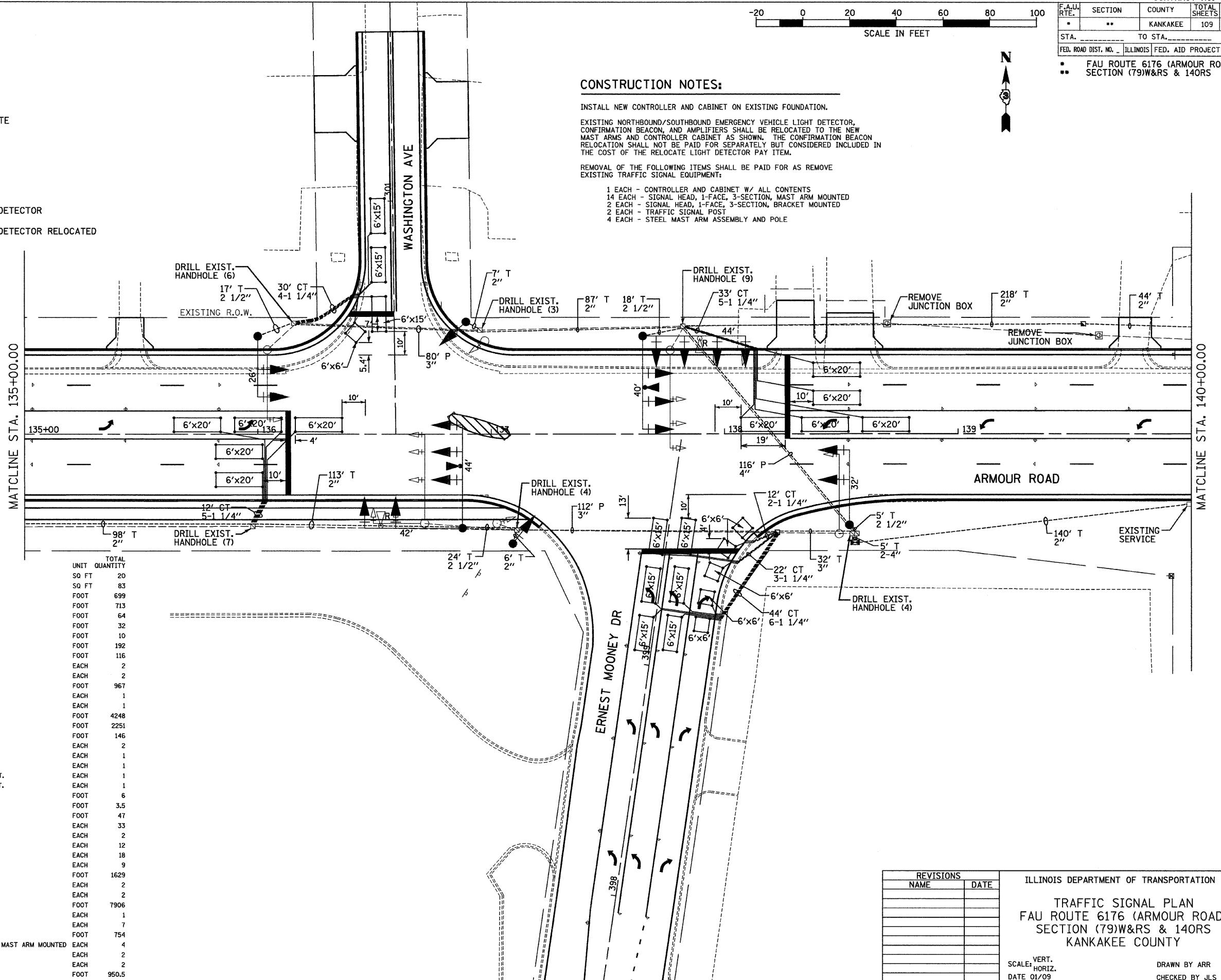


**TRAFFIC SIGNALS LEGEND**

EXISTING	PROPOSED	
⊕	⊕	SERVICE INSTALLATION
⊗	⊗	CONTROLLER CABINET
---	---	CONDUIT
↑	↑	SIGNAL HEAD WITH BACKPLATE
○	○	STEEL MAST ARM
○	○	TRAFFIC SIGNAL POST
⊠	⊠	HANDHOLE
⊠	⊠	DOUBLE HANDHOLE
△	△	EMERGENCY VEHICLE LIGHT DETECTOR
△ R	△ R	EMERGENCY VEHICLE LIGHT DETECTOR RELOCATED

**CONSTRUCTION NOTES:**

- INSTALL NEW CONTROLLER AND CABINET ON EXISTING FOUNDATION.
- EXISTING NORTHBOUND/SOUTHBOUND EMERGENCY VEHICLE LIGHT DETECTOR, CONFIRMATION BEACON, AND AMPLIFIERS SHALL BE RELOCATED TO THE NEW MAST ARMS AND CONTROLLER CABINET AS SHOWN. THE CONFIRMATION BEACON RELOCATION SHALL NOT BE PAID FOR SEPARATELY BUT CONSIDERED INCLUDED IN THE COST OF THE RELOCATE LIGHT DETECTOR PAY ITEM.
- REMOVAL OF THE FOLLOWING ITEMS SHALL BE PAID FOR AS REMOVE EXISTING TRAFFIC SIGNAL EQUIPMENT:
  - 1 EACH - CONTROLLER AND CABINET W/ ALL CONTENTS
  - 14 EACH - SIGNAL HEAD, 1-FACE, 3-SECTION, MAST ARM MOUNTED
  - 2 EACH - SIGNAL HEAD, 1-FACE, 3-SECTION, BRACKET MOUNTED
  - 2 EACH - TRAFFIC SIGNAL POST
  - 4 EACH - STEEL MAST ARM ASSEMBLY AND POLE



**SCHEDULE OF QUANTITIES**

ITEM NO.	DESCRIPTION	UNIT	TOTAL QUANTITY
72000100	SIGN PANEL - TYPE 1	SO FT	20
72000200	SIGN PANEL - TYPE 2	SO FT	83
81012400	CONDUIT IN TRENCH, 1 1/4" DIA., PVC	FOOT	699
81012600	CONDUIT IN TRENCH, 2" DIA., PVC	FOOT	713
81012700	CONDUIT IN TRENCH, 2 1/2" DIA., PVC	FOOT	64
81012800	CONDUIT IN TRENCH, 3" DIA., PVC	FOOT	32
81013000	CONDUIT IN TRENCH, 4" DIA., PVC	FOOT	10
81021350	CONDUIT PUSHED, 3" DIA., PVC	FOOT	192
81021370	CONDUIT PUSHED, 4" DIA., PVC	FOOT	116
81306500	REMOVE EXISTING JUNCTION BOX	EACH	2
81400700	HANDHOLE, PORTLAND CEMENT CONCRETE	EACH	2
81900200	TRENCH AND BACKFILL FOR ELECTRICAL WORK	FOOT	967
85700205	FULL-ACTUATED CONTROLLER AND TYPE IV CABINET, SPECIAL	EACH	1
86200300	UNINTERRUPTABLE POWER SUPPLY, EXTENDED	EACH	1
87301245	ELECTRIC CABLE IN CONDUIT, SIGNAL NO. 14 5C	FOOT	4248
87301305	ELECTRIC CABLE IN CONDUIT, LEAD-IN, NO. 14 1 PAIR	FOOT	2251
87301805	ELECTRIC CABLE IN CONDUIT, SERVICE, NO. 6 2C	FOOT	146
87501200	TRAFFIC SIGNAL POST, 16 FT.	EACH	2
87700170	STEEL MAST ARM ASSEMBLY AND POLE, 26 FT.	EACH	1
87700200	STEEL MAST ARM ASSEMBLY AND POLE, 32 FT.	EACH	1
87702630	STEEL MAST ARM ASSEMBLY AND POLE WITH DUAL MAST ARMS, 40 FT. AND 44 FT.	EACH	1
87702690	STEEL MAST ARM ASSEMBLY AND POLE WITH DUAL MAST ARMS, 44 FT. AND 42 FT.	EACH	1
87800100	CONCRETE FOUNDATION, TYPE A	FOOT	6
87800150	CONCRETE FOUNDATION, TYPE C	FOOT	3.5
87800415	CONCRETE FOUNDATION, TYPE E, 36 INCH DIAMETER	FOOT	47
87900200	DRILL EXISTING HANDHOLE	EACH	33
88040070	SIGNAL HEAD, POLYCARBONATE, LED, 1-FACE, 3-SECTION, BRACKET MOUNTED	EACH	2
88040090	SIGNAL HEAD, POLYCARBONATE, LED, 1-FACE, 3-SECTION, MAST ARM MOUNTED	EACH	12
88200410	TRAFFIC SIGNAL BACKPLATE, LOUVERED, FORMED PLASTIC	EACH	18
88500100	INDUCTIVE LOOP DETECTOR	EACH	9
88600100	DETECTOR LOOP, TYPE 1	FOOT	1629
88700200	LIGHT DETECTOR	EACH	2
88700300	LIGHT DETECTOR AMPLIFIER	EACH	2
89502300	REMOVE ELECTRIC CABLE FROM CONDUIT	FOOT	7906
89502375	REMOVE EXISTING TRAFFIC SIGNAL EQUIPMENT	EACH	1
89502385	REMOVE EXISTING CONCRETE FOUNDATION	EACH	7
X8730027	ELECTRIC CABLE IN CONDUIT, GROUNDING, NO. 6 1C	FOOT	754
X88008020	OPTICALLY PROGRAMMED SIGNAL HEAD, POLYCARBONATE, LED, 1-FACE, 3-SECTION, MAST ARM MOUNTED	EACH	4
X8950115	RELOCATE LIGHT DETECTOR	EACH	2
X8950120	RELOCATE LIGHT DETECTOR AMPLIFIER	EACH	2
XX002179	ELECTRIC CABLE IN CONDUIT, COMMUNICATION #20 3/C	FOOT	950.5

PLOT DATE = 12/06  
 FILE NAME = Z:\43857\SP1\WASH.DGN  
 USER NAME = ARR

REVISIONS	
NAME	DATE

ILLINOIS DEPARTMENT OF TRANSPORTATION  
 TRAFFIC SIGNAL PLAN  
 FAU ROUTE 6176 (ARMOUR ROAD)  
 SECTION (79)W&RS & 140RS  
 KANKAKEE COUNTY  
 SCALE: VERT. \_\_\_\_\_  
 HORIZ. \_\_\_\_\_  
 DATE 01/09  
 DRAWN BY ARR  
 CHECKED BY JLS