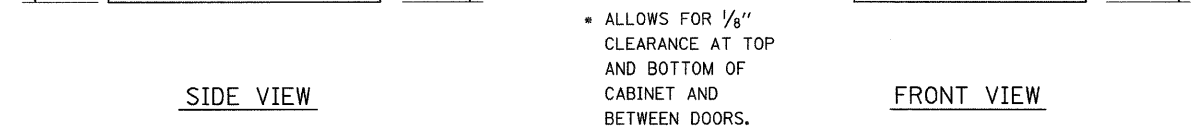
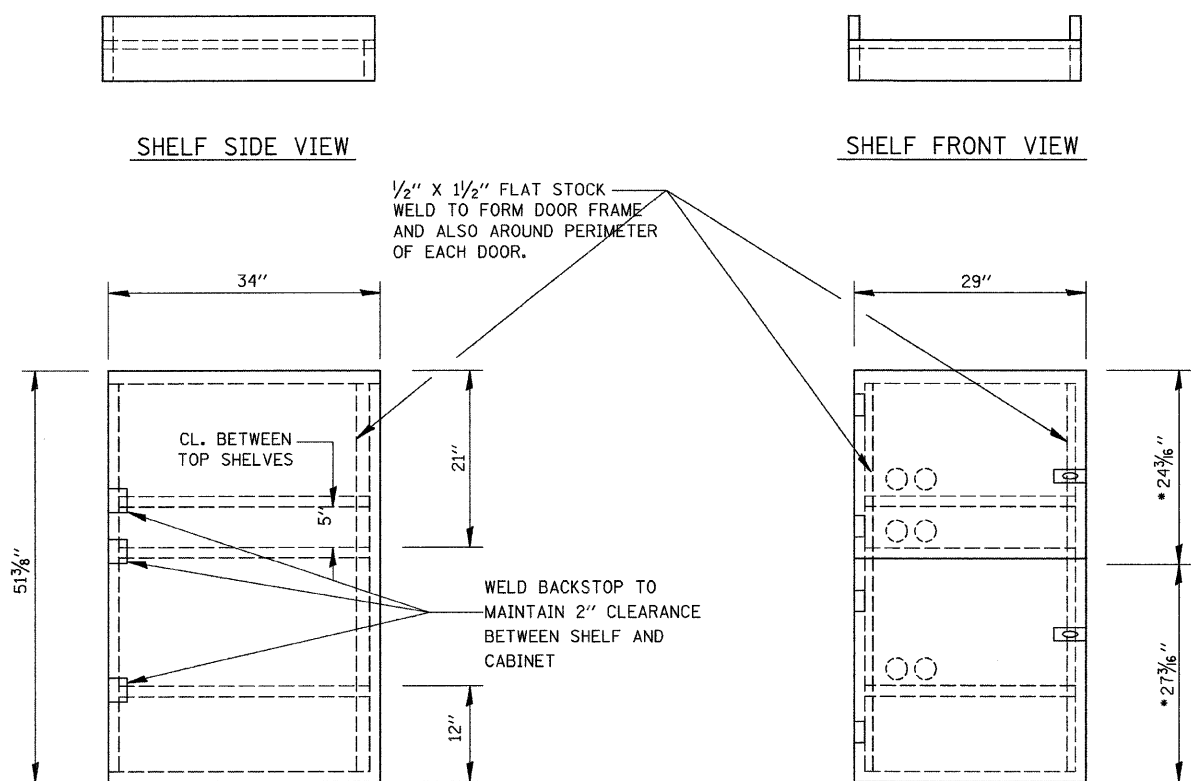


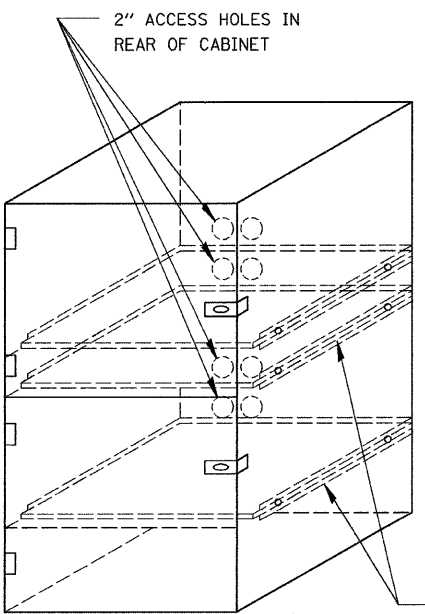
F.A.U. RTE.	SECTION	COUNTY	TOTAL SHEETS	SHEET NO.
*	**	KANKAKEE	109	65

STA. _____ TO STA. _____
 FED. ROAD DIST. NO. _____ ILLINOIS FED. AID PROJECT

* FAU ROUTE 6176 (ARMOUR ROAD)
 ** SECTION (79)W&RS & 140RS



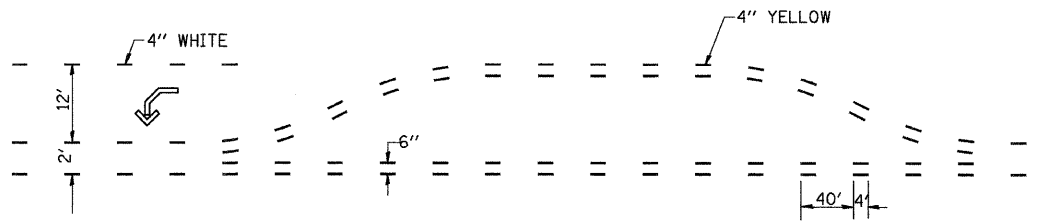
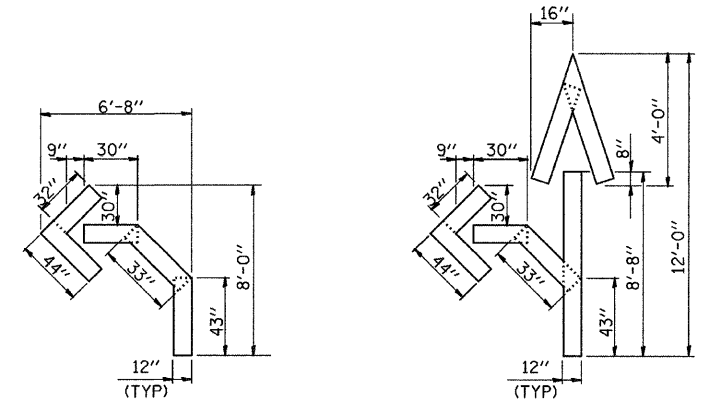
- NOTES:**
1. USE 16 GAUGE STEEL FOR CABINET.
 2. THE TOP SHELF SHALL SLIDE IN OR OUT WITH THE TOP DOOR OPEN.
 3. ALL HINGES AND HASPS WILL BE WELDED TO THE CABINET.
 4. ALL EDGES SHALL BE GROUND SMOOTH.
 5. TWO (2" DIA.) ACCESS HOLES WILL BE REQUIRED FOR EACH SHELF.
 6. CABINET SHALL BE PAINTED WITH TWO COATS OF FLAT PAINT.
 7. 2 EACH MATCHING KEY PADLOCKS, WITH 3 KEYS PROVIDED, MASTER MODEL 3 T OR EQUIVALENT.
 8. 4 EACH PLAIN STEEL, NON-REMOVABLE PIN, NO HOLE 4"x4" SQUARE CORNER HINGES TO BE WELDED ON.
 9. 2 EACH EXTRA HEAVY, PLAIN STEEL, FIXED STAPLE, NO HOLE, 7 1/4" HASPS TO BE WELDED ON.



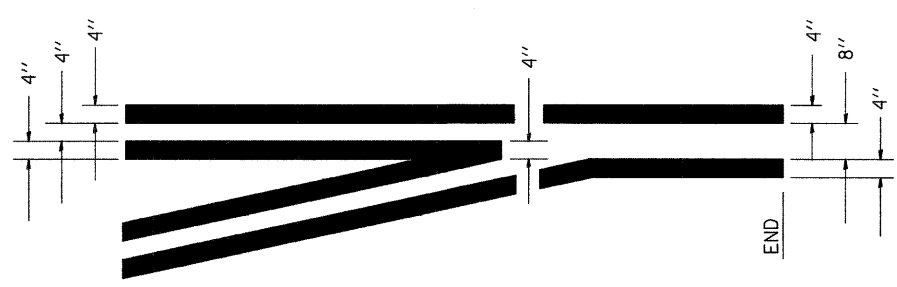
FLAT STOCK DIMENSIONS VARY DEPENDING ON TYPE OF ROLLER ASSEMBLY.

LOCKABLE COMPUTER CABINET

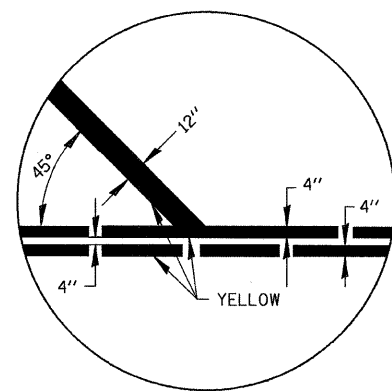
PLOT DATE = 12/86
 FILE NAME = Z04585PL1.DGN
 USER = ARR



SHORT-TERM PAVEMENT MARKING FOR MEDIANS AND ARROWS



TYPICAL APPLICATION @ LEFT TURN LANES



REVISIONS	
NAME	DATE

ILLINOIS DEPARTMENT OF TRANSPORTATION
 DETAILS
 FAU ROUTE 6176 (ARMOUR ROAD)
 SECTION (79)W&RS & 140RS
 KANKAKEE COUNTY

SCALE: VERT. _____
 HORIZ. _____
 DATE 11/05
 DRAWN BY ARR
 CHECKED BY DLA