

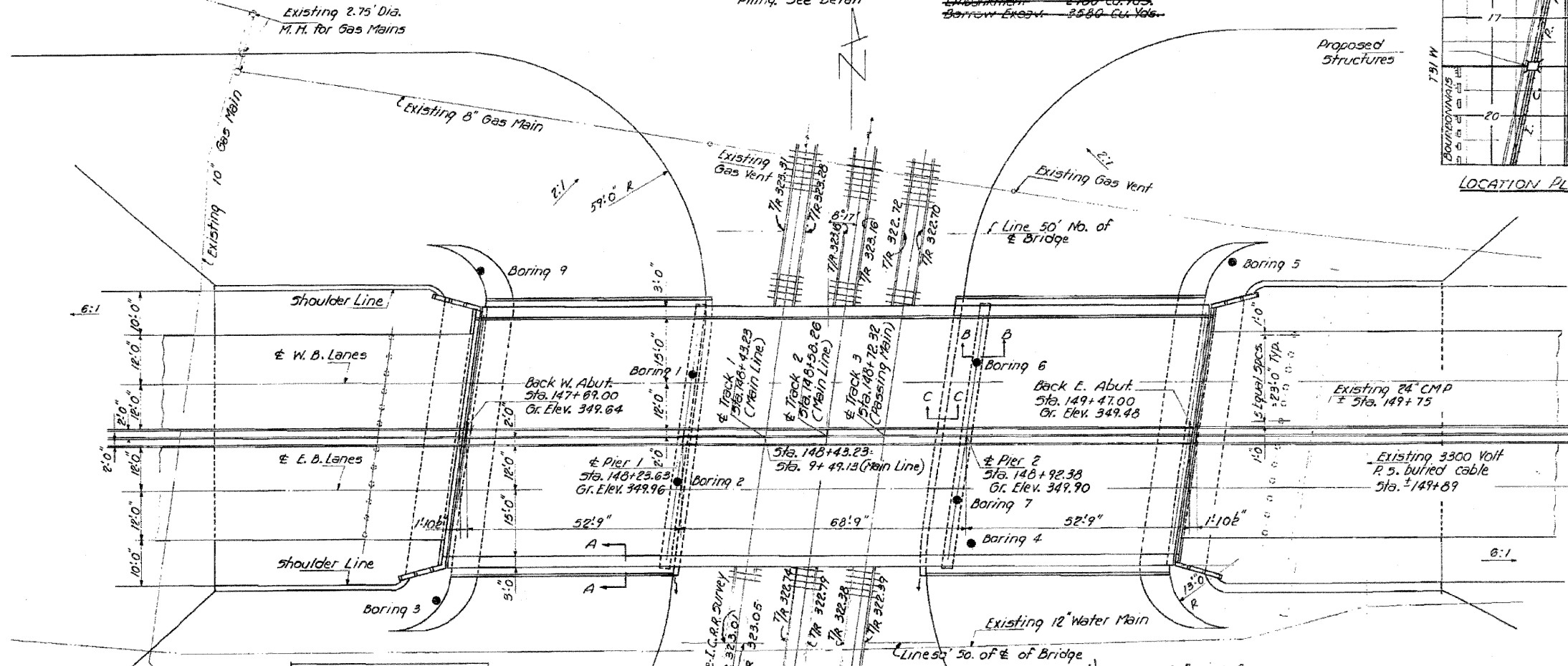
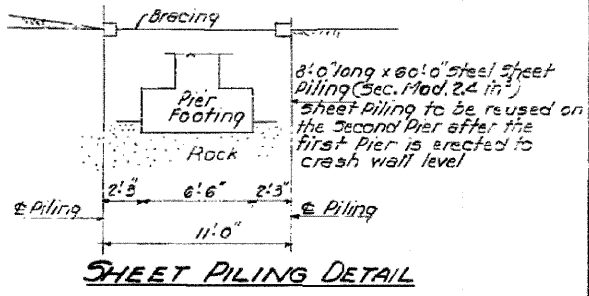
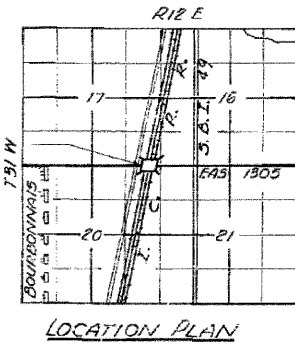
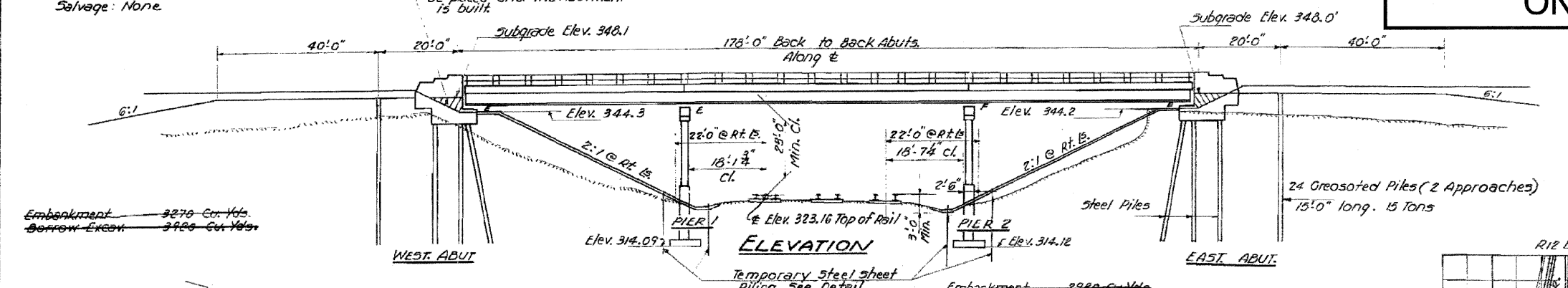
STATE OF ILLINOIS
DEPARTMENT OF PUBLIC WORKS & BUILDINGS
DIVISION OF HIGHWAYS

FOR INFORMATION ONLY

DATE	SECTION	BY	CHKD	REV	SHEET NO.
12-15-35	HR-15	Kankakee	EE	6	8 SHEETS
12-15-35	HR-15	Kankakee	EE	5	

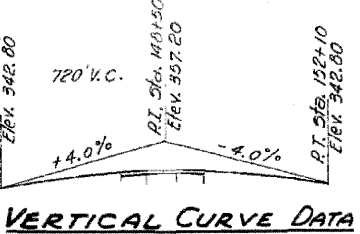
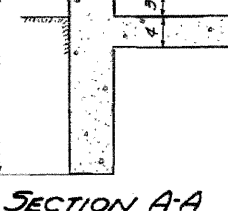
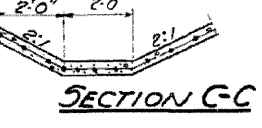
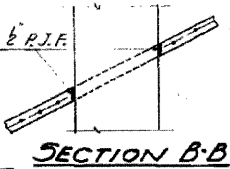
B.M. 5 S. & W. In T.D. 55' Rt.
Sta. 147+50 Elev. 323.88
Existing Structure: 8 Timber Spans
To be removed by Bridge Contractor & 1 Steel Girder Span.
Salvage: None.

GENERAL NOTES
Class-X Concrete shall be used throughout.
Coarse aggregate which is to be used in parapet handrails etc. must be free of chert, flint, limonite, lignite and soft sandstone.
The concrete floor slab shall be finished in accordance with Art. 51.19 of the Standard Specifications.
Slope Wall shall be reinforced with welded wire fabric 6"x6" mesh, #4 wires weighing 50 Lbs. per 100 sq. ft.
Rivets 3" Open Holes 1/2", unless noted.
All structural steel shall conform to the A.S.T.M. Specifications for structural steel A.S.T.M. Designation A 36.
All rollers, rockers, bearing plates, lead plates, pintles and anchor bolts shall be fabricated and set in accordance with Art. 51.15 of the Standard Specifications and are included in quantity of structural steel. Estimated Wt. 13000 Lbs.
Anchor bolts shall be set before riveting diaphragms over supports.
Expansion Guards shall be fabricated and erected in accordance with Art. 51.13 (c) of the Standard Specifications.
Expansion Guards are included in quantity of structural steel. Estimated Wt. 3070 Lbs.
Except as otherwise provided all structural steel shall receive one shop coat of red lead paint and two field coats of aluminum paint. See Arts. 56.1 to 56.5 inclusive of the Standard Specifications.
The Contractor shall drive one test pile at each abutment in permanent locations as directed by the Engineer before ordering remainder of piles.



STATION 148+43.23
ILLINOIS CENTRAL R.R.
BUILT 196
F.A.S. RT. 1305 - SEC. 79R-VB
PROJECT U.S. 1305-1(1)
LOADING H20-516
NAME PLATE
see standard 2113

DESIGNED	Walter Kory	EXAMINED	H.E. Benham
CHECKED	W. G. Powell	PASSED	Shank
DRAWN	W. F. Miller	APPROVED	M. J. ...
CHECKED	M.P.		



DESIGN STRESSES
fc - - - - 1400 psi Super. & Sub.
vc - - - - 75 psi Ftg.
fs - - - - 20000 psi Reinf.
fs - - - - 20000 psi Struct.
n - - - - 10

TOTAL BILL OF MATERIAL - SEC. 79R-VB

ITEM	UNIT	SUPER.	SUBSTR.	TOTAL
Borrow Excavation	Cu.Yds.	950	750	
Removal of Existing Structures	Each		1	
Class-A Excavation for Structures	Cu.Yds.	530	330	
Rock Excavation for Structures	Cu.Yds.	20	20	
Erecting Structural Steel	Lbs.	30400	30400	
Class-X Concrete	Cu.Yds.	312.1	363.2	675.3
Aluminum Handrail	Lin.Ft.	352		352
Reinforcement Bars	Lbs.	63960	31020	95000
Creosoted Piles - Up to 20'	Lin.Ft.	360	360	
Steel Piles	Lin.Ft.	756	756	
Test Piles (Steel)	Each	2	2	
Name Plates	Each	1	1	
Slope Wall - 4'	Sq.Yds.	933	933	
Protective Coat	Sq.Yds.	1343	1343	
Temporary Steel Sheet Piling (Sec. Mod. 2.4 in ³)	Sq.Ft.	960	960	
SECTION 79R-VF				
Furnishing Structural Steel	Lbs.	30400		30400

GENERAL PLAN & ELEVATION
F.A.S. RT. 1305 OVER ILL. CENTRAL R.R.
SEC. 79R-V(B,F)
KANKAKEE COUNTY
STATION 148+43.23