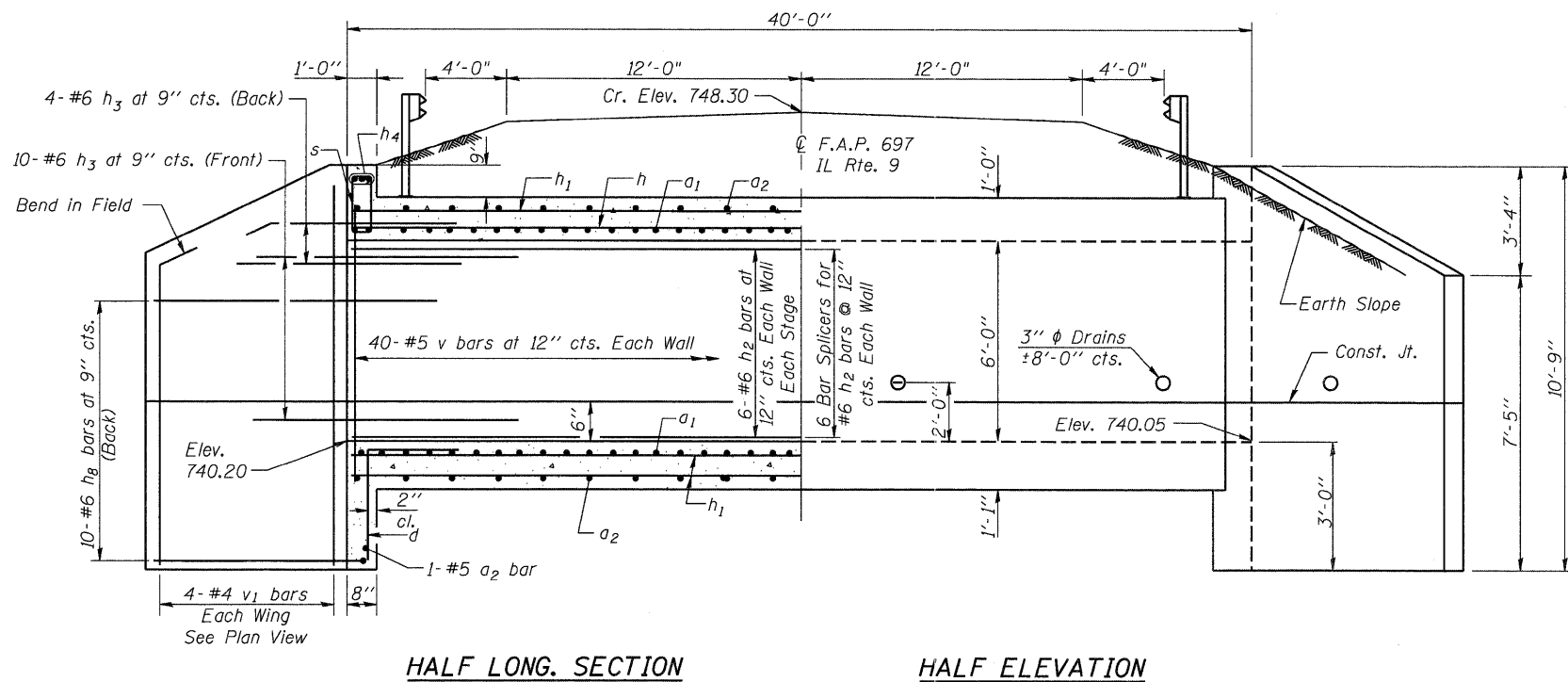
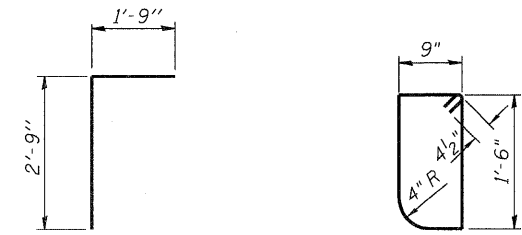


STATE OF ILLINOIS  
DEPARTMENT OF TRANSPORTATION



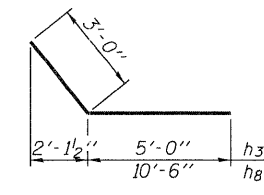
HALF LONG SECTION

HALF ELEVATION



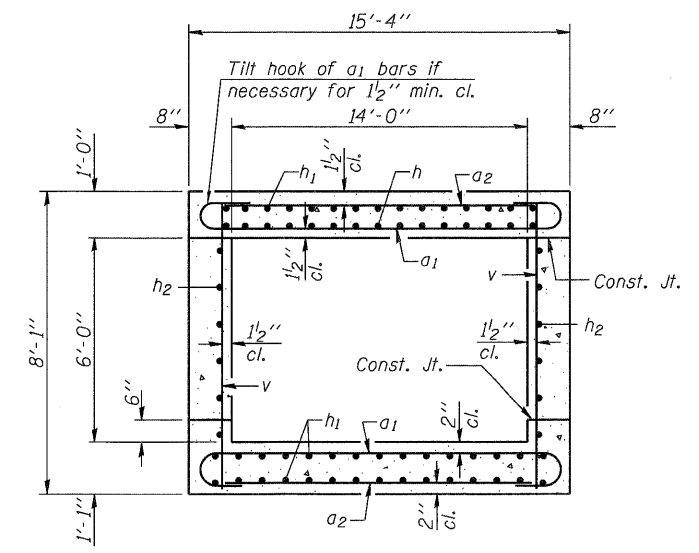
BAR d

BAR s  
(Up Stream End Only)

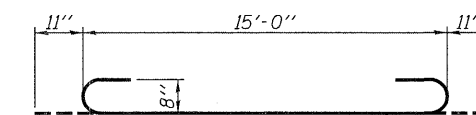


BARS h3 & h8

BAR s1  
(Down Stream End Only)



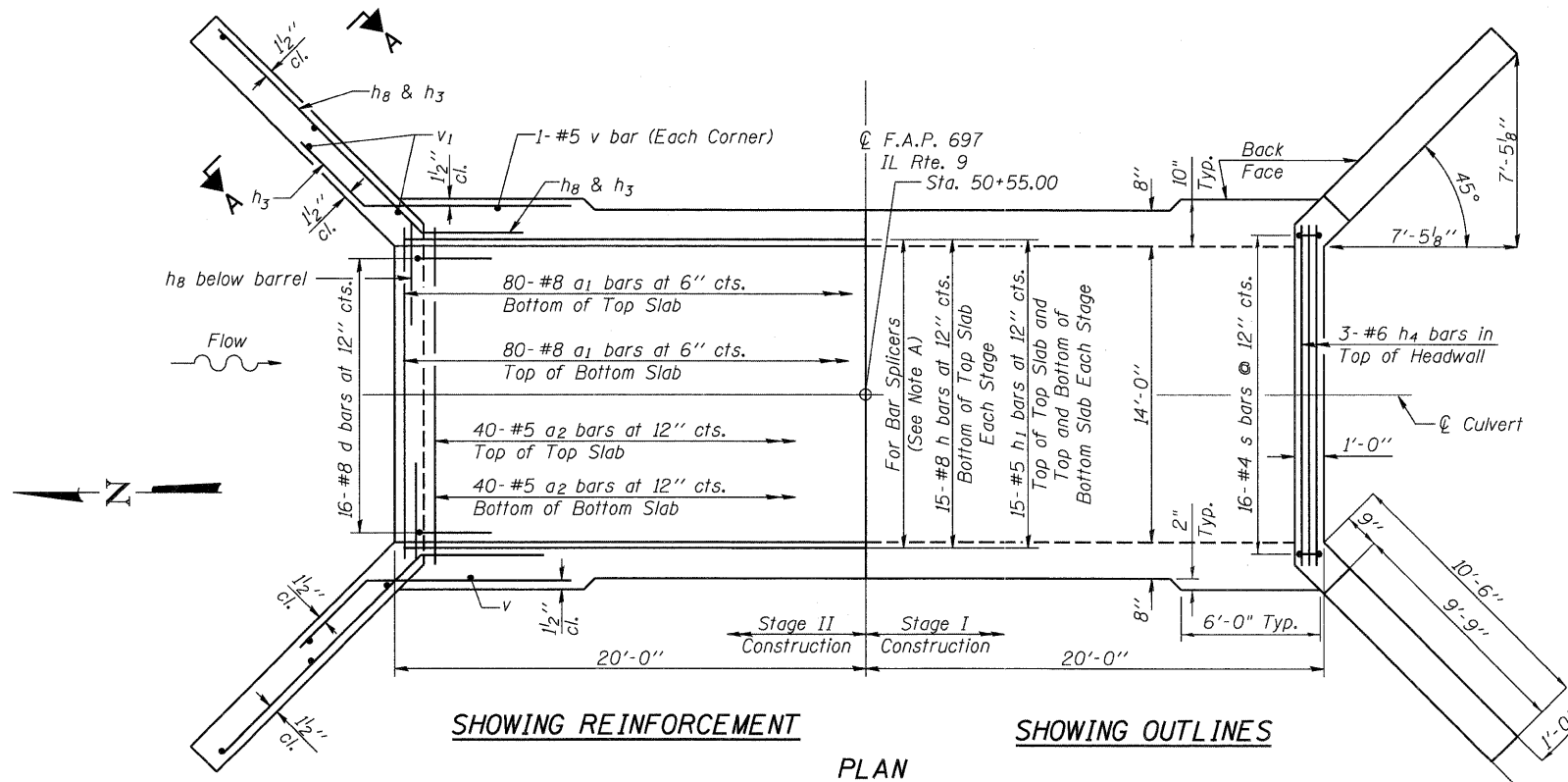
SECTION THRU BARREL



BAR a1

BILL OF MATERIAL

Bar	No.	Size	Length	Shape
a1	160	#8	16'-10"	
a2	80	#5	15'-1"	
d	32	#4	4'-6"	
h	30	#8	19'-9"	
h1	90	#5	19'-9"	
h2	24	#6	19'-9"	
h3	56	#6	8'-0"	
h4	6	#6	14'-9"	
h8	40	#6	13'-6"	
v	84	#5	7'-10"	
v1	16	#4	10'-6"	
s	16	#4	5'-3"	
s1	16	#4	4'-9"	
Concrete Box Culverts			Cu. Yd.	65.1
Reinforcement Bars			Pound	15,530
Bar Splicers			Each	72



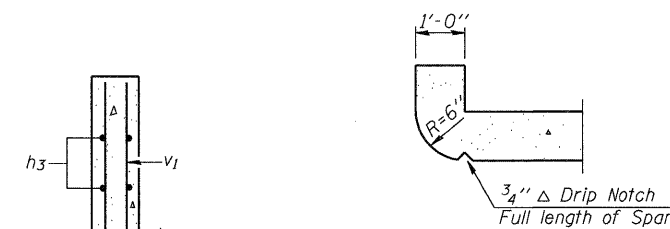
SHOWING REINFORCEMENT

SHOWING OUTLINES

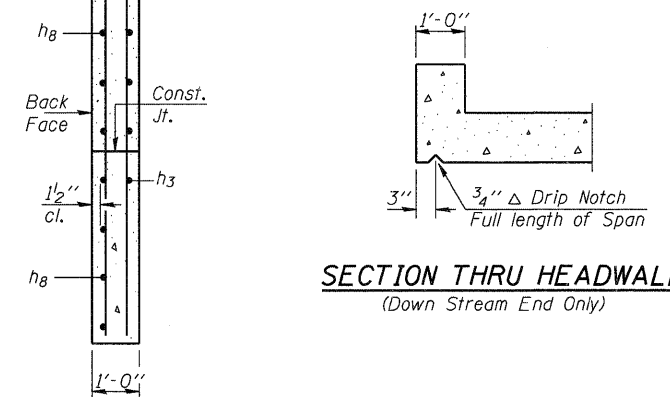
Note A:  
15 - Bar Splicers for #8 h bars, Bottom of Top Slab  
15 - Bar Splicers for #5 h1 bars, Top of Top Slab  
15 - Bar Splicers for #5 h1 bars, Bottom of Bottom Slab  
15 - Bar Splicers for #5 h1 bars, Top of Bottom Slab

NOTES

A distance of half the length of the wingwall but not less than six feet of the barrel shall be poured monolithically with the wingwalls.  
Reinforcement bars shall conform to the requirements of ASTM A 706 Gr 60. See Special Provisions.



SECTION THRU HEADWALL  
(Up Stream End Only)



SECTION THRU HEADWALL  
(Down Stream End Only)

SECTION A-A

CULVERT AND WINGWALL SECTIONS AND DETAILS  
ILLINOIS ROUTE 9 OVER DRAINAGE DITCH  
F.A.P. ROUTE 697 - SECTION 17(I)

FORD COUNTY

STATION 50+55.00

SN 027-2552

Scale: None March 2009

DESIGNED	- GBC/GMK
CHECKED	- GBC/GMK/SMK
DRAWN	- RR
CHECKED	- GBC/GMK/SMK

SSB-H-0

SHEET NO. S3	F.A.P. RTE. 697	SECTION 17(I)	COUNTY FORD	TOTAL SHEETS 29	SHEET NO. 19
55 SHEETS	CONTRACT NO. 66874		ILLINOIS FED. AID PROJECT		