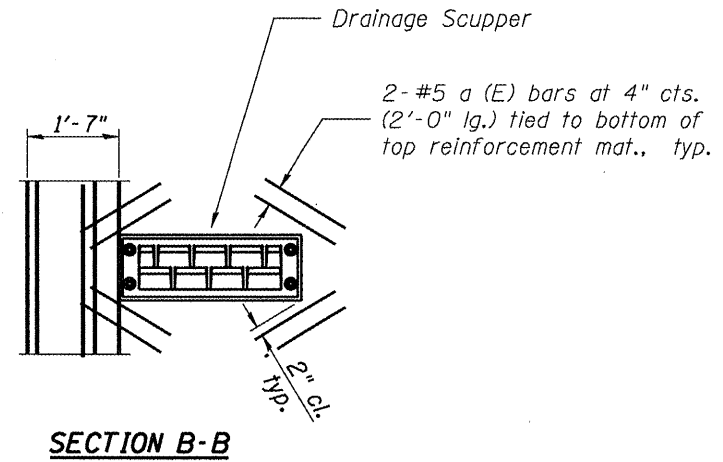


Note: Distances shown on Radial Lines or Arcs

CROSS SECTION
(Looking West)



Notes:
 Reinforcement bars designated (E) shall be epoxy coated.
 Bars indicated thus 20 x 3-#5 etc. indicates 20 lines of bars with 3 lengths per line.
 Section views drawn "FOR INFORMATION ONLY" to be used as reference for beam repair.

SN.090-0069 NB. IL.116
 Ramp over SB. IL.116

FILE NAME = SN090-0069 (2).dgn	USER NAME = jonesco	DESIGNED - CEJ	REVISED - ---
		DRAWN - CEJ	REVISED - ---
		CHECKED - ---	REVISED - ---
		DATE - ---	REVISED - ---

STATE OF ILLINOIS
DEPARTMENT OF TRANSPORTATION

EXISTING CROSS SECTIONS	
SCALE: _____	SHEET NO. ____ OF ____ SHEETS
STA. _____	TO STA. _____

F.A.P. RTE.	SECTION	COUNTY	TOTAL SHEETS	SHEET NO.
673	(102-HB-211-2	TAZEWELL	17	4
STEEL BEAM REPAIRS		CONTRACT NO. 68857		
FED. ROAD DIST. NO. 4 ILLINOIS FED. AID PROJECT				