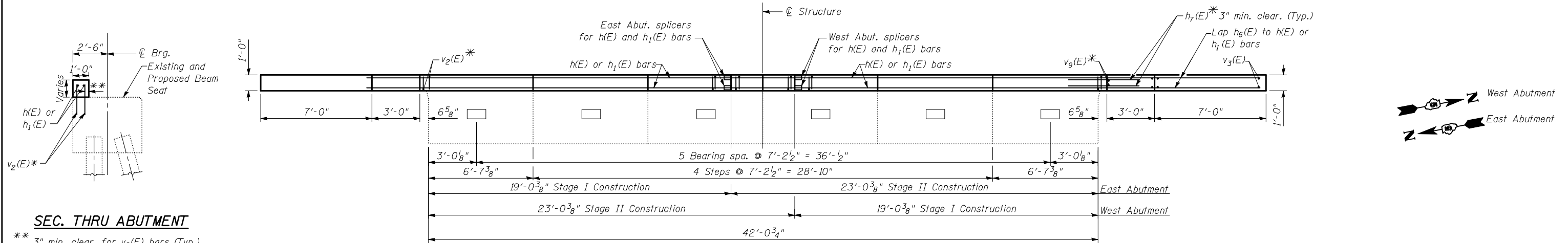
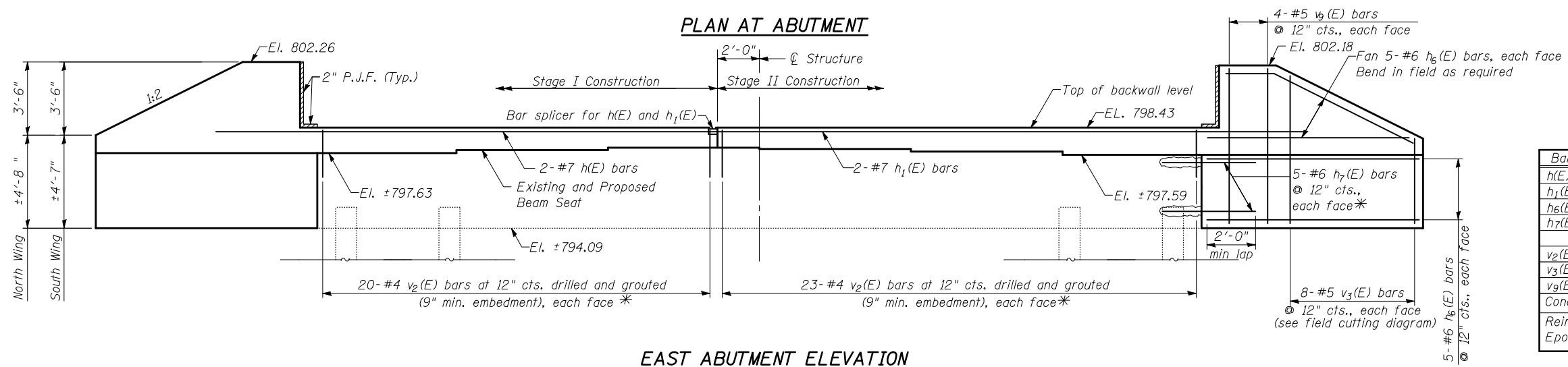


STATE OF ILLINOIS
DEPARTMENT OF TRANSPORTATION



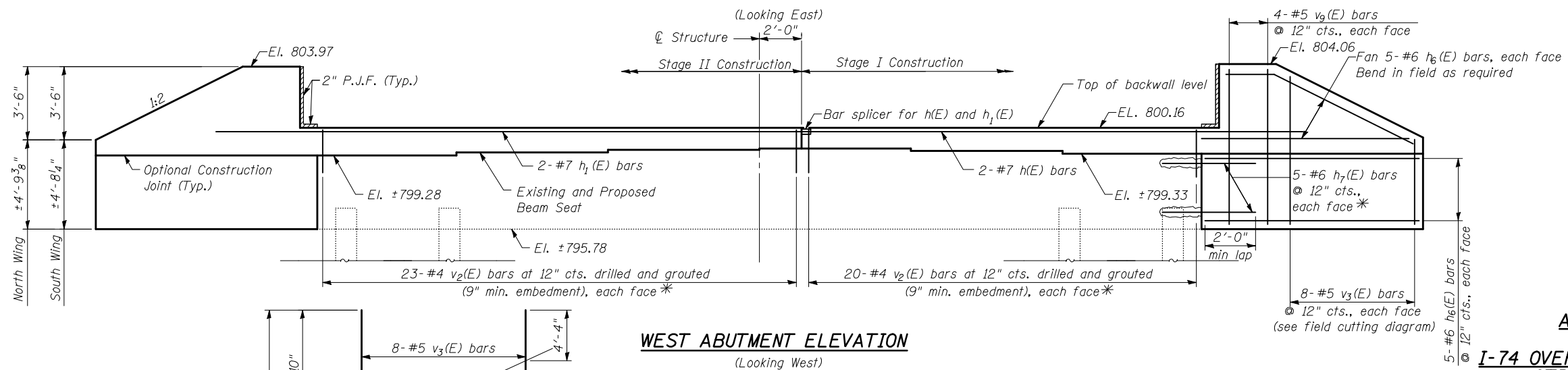
PLAN AT ABUTMENT



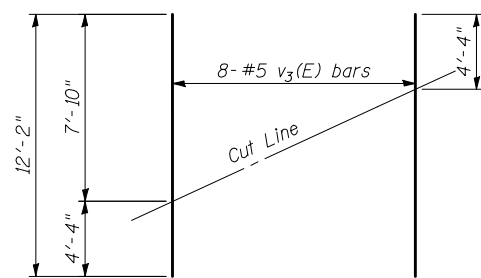
BILL OF MATERIALS

Bar	No.	Size	Length	Shape
h(E)	4	#7	23'-1"	—
h ₁ (E)	4	#7	27'-1"	—
h ₆ (E)	80	#6	10'-2"	—
h ₇ (E)	40	#6	3'-0"	—
v ₂ (E)	172	#4	2'-1"	—
v ₃ (E)	32	#5	12'-2"	—
v ₉ (E)	32	#5	7'-10"	—
Concrete Structures		CU YD	14	
Reinforcement Bars, Epoxy Coated		LB	2,720	

EAST ABUTMENT ELEVATION



WEST ABUTMENT ELEVATION



FIELD CUTTING DIAGRAM

Order v₃(E) full length. Cut as shown and use remainder of bars in opposite face.

Notes:
Where new concrete is to be poured against existing, roughen existing concrete to 1/4" minimum amplitude and apply Bonding Agent. Cost shall be included with Concrete Structures.

*Epoxy Grout h₇(E) and v₂(E) bars in 9" Min. drilled holes according to Article 584 of the Standard Specifications

DESIGNED	RRD
CHECKED	AJS
DRAWN	KAS
CHECKED	JAR

SHEET NO. 20 27 SHEETS	F.A.I. RTE. 74	SECTION (57-21B)BR	COUNTY MCLEAN	TOTAL SHEETS 61	SHEET NO. 32
	ABUT. CAP AND WINGWALLS (1 OF 2)		CONTRACT NO. 70641		
FED. ROAD DIST. NO.		ILLINOIS FED. AID PROJECT			

ABUTMENT DETAILS
EASTBOUND

I-74 OVER LITTLE KICKAPOO CREEK
STRUCTURE NO. 057-0120

STRAND ASSOCIATES, INC.