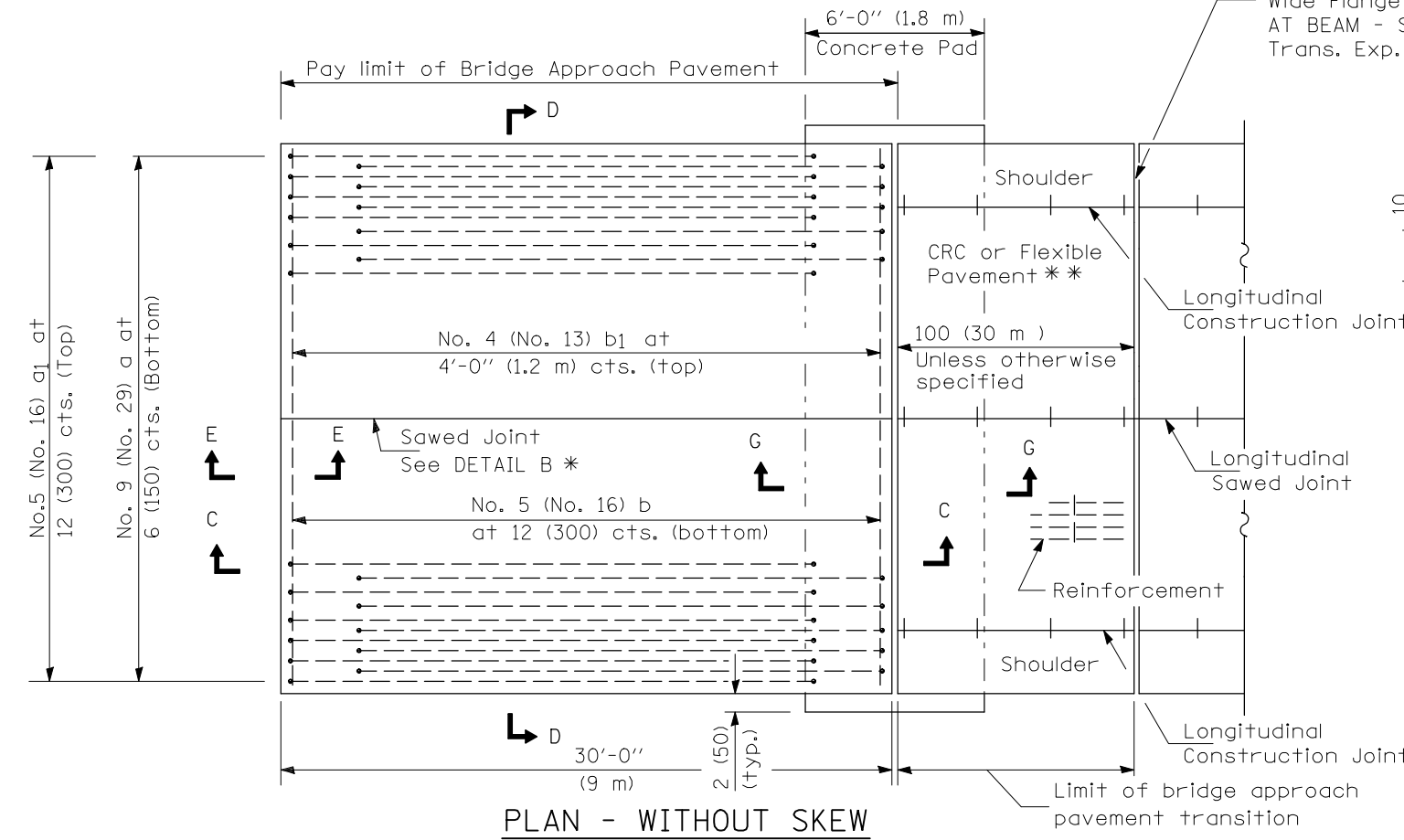


PLAN - WITH SKEW

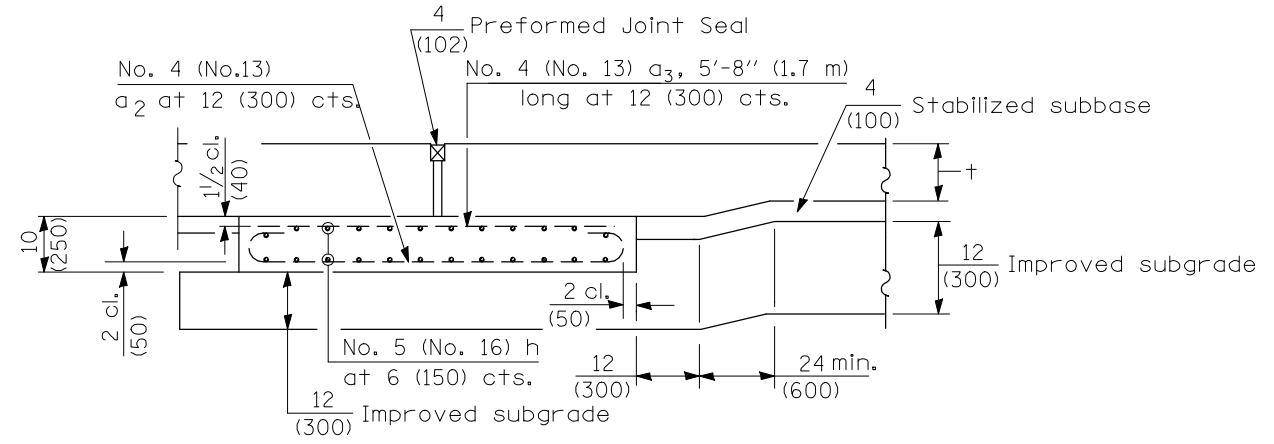
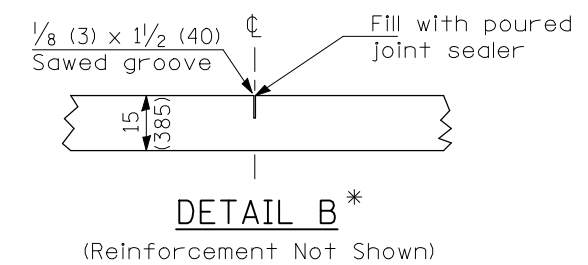


PLAN - WITHOUT SKEW

* Saw ∇ or lane edge if poured two or more lane widths at a time.
 ** Omit Reinforcement, tie bars and Long. sawed Jt. for Flexible Pavement.

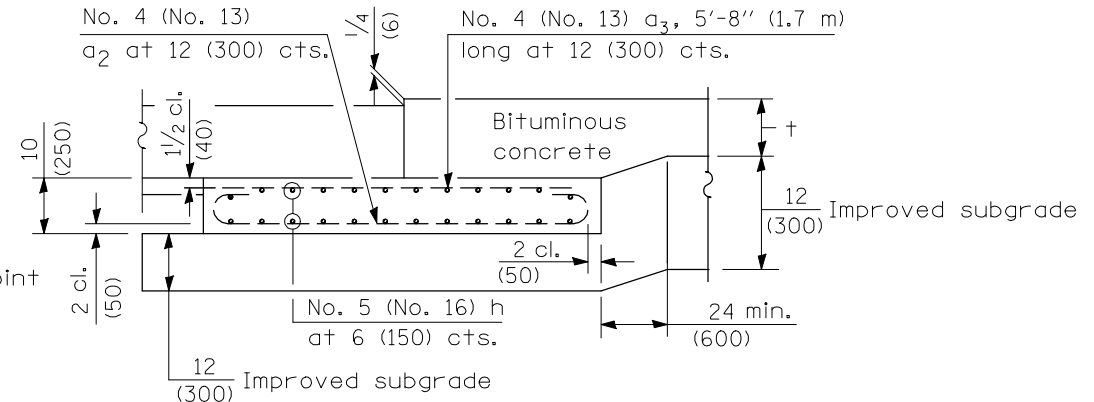
NEW CONSTRUCTION

Limit of bridge approach pavement transition
 Shoulder
 Reinforcement
 100'-0" (30 m) Unless otherwise specified
 CRC or Flexible Pavement **
 Longitudinal Sawed Joint
 Longitudinal Construction Joint



SECTION G-G - RIGID PAVEMENT
 (Showing reinforcement)

Rigid Pavement only:
 Wide Flange Beam Terminal Joint (See DETAIL AT BEAM - Standard 421101 or 421106) or 2 (50)
 Trans. Exp. Joint as detailed on Standard 420001.



SECTION G-G - FLEXIBLE PAVEMENT
 (Showing reinforcement)

GENERAL NOTES

THICKNESS-"t"=Thickness of Pavement.
 See Standard 421001 for reinforcement details not shown.
 See Standard 420001 for joint details not shown.
 All dimensions are in inches (millimeters) unless otherwise shown.

| BRIDGE APPROACH PAVEMENT DETAIL | | F.A.I. RTE. | SECTION | COUNTY | TOTAL SHEETS | SHEET NO. |
|---------------------------------|-------------------------|--------------------|------------|--------|--------------|-----------|
| SCALE: | SHEET NO. 1 OF 4 SHEETS | 74 | (57-21B)BR | MCLEAN | 61 | 40 |
| STA. TO STA. | | CONTRACT NO. 70641 | | | | |
| ILLINOIS FED. AID PROJECT | | | | | | |