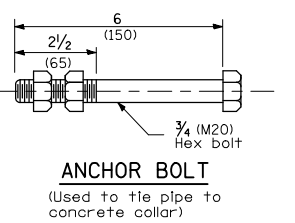
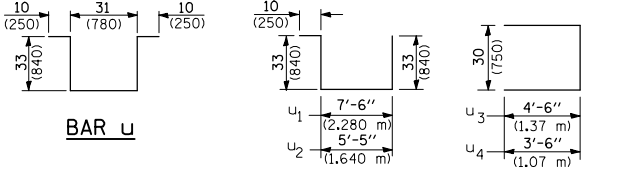


**TYPICAL CORNER of STEEL GRATING FRAME**  
\*\*Cut or Grind flush

**INLET BOX, SLAB, & CURB**

REQUIRED MATERIAL							
TYPE E			TYPE F				
Bar	Qty.	Size	Length	Bar	Qty.	Size	Length
h	8	No. 4 (No. 13)	4'-0" (1.22 m)	h	8	No. 4 (No. 13)	4'-0" (1.22 m)
h <sub>1</sub>	4	No. 4 (No. 13)	9'-8" (2.95 m)	h <sub>1</sub>	6	No. 4 (No. 13)	9'-8" (2.95 m)
h <sub>2</sub>	18	No. 4 (No. 13)	3'-3" (1.00 m)	h <sub>2</sub>	26	No. 4 (No. 13)	3'-3" (1.00 m)
h <sub>3</sub>	14	No. 4 (No. 13)	6'-4" (1.93 m)	h <sub>3</sub>	14	No. 4 (No. 13)	10'-4" (3.15 m)
h <sub>4</sub>	2	No. 4 (No. 13)	19'-8" (6.00 m)	h <sub>4</sub>	2	No. 4 (No. 13)	19'-8" (6.00 m)
h <sub>5</sub>	6	No. 4 (No. 13)	0'-8" (0.20 m)	h <sub>5</sub>	6	No. 4 (No. 13)	0'-8" (0.20 m)
u	6	No. 4 (No. 13)	9'-9" (2.96 m)	u	8	No. 4 (No. 13)	9'-9" (2.96 m)
u <sub>2</sub>	3	No. 4 (No. 13)	11'-9" (3.57 m)	u <sub>1</sub>	3	No. 4 (No. 13)	13'-10" (4.21 m)
u <sub>4</sub>	6	No. 4 (No. 13)	9'-6" (2.89 m)	u <sub>3</sub>	6	No. 4 (No. 13)	11'-6" (3.49 m)
v	6	No. 4 (No. 13)	0'-10" (0.20 m)	v	6	No. 4 (No. 13)	0'-10" (0.20 m)
Concrete	cu. yds. (m <sup>3</sup> )	2.7 (2.06)		Concrete	cu. yds. (m <sup>3</sup> )	3.9 (3.0)	
Reinf. bars	lbs. (kg)	280 (127.0)		Reinf. bars	lbs. (kg)	380 (167.0)	
Grating	sq. ft. (m <sup>2</sup> )	7.3 (0.68)		Grating	sq. ft. (m <sup>2</sup> )	10.9 (1.02)	

INLET TYPE	SHOULDER WIDTH	0-0 GRATING FRAME	INLET BOX INSIDE WIDTH	INLET BOX INSIDE LENGTH
Type E	6' (1.8 m)	4'-4" (1.325 m)	3'-11" (1.195 m)	18 (460)
Type F	10' (3.0 m)	6'-5" (1.960 m)	6'-0" (1.830 m)	18 (460)



**GENERAL NOTES**

See Standard 420001 for joint details not shown.

All exposed edges of the inlet, except the upper perimeter, shall be beveled 20 mm (3/4 ") unless otherwise shown.

All dimensions are in inches (millimeters) unless otherwise shown.

For placement of drainage elements on existing construction with existing rigid pavement, substitute expansion anchor ties for the tie bars. For non-rigid pavements or monolithic construction of pcc slab and shoulder, omit tie bars.

The cost of PCC slab shall be included in the cost of Type E or F Inlet Box, Standard 610001 (SPECIAL).

The cost of concrete curb shall be included in the cost of Concrete Curb (Doweled).