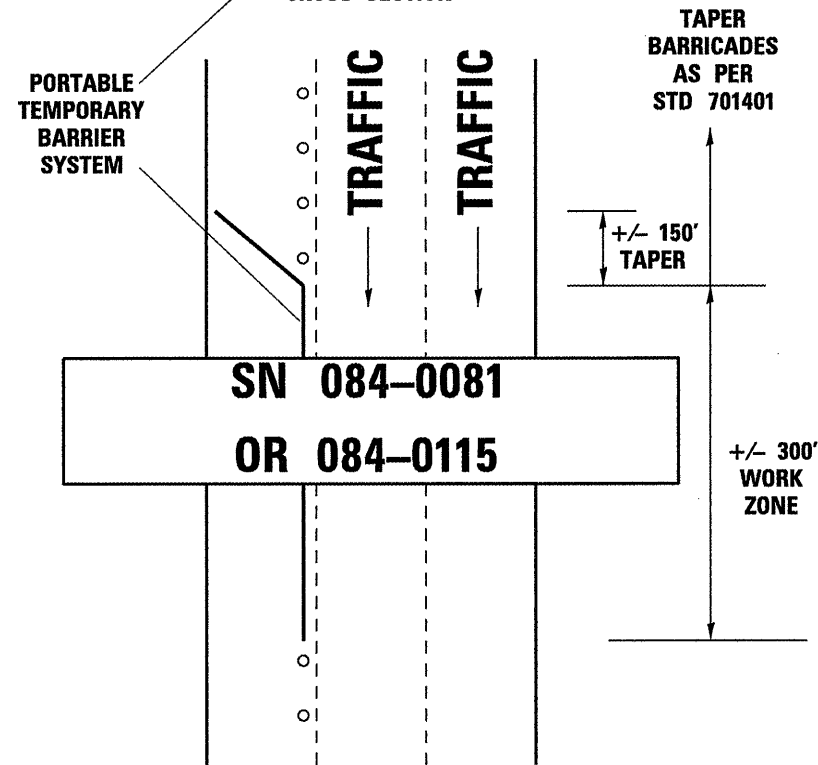
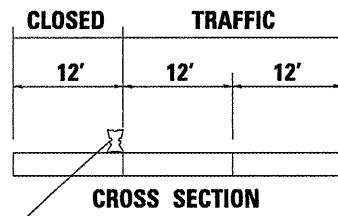
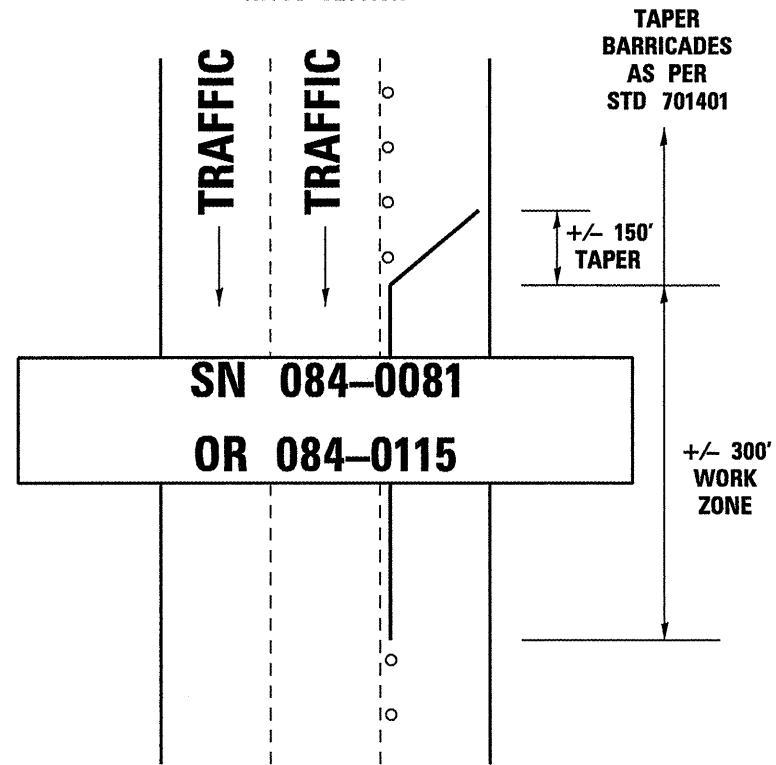
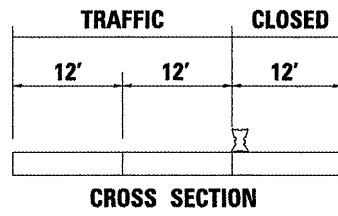


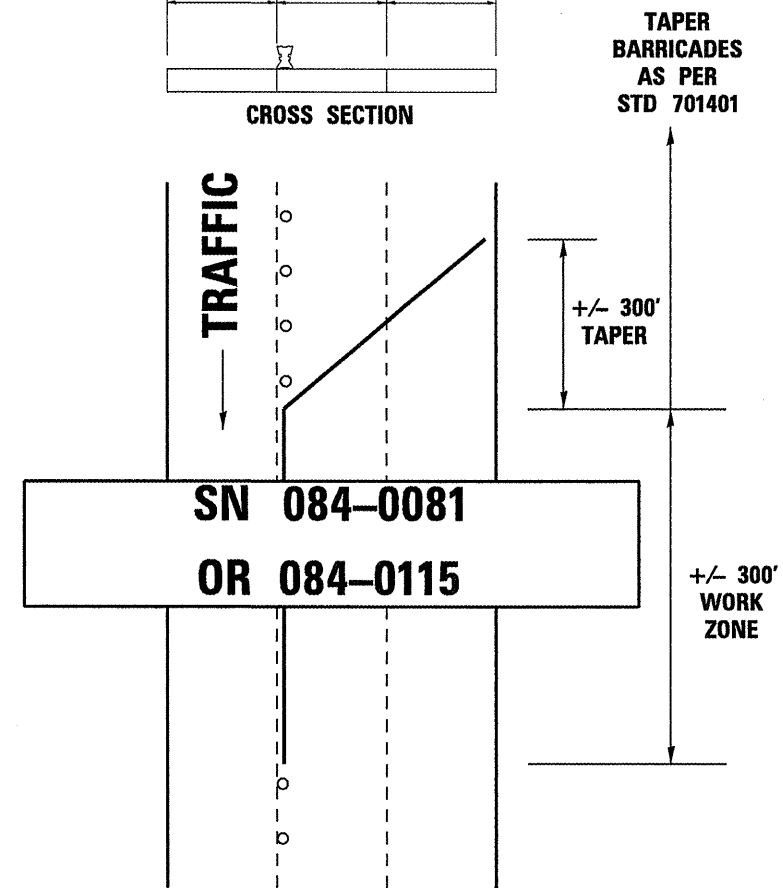
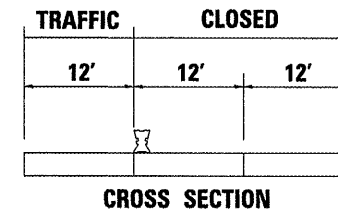
**LANE CLOSURE 1**



**LANE CLOSURE 2**



**LANE CLOSURE 3**



**NOTES:**

ONLY SOUTHBOUND LANES ARE SHOWN. NORTHBOUND LANES SHALL FOLLOW THE SAME PLAN.

THE CONTRACTOR MAY ELECT TO CHANGE THE ORDER OF THE LANE CLOSURES WITH APPROVAL FROM THE ENGINEER, BUT THE CENTER LANE SHALL ONLY BE CLOSED IN CONJUNCTION WITH THE ADJACENT PASSING LANE.

ALL BARRICADES, BARRICADE LIGHTING, SIGNING, ETC. SHALL BE PAID FOR UNDER TRAFFIC CONTROL AND PROTECTION, STANDARD 701401. THE PORTABLE TEMPORARY BARRIER SYSTEM SHALL BE PAID FOR SEPARATELY BY THE FOOT.

TANGENT LENGTHS OF THE PORTABLE TEMPORARY BARRIER SYSTEM MAY BE SHORTENED WHEN DEEMED SAFE TO DO SO BY THE ENGINEER. BARRIER SYSTEM LENGTHS MAY ONLY BE LENGTHENED WITH PRIOR APPROVAL FROM THE ENGINEER.

I-55 LANE CLOSURE DETAIL  
FAI 55 (I-55)  
D-6 REHAB BDGE PAINTING 2009  
SANGAMON COUNTY