

084-0081

DATE	3/18	BY	CH
DATE	5/12	BY	CH

GENERAL NOTES

Coarse aggregate to be used in parapet handrail and abutment wingwalls must be free of chert, flint, limonite, lignite and soft sandstone.
The concrete floor slab shall be finished in accordance with Article 519 of the Standard Specifications.
Permanent forms will not be permitted in forming the concrete floor.
All reinforcement bars shall be lapped 24 diameters unless otherwise shown.
Slope wall shall be reinforced with welded wire fabric, 6"x6" mesh, weighing 50 lbs per 100 sq ft.
For item Precast Prestressed Concrete Beam, see supplemental specifications effective January 3, 1966.
All structural steel shall conform to A.S.T.M. Designation A36.
All welding shall conform to the current specifications for Welded Highway and Railway Bridges of the American Welding Society and Special Provisions.
Field welding of construction accessories to the bottom flanges, or for a distance of 1/4 of the span length each way from pier supports on the top flanges of beams or girders, will not be permitted. Field welding in other areas will be permitted only when approved by the Engineer.
Rivets 3/4", Open Holes 1 1/4", unless otherwise noted.
Anchor bolts shall be set before fastening cross frames over supports.
Stud shear connectors on the beam flanges shall be placed in the field after the steel has been erected and the deck forms are in place.
Flange shear connectors are included in the quantity of structural steel.
Estimated Weight - 1930 lbs.
Number required - 3140
Except as otherwise provided, all structural steel shall receive one shop coat of paint and two field coats of paint. See special provisions for paint.
Exposed surfaces of the expansion devices, which are inaccessible after erection, shall receive two shop coats of paint. All other surfaces shall be given one shop coat of paint. Anchor studs shall not be painted.
Expansion devices are included in the quantity of structural steel. Est. weight - 2880 lbs.
Excavation for portions of structures in the embankment shall not be classified.
The Contractor shall drive two (2) steel test piles, one each at the West Abut. and of the Pier 2 each in a permanent location as directed by the Engineer before ordering the remainder of the piles.
Steel piles at Approach Bent shall be driven in holes pre-cored thru the embankment in accordance with Article 60.9 (c) of the Standard Specifications.

TOTAL BILL OF MATERIAL

ITEM	UNIT	SUPER	SUB	TOTAL
Class A Excav for Structure	Cu Yds		240	240
Class X Concrete	Cu Yds	442 B	346.5	788.5
Structural Steel	Lbs	31100		31100
Aluminum Handrail	Lin Ft	690		690
Pipe Culverts (Type-A) 36"	Lin Ft			320
Reinforcement Bars	Lbs	106390	53000	159390
Steel Piles (B.P.36)	Lin Ft		2663	2663
Test Piles, Steel (B.P.36)	Lin Ft		2	2
Name Plates	ea			200
Slope Wall (A)	Sq Yds			1
Bridge Seat Sealant	L.S.		1	1
Precast Prestressed Conc. P.A.M. 36"	Lin Ft	380		380
Protective Coat	Sq Yds	1670		1670

* Applied at Abutments only.

STA. 224+10.10
BUILT 19 BY
STATE OF ILLINOIS
FAI. RT. 55 SEC. 04-4-34B
FA PROJ. I-55-305b
LOADING HS 20

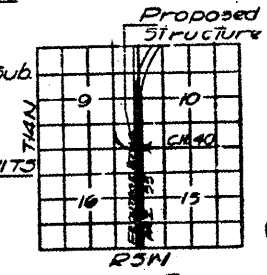
NAME PLATE
Sec Std. 2113-1

DESIGN STRESSES
FIELD UNITS

fc = 1200 psi - Deck Slab
fc = 1400 psi - Curb, Parapet, Sub.
fs = 20,000 psi - Reinf.
fs = 20,000 psi - Struct.
vc = 75 psi - Ftgs.

PRECAST PRESTRESSED UNITS

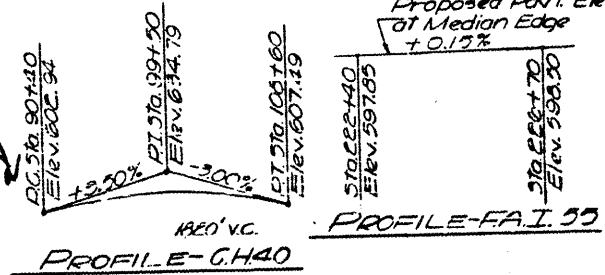
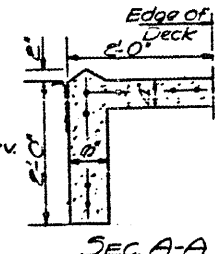
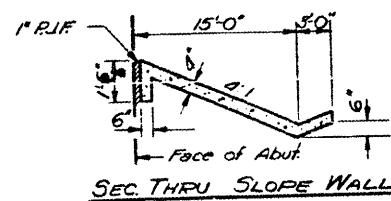
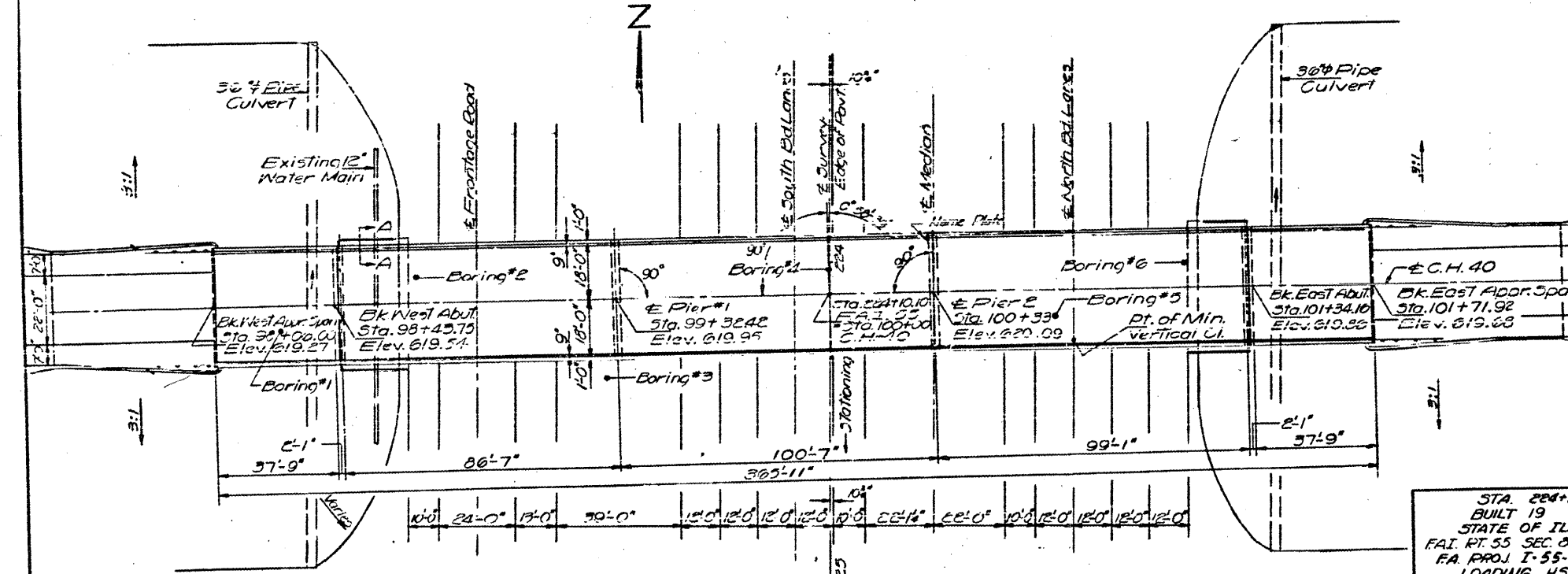
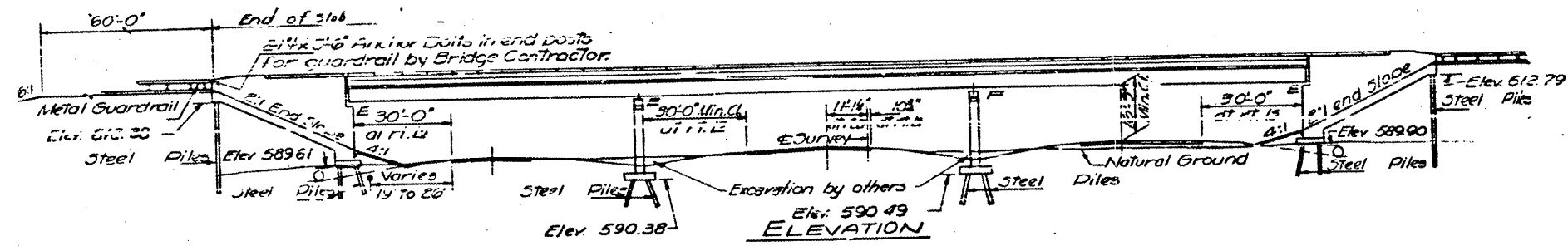
fc = 5000 psi.
ftj = 4000 psi.
fs = 243,000 psi - Strands
ftl = 173,600 psi - Strands
Allowable Fut. N.S. 25"/10'
Allowable Deflection = Eco Composite
LOADING HS 20-44



084-001

B.M. #12 DR Spike in Root of 40' Cherry Tree.
121.160' of Station 225+20 Elev. 597.71

STATE OF ILLINOIS
DEPARTMENT OF PUBLIC WORKS & BUILDINGS
DIVISION OF HIGHWAYS



DESIGNED: P. A. ...
CHECKED: J. W. ...
DRAWN: J. M. HENNINGER
CHECKED: J. W. ...
EXAMINED: ...
PASSED: ...
APPROVED: ...

Rev. 9/15/68 JBN

FOR INFORMATION ONLY

EXISTING PLANS, SN 084-0081
FAI 55 (I-55)
D-6 REHAB BDGE PAINTING 2009
SANGAMON COUNTY