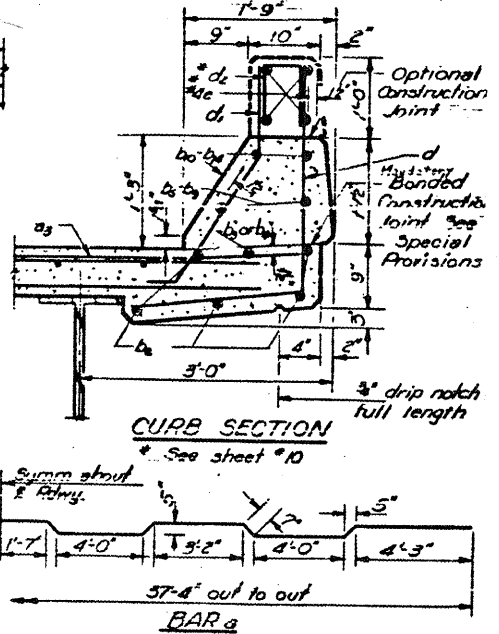
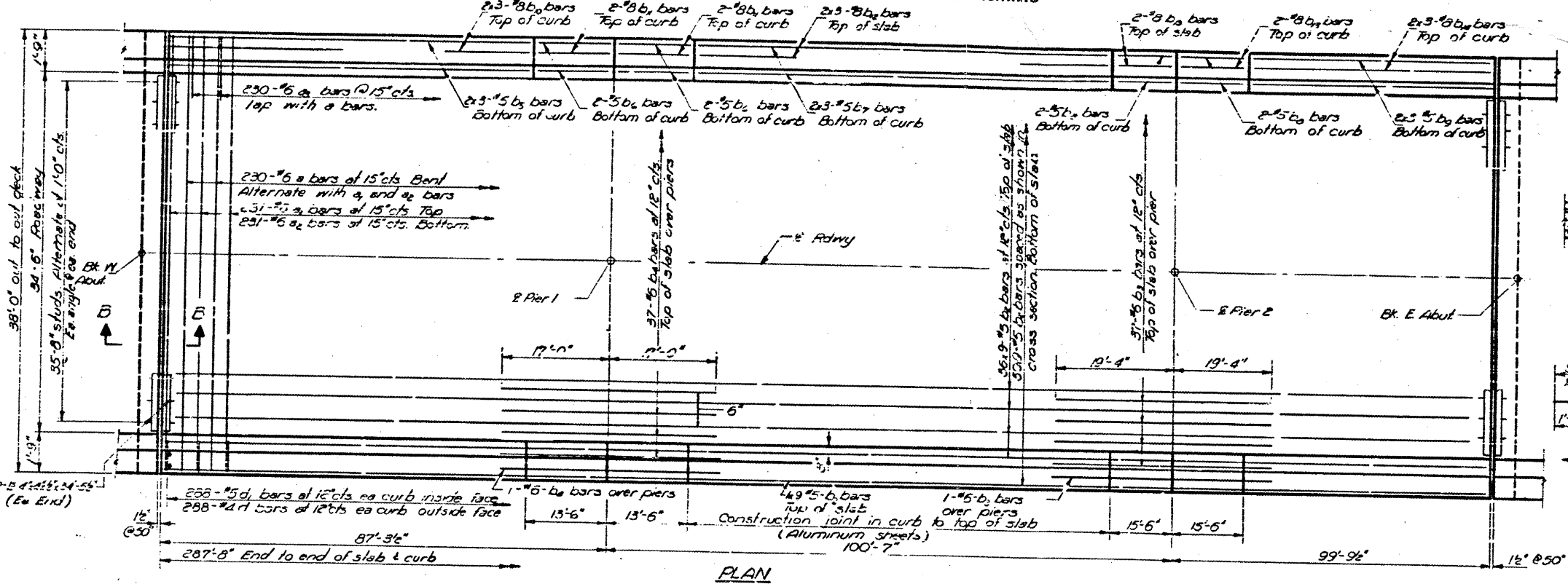


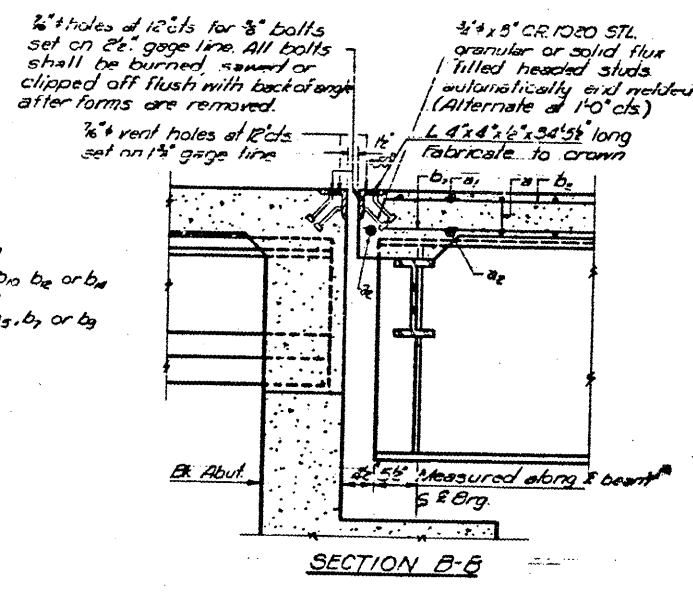
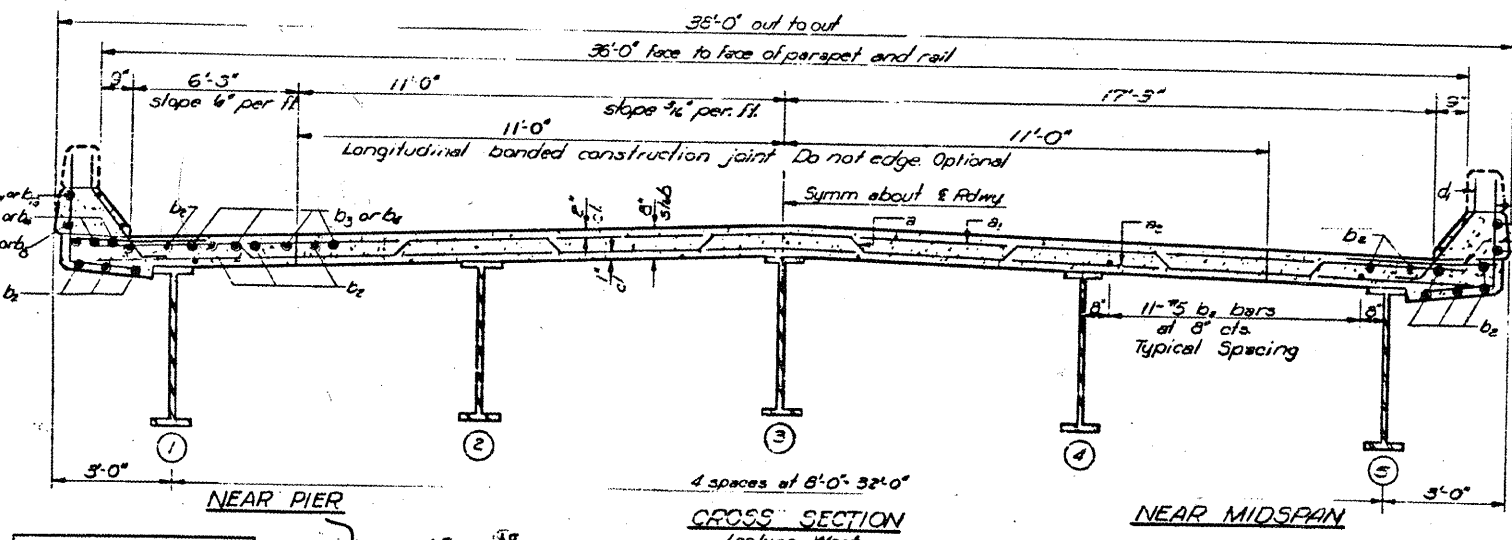
STATE OF ILLINOIS
DEPARTMENT OF PUBLIC WORKS & BUILDINGS
DIVISION OF HIGHWAYS

Notes:
Bars indicated thus 20x3-5etc
indicates 20 lines of bars with
3 lengths per line.
Min bar lap = 2d dia.



BILL OF MATERIAL

Bar	No	Size	Length	Shape
a	230	#6	30'-0"	—
a	231	#6	37'-4"	—
a	231	#6	37'-0"	—
a	460	#6	4'-0"	—
b ₂	792	#5	39'-3"	—
b ₂	30	#6	39'-5"	—
b ₂	39	#6	30'-4"	—
b ₂	12	#5	25'-6"	—
b ₂	8	#5	15'-3"	—
b ₂	12	#5	20'-8"	—
b ₂	8	#5	15'-9"	—
b ₂	12	#5	28'-10"	—
b ₂	12	#5	26'-0"	—
b ₂	8	#8	15'-5"	—
b ₂	12	#8	25'-4"	—
b ₂	8	#8	15'-3"	—
b ₂	12	#8	29'-4"	—
d	576	#4	4'-7"	L
d	576	#5	3'-5"	L
Reinforcement Bars	Lbs.			21870
Structural Steel	Lbs.			31100
Class X Concrete	Cu yd			310.8



DESIGNED *A. P. ...*
CHECKED *...*
DRAWN *J.M. HENNINGER*
CHECKED *...*

EXAMINED *...*
PASSED *...*
APPROVED *...*

Height of bearing assemblies with lead plates and anchor bolts are included as structural steel. Est. 111-7930.

The lengths and quantities of longitudinal reinforcement and Class X Concrete in parapets are not included in above quantities. See sheet 10.

SUPERSTRUCTURE DETAILS
EAL RT 55 SEC 84-4-318
SANGAMON COUNTY
STA. 224+10.10

EXISTING PLANS, SN 084-0081
FAI 55 (I-55)
D-6 REHAB BDGE PAINTING 2009
SANGAMON COUNTY

FOR INFORMATION ONLY