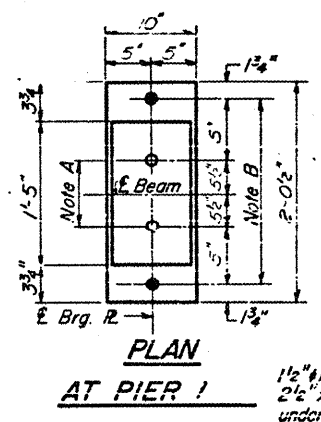
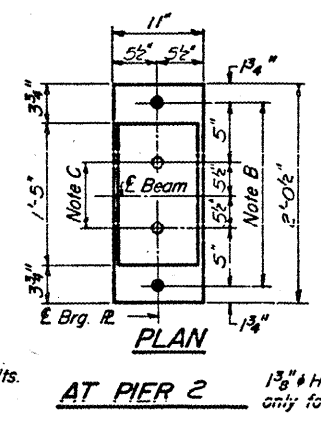


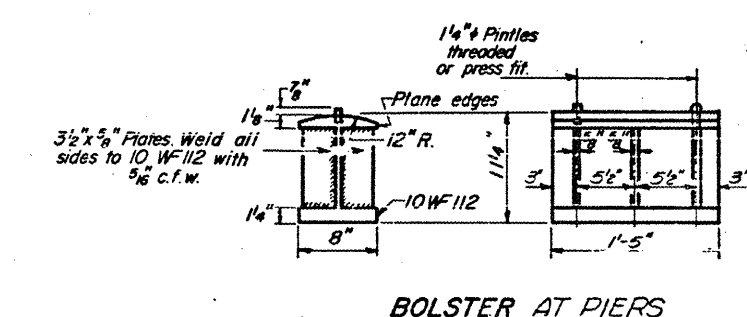
NOTE A
1 3/8" Holes - 1" deep in top R.
for pintles. Thread or press fit
pintles into bottom R.



NOTE B
1 1/2" Holes for 1" anchor bolts.
2 1/2" x 2 1/2" x 5/16" R. Washers
under nut.



NOTE C
1 3/8" Holes 1" deep in top R.
only for 1 1/4" pintles.

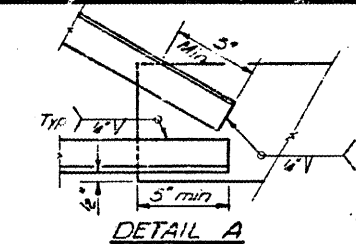


NOTES ON SETTING OF ANCHOR BOLTS AT EXP. BRGS.

- a) D* (Side of brg. away from fixed brg.)
D* = 1/8" per each 100' of expansion for every 15° fall below the normal temp. of 50°F.
- D** (Side of brg. toward fixed brg.)
D** = 1/8" per each 100' of expansion for every 15° rise above the normal temp. of 50°F.

b) After beams have been erected and dimensions D* or D** determined, holes shall be drilled and anchor bolts shall be grouted in place. All fixed anchor bolts may be built into the masonry.

BEARING ASSEMBLY DETAILS



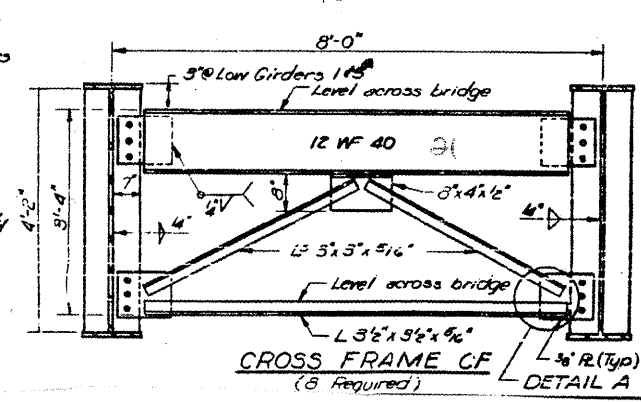
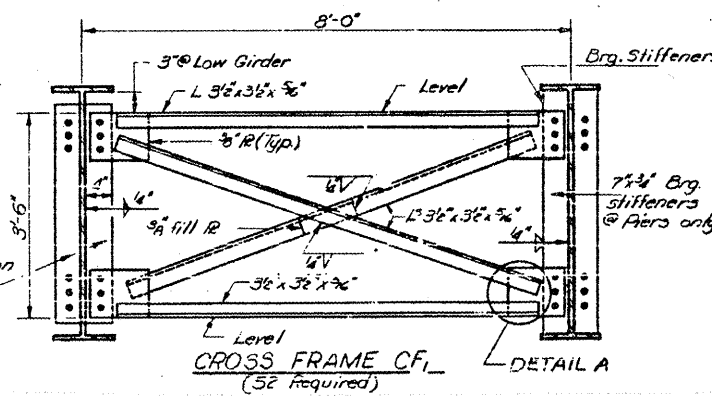
ELEVATION TOP OF WEB
(for fabrication only)

Loc. of Girder	1#3	2#4	3
E Brg. W. Abut.	618.57	618.72	618.84
E Shop 3rd 1	618.90	619.05	619.17
E Brg. P-1	618.94	619.09	619.21
E Field 3rd 1	619.33	619.14	619.26
E Shop 3rd 2	619.07	619.22	619.34
E Brg. P-2	619.04	619.19	619.31
E Field 3rd 2	619.02	619.17	619.29
E Brg. E. Abut.	618.89	619.04	619.16

Note:
See sheet # 8 for framing plan. All butt welded joints shall be prequalified according to AWS D2.0-66 Specifications. For details of welding designations see AWS D2.0-66 Specifications.
Height of structural steel billed on sheet # 7. The contact surfaces of all field splices shall be free of all oil & paint.
Work this sheet with sheet # 8

DESIGNED: A. J. Hoffmann
CHECKED: J. W. Clark
DRAWN: J. M. H.
CHECKED: J. W. Clark
EXAMINED: [Signature]
APPROVED: [Signature]

4" x 3/8" connection plate in intermediate frames



I-2-B 9-1-65

CROSS FRAMES & BEARING DETAILS
FAI. RT. 55 SEC. 84-4-3HB
SANGAMON COUNTY
STA. 224 + 10.10

FOR INFORMATION ONLY

EXISTING PLANS, SN 084-0081
FAI 55 (I-55)
D-6 REHAB BDGE PAINTING 2009
SANGAMON COUNTY