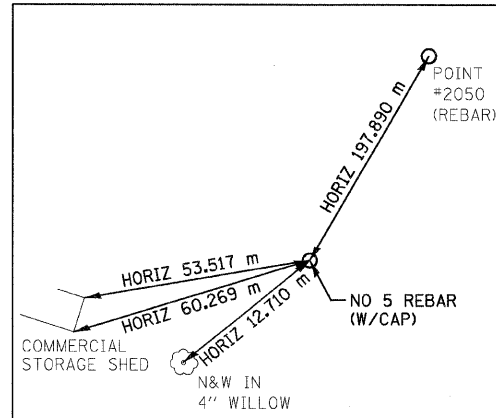
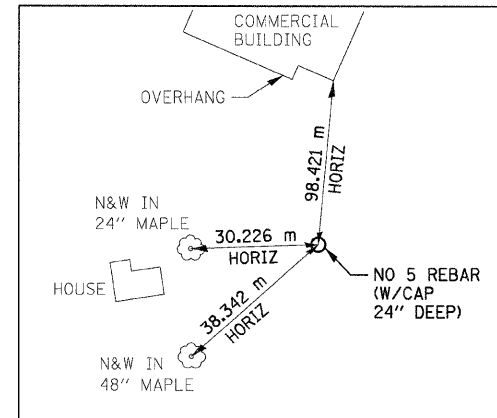


F.A.P. RTE.	SECTION	COUNTY	TOTAL SHEETS	SHEET NO.
310	60-15-2 60-15HB-2	MADISON	272	36
STA.		TO STA.		
FED. ROAD DIST. NO.		ILLINOIS FED. AID PROJECT		
CONTRACT NO. 76624				



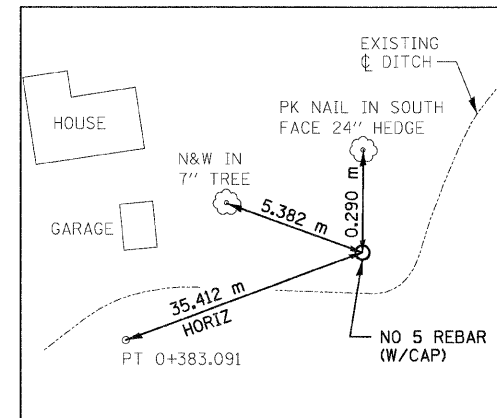
DRAINAGE DITCH
PT STA 0+095.658

N 255,445.9119 E 697,993.3845



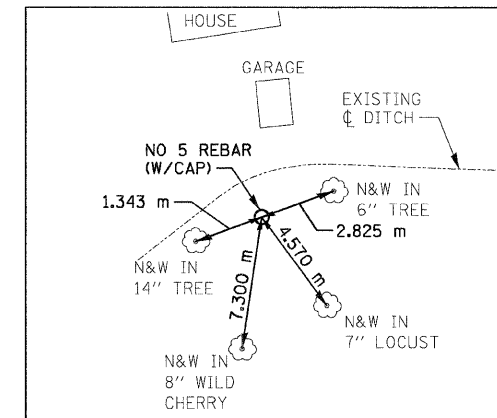
DRAINAGE DITCH
PC STA 0+315.023

N 255,257.2274 E 697,881.4955



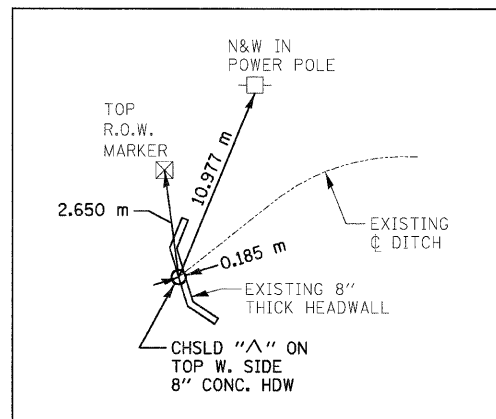
DRAINAGE DITCH
PI STA 0+350.435

N 255,226.7686 E 697,863.4333



DRAINAGE DITCH
PT STA 0+383.091

N 255,214.4644 E 697,830.2282



DRAINAGE DITCH
END POT STA 0+402.679

N 255,207.6580 E 697,811.8600



(TYP ALL TIES THIS DWG)

REVISIONS	
NAME	DATE

ILLINOIS DEPARTMENT OF TRANSPORTATION
HORIZONTAL CONTROL TIES
FAP 310 (IL 255)
SECTION 60-15-2 & 60-15HB-2
MADISON COUNTY
DRAWN BY B G J
CHECKED BY
DATE

12/7/2007

p:\00f\1es\000024\dl\111\Details\Misc\ties.dgn