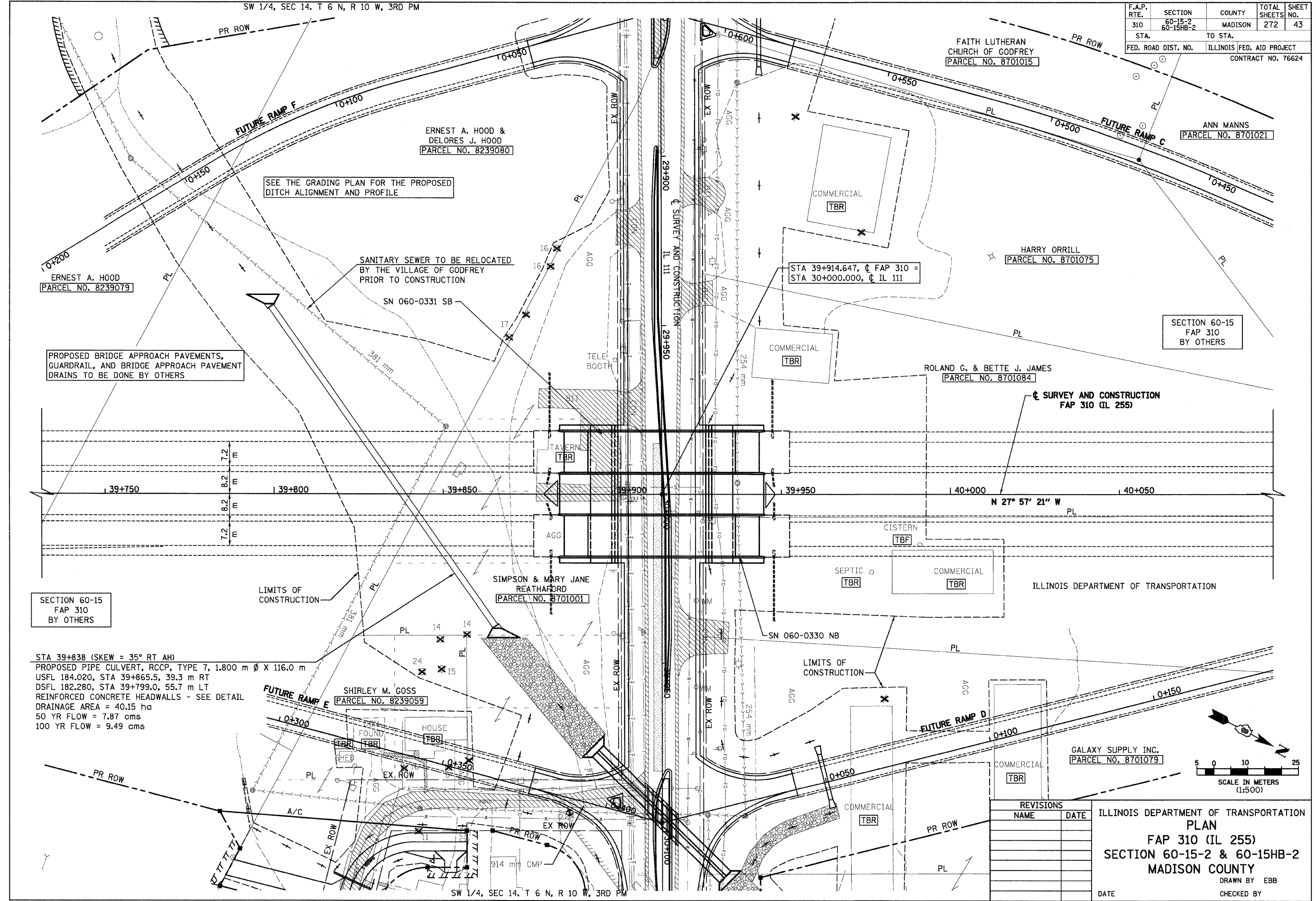


SW 1/4, SEC 14. T 6 N, R 10 W, 3RD PM

F.A.P. RTE.	SECTION	COUNTY	TOTAL SHEETS	SHEET NO.
310	60-15-2 60-15HB-2	MADISON	272	43
STA.	TO STA.			
FED. ROAD DIST. NO.	ILLINOIS FED. AID PROJECT		CONTRACT NO. 76624	



SEE THE GRADING PLAN FOR THE PROPOSED DITCH ALIGNMENT AND PROFILE

SANITARY SEWER TO BE RELOCATED BY THE VILLAGE OF GODFREY PRIOR TO CONSTRUCTION

PROPOSED BRIDGE APPROACH PAVEMENTS, GUARDRAIL, AND BRIDGE APPROACH PAVEMENT DRAINS TO BE DONE BY OTHERS

SECTION 60-15 FAP 310 BY OTHERS

STA 39+838 (SKEW = 35° RT AH)  
 PROPOSED PIPE CULVERT, RCCP, TYPE 7, 1.800 m Ø X 116.0 m  
 USFL 184.020, STA 39+865.5, 39.3 m RT  
 DSFL 182.280, STA 39+799.0, 55.7 m LT  
 REINFORCED CONCRETE HEADWALLS - SEE DETAIL  
 DRAINAGE AREA = 40.15 ha  
 50 YR FLOW = 7.87 cms  
 100 YR FLOW = 9.49 cms

REVISIONS	
NAME	DATE

ILLINOIS DEPARTMENT OF TRANSPORTATION  
 PLAN  
 FAP 310 (IL 255)  
 SECTION 60-15-2 & 60-15HB-2  
 MADISON COUNTY

DRAWN BY EBB  
 CHECKED BY  
 DATE

IL 255 (FAP 310), STA 39+700 TO STA 40+050

12/7/2007

p:\00files\00024\d1111\planprofiles\plan015g01.dgn