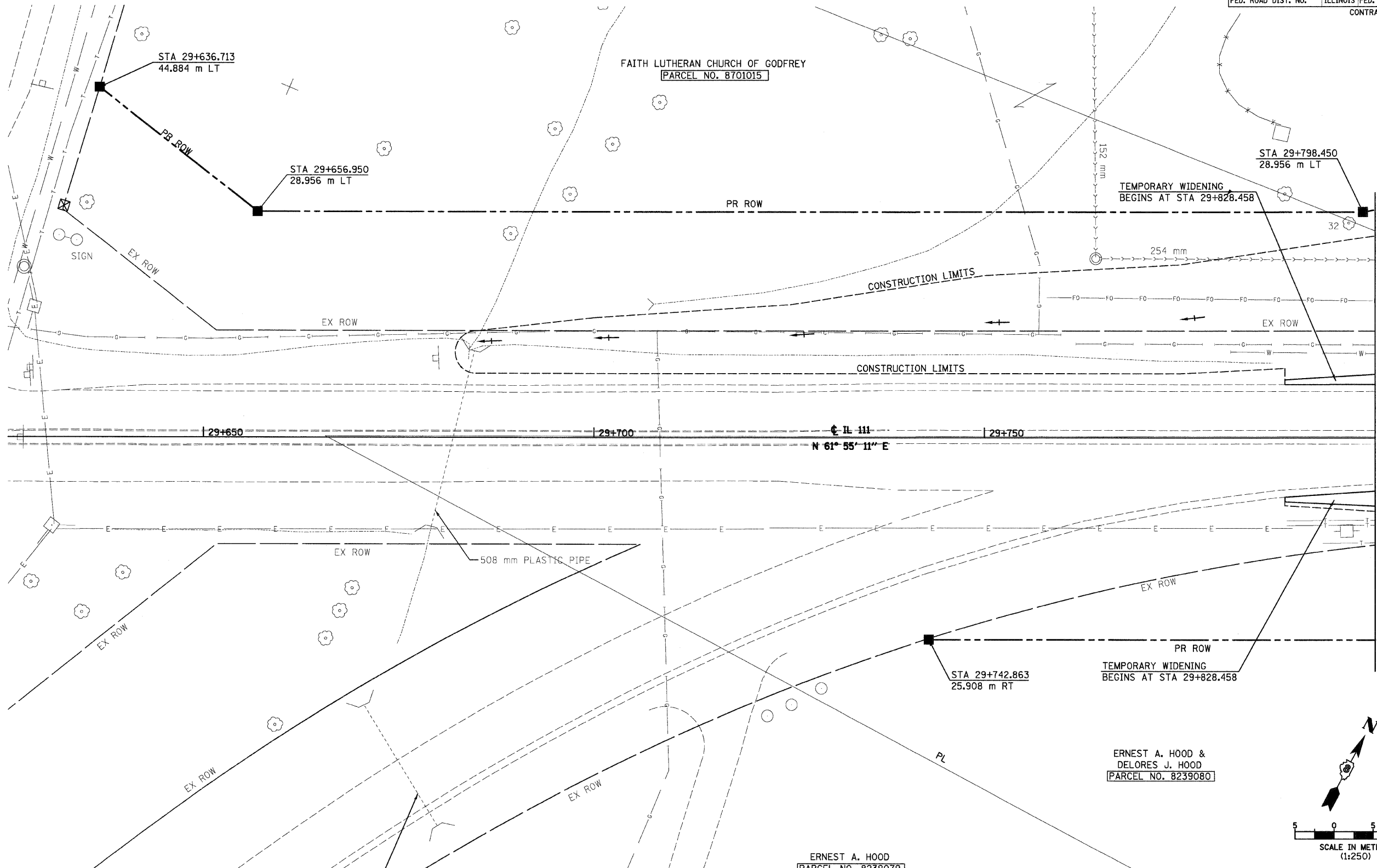


SW 1/4, SEC 14, T 6 N, R 10 W, 3RD PM

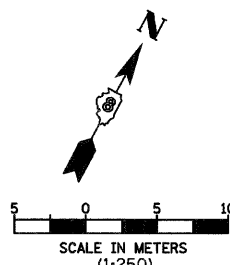
| F.A.P. RTE. | SECTION | COUNTY | TOTAL SHEETS | SHEET NO. |
|---------------------|----------------------|---------------------------|--------------|-----------|
| 310 | 60-15-2 60-15HB-2 | MADISON | 272 | 45 |
| STA. TO STA. | | ILLINOIS FED. AID PROJECT | | |
| FED. ROAD DIST. NO. | | CONTRACT NO. 76624 | | |



12/7/2007

p:\2007\1es\000024\4d1111\PlanProf\1es\plan015a001.dgn

MATCH LINE STA 29+800



| REVISIONS | |
|-----------|------|
| NAME | DATE |
| | |
| | |
| | |
| | |
| | |
| | |

ILLINOIS DEPARTMENT OF TRANSPORTATION
 PLAN
 FAP 310 (IL 255)
 SECTION 60-15-2 & 60-15HB-2
 MADISON COUNTY
 DRAWN BY EBB
 CHECKED BY
 DATE

SW 1/4, SEC 14, T 6 N, R 10 W, 3RD PM

IL 111, STA 29+625 TO STA 29+800