

F.A.P. RTE.	SECTION	COUNTY	TOTAL SHEETS	SHEET NO.
310	60-15-2 60-15HB-2	MADISON	272	47
STA.		TO STA.		
FED. ROAD DIST. NO.		ILLINOIS FED. AID PROJECT		
CONTRACT NO. 76624				

STA 0+590 (RAMP C SKEW 15° RT AH)
 PROPOSED PIPE CULVERT, RCCP, TYPE 1, ERS 900 mm Ø, 15.8 m
 USFL 186.235, STA 0+587.8, 8.5 m LT
 DSFL 186.165, STA 0+591.8, 6.7 m RT
 PRECAST REINFORCED CONCRETE FLARED END SECTION, ERS 900 mm, 2-EACH
 GRATING LT FOR CONCRETE FLARED END SECTION ERS 900 mm, 1-EACH
 DRAINAGE AREA = 2.44 ha
 50 YR FLOW = 0.62 cms
 100 YR FLOW = 0.76 cms

FAITH LUTHERAN CHURCH OF GODFREY
 PARCEL NO. 8701015

STA 29+843.489
 37.783 m LT

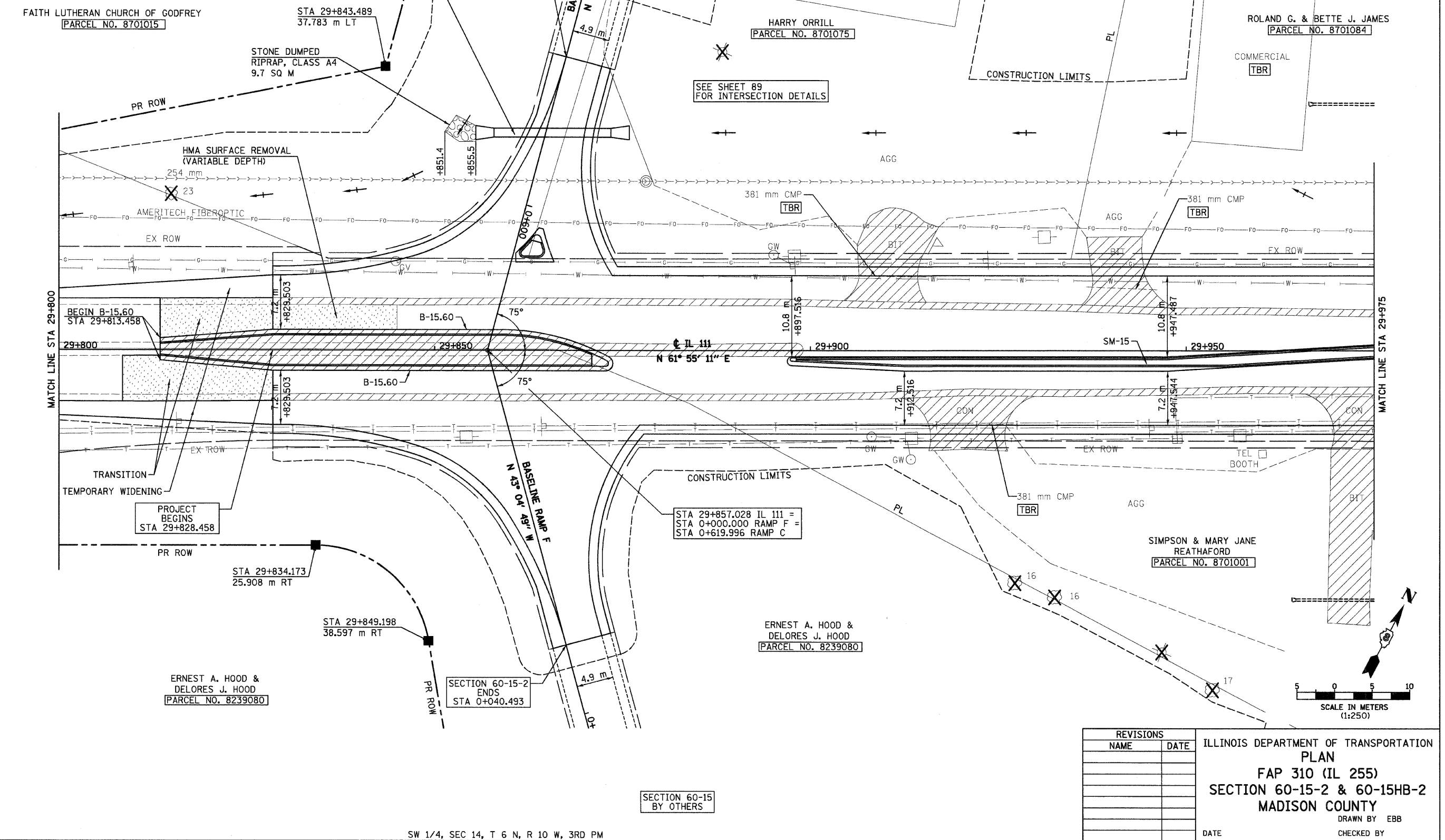
SECTION 60-15-2
 ENDS
 STA 0+579.503

SECTION 60-15
 BY OTHERS

HARRY ORRILL
 PARCEL NO. 8701075

ROLAND G. & BETTE J. JAMES
 PARCEL NO. 8701084

SEE SHEET 89
 FOR INTERSECTION DETAILS



MATCH LINE STA 29+800

MATCH LINE STA 29+975

BEGIN B-15.60
 STA 29+813.458

PROJECT
 BEGINS
 STA 29+828.458

STA 29+857.028 IL 111 =
 STA 0+000.000 RAMP F =
 STA 0+619.996 RAMP C

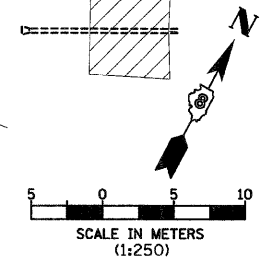
SIMPSON & MARY JANE
 REATHAFORD
 PARCEL NO. 8701001

ERNEST A. HOOD &
 DELORES J. HOOD
 PARCEL NO. 8239080

ERNEST A. HOOD &
 DELORES J. HOOD
 PARCEL NO. 8239080

SECTION 60-15-2
 ENDS
 STA 0+040.493

SECTION 60-15
 BY OTHERS



REVISIONS	
NAME	DATE

ILLINOIS DEPARTMENT OF TRANSPORTATION
 PLAN
 FAP 310 (IL 255)
 SECTION 60-15-2 & 60-15HB-2
 MADISON COUNTY
 DRAWN BY EBB
 CHECKED BY
 DATE

IL 111, STA 29+800 TO STA 29+975

12/7/2007

p:\2007\iles\000024\dl1111\PlanProf\iles\plan015c01.dgn

SW 1/4, SEC 14, T 6 N, R 10 W, 3RD PM