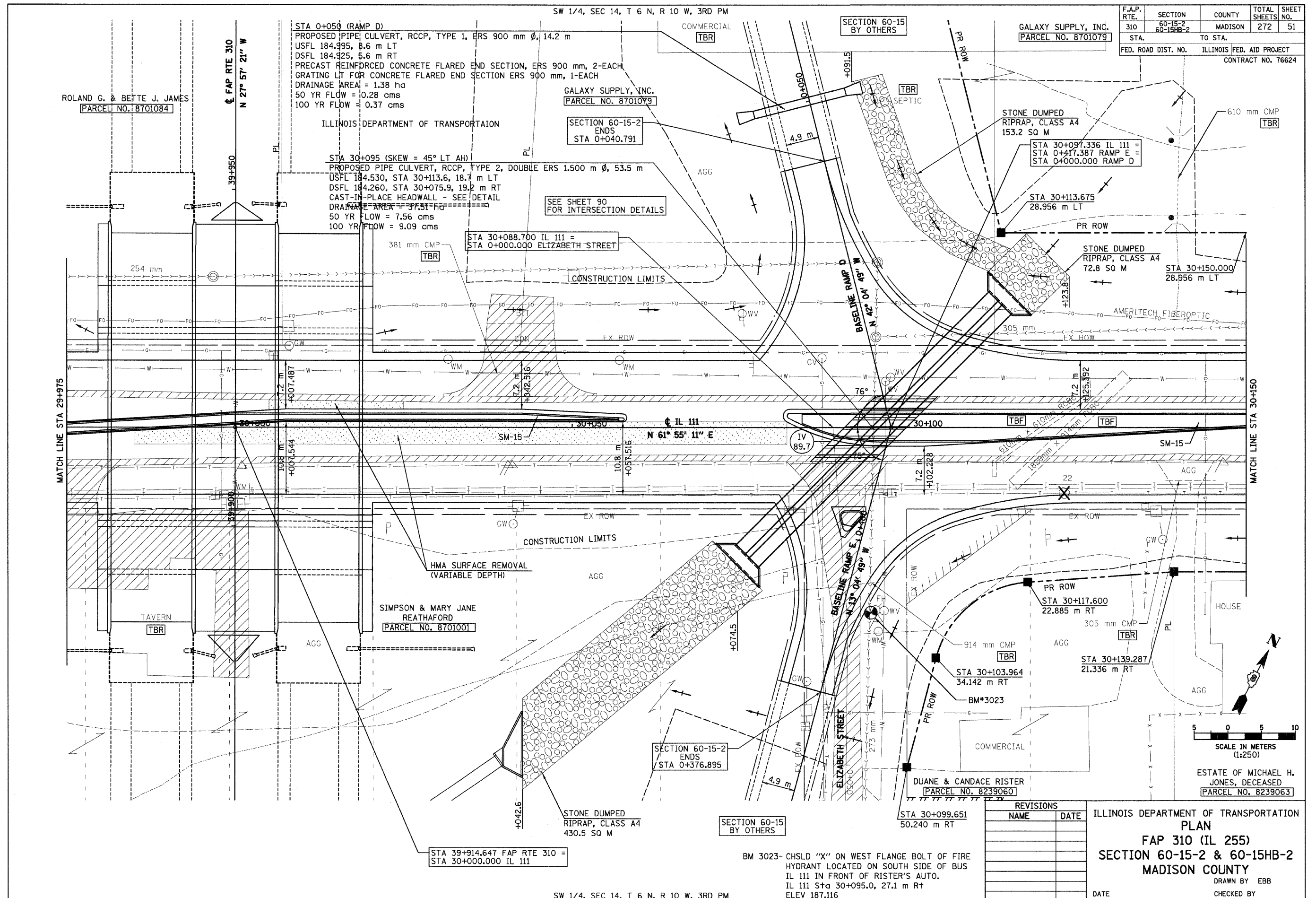


12/7/2007

p:\06\files\2002024\d1111\Plan\Prof\files\plan015c02.dgn



F.A.P. RTE.	SECTION	COUNTY	TOTAL SHEETS	SHEET NO.
310	60-15-2 60-15HB-2	MADISON	272	51
STA.		TO STA.		
FED. ROAD DIST. NO.		ILLINOIS FED. AID PROJECT		
CONTRACT NO. 76624				

REVISIONS	
NAME	DATE

ILLINOIS DEPARTMENT OF TRANSPORTATION
PLAN
FAP 310 (IL 255)
SECTION 60-15-2 & 60-15HB-2
MADISON COUNTY
 DRAWN BY EBB
 CHECKED BY
 DATE

BM 3023- CHSLD "X" ON WEST FLANGE BOLT OF FIRE HYDRANT LOCATED ON SOUTH SIDE OF BUS IL 111 IN FRONT OF RISTER'S AUTO. IL 111 Sta 30+095.0, 27.1 m Rt ELEV 187.116

SW 1/4, SEC 14, T 6 N, R 10 W, 3RD PM

STA 39+914.647 FAP RTE 310 =
 STA 30+000.000 IL 111

SEE SHEET 90
 FOR INTERSECTION DETAILS

STA 30+088.700 IL 111 =
 STA 0+000.000 ELIZABETH STREET

STA 30+095 (SKEW = 45° LT AH)
 PROPOSED PIPE CULVERT, RCCP, TYPE 2, DOUBLE ERS 1.500 m Ø, 53.5 m
 USFL 184.530, STA 30+113.6, 18.7 m LT
 DSFL 184.260, STA 30+075.9, 19.2 m RT
 CAST-IN-PLACE HEADWALL - SEE DETAIL
 DRAINAGE AREA = 37.51 ha
 50 YR FLOW = 7.56 cms
 100 YR FLOW = 9.09 cms

STA 0+050 (RAMP D)
 PROPOSED PIPE CULVERT, RCCP, TYPE 1, ERS 900 mm Ø, 14.2 m
 USFL 184.995, 8.6 m LT
 DSFL 184.925, 8.6 m RT
 PRECAST REINFORCED CONCRETE FLARED END SECTION, ERS 900 mm, 2-EACH
 GRATING LT FOR CONCRETE FLARED END SECTION ERS 900 mm, 1-EACH
 DRAINAGE AREA = 1.38 ha
 50 YR FLOW = 0.28 cms
 100 YR FLOW = 0.37 cms

ROLAND G. & BETTE J. JAMES
 PARCEL NO. 8701084

GALAXY SUPPLY, INC.
 PARCEL NO. 8701079

ILLINOIS DEPARTMENT OF TRANSPORTATION

GALAXY SUPPLY, INC.
 PARCEL NO. 8701079

SECTION 60-15-2
 ENDS
 STA 0+040.791

SECTION 60-15
 BY OTHERS

STONE DUMPED
 RIPRAP, CLASS A4
 153.2 SQ M

STA 30+097.336 IL 111 =
 STA 0+417.387 RAMP E =
 STA 0+000.000 RAMP D

STA 30+113.675
 28.956 m LT

STONE DUMPED
 RIPRAP, CLASS A4
 72.8 SQ M

STA 30+150.000
 28.956 m LT

381 mm CMP
 TBR

CONSTRUCTION LIMITS

BASELINE RAMP D
 N 42° 04' 49" W

AMERITECH FIBEROPTIC

IL 111
 N 61° 55' 11" E

CONSTRUCTION LIMITS

HMA SURFACE REMOVAL
 (VARIABLE DEPTH)

SIMPSON & MARY JANE
 REATHAFORD
 PARCEL NO. 8701001

BASELINE RAMP E
 N 13° 04' 49" W

PR ROW
 STA 30+117.600
 22.885 m RT

914 mm CMP
 TBR

STA 30+103.964
 34.142 m RT

BM*3023

305 mm CMP
 TBR

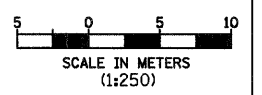
STA 30+139.287
 21.336 m RT

SECTION 60-15-2
 ENDS
 STA 0+376.895

SECTION 60-15
 BY OTHERS

STA 30+099.651
 50.240 m RT

STONE DUMPED
 RIPRAP, CLASS A4
 430.5 SQ M



ESTATE OF MICHAEL H. JONES, DECEASED
 PARCEL NO. 8239063

MATCH LINE STA 30+150

MATCH LINE STA 29+975