

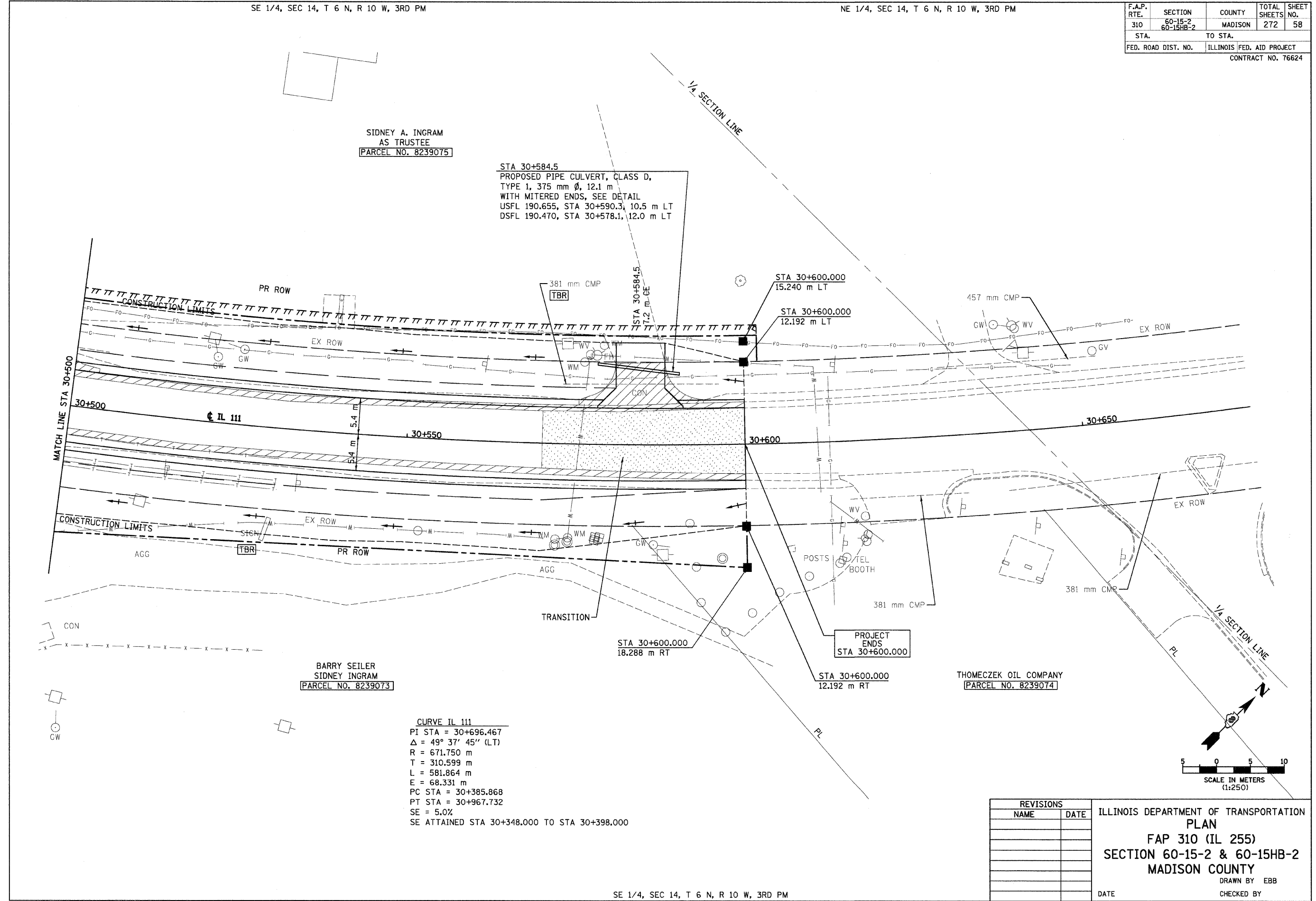
SE 1/4, SEC 14, T 6 N, R 10 W, 3RD PM

NE 1/4, SEC 14, T 6 N, R 10 W, 3RD PM

F.A.P. RTE.	SECTION	COUNTY	TOTAL SHEETS	SHEET NO.
310	60-15-2 60-15HB-2	MADISON	272	58
STA.		TO STA.		
FED. ROAD DIST. NO.		ILLINOIS FED. AID PROJECT		
CONTRACT NO. 76624				

SIDNEY A. INGRAM
AS TRUSTEE
PARCEL NO. 8239075

STA 30+584.5
PROPOSED PIPE CULVERT, CLASS D,
TYPE 1, 375 mm ϕ , 12.1 m
WITH MITERED ENDS, SEE DETAIL
USFL 190.655, STA 30+590.3, 10.5 m LT
DSFL 190.470, STA 30+578.1, 12.0 m LT

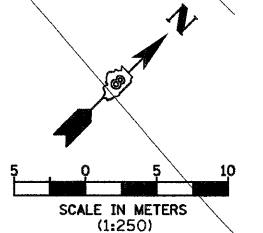


BARRY SEILER
SIDNEY INGRAM
PARCEL NO. 8239073

CURVE IL 111
PI STA = 30+696.467
 $\Delta = 49^\circ 37' 45''$ (LT)
R = 671.750 m
T = 310.599 m
L = 581.864 m
E = 68.331 m
PC STA = 30+385.868
PT STA = 30+967.732
SE = 5.0%
SE ATTAINED STA 30+348.000 TO STA 30+398.000

PROJECT
ENDS
STA 30+600.000

THOME CZEK OIL COMPANY
PARCEL NO. 8239074



REVISIONS	
NAME	DATE

ILLINOIS DEPARTMENT OF TRANSPORTATION
PLAN
 FAP 310 (IL 255)
 SECTION 60-15-2 & 60-15HB-2
 MADISON COUNTY
 DRAWN BY EBB
 CHECKED BY
 DATE

SE 1/4, SEC 14, T 6 N, R 10 W, 3RD PM

IL 111, STA 30+500 TO STA 30+675

12/7/2007

p:\00files\000024\d1111\PlanProfiles\plan015c05.dgn