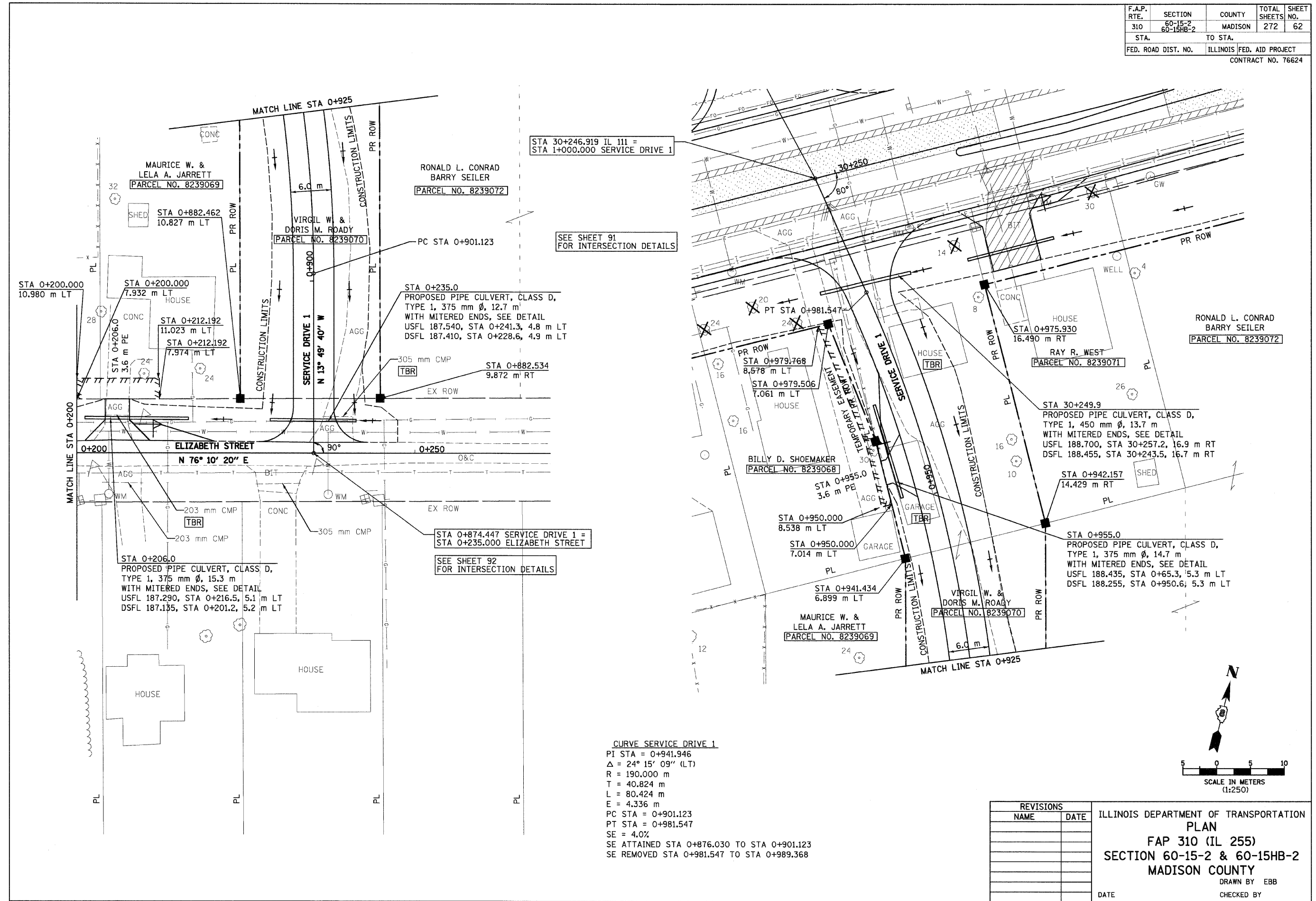


F.A.P. RTE.	SECTION	COUNTY	TOTAL SHEETS	SHEET NO.
310	60-15-2 60-15HB-2	MADISON	272	62
STA.		TO STA.		
FED. ROAD DIST. NO.		ILLINOIS FED. AID PROJECT		
CONTRACT NO. 76624				

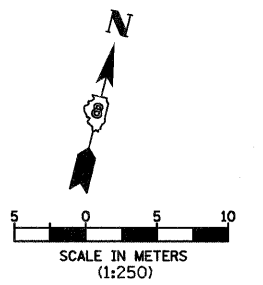


STA 30+246.919 IL 111 =  
STA 1+000.000 SERVICE DRIVE 1

SEE SHEET 91  
FOR INTERSECTION DETAILS

STA 0+874.447 SERVICE DRIVE 1 =  
STA 0+235.000 ELIZABETH STREET  
SEE SHEET 92  
FOR INTERSECTION DETAILS

**CURVE SERVICE DRIVE 1**  
 PI STA = 0+941.946  
 $\Delta = 24^\circ 15' 09''$  (LT)  
 R = 190.000 m  
 T = 40.824 m  
 L = 80.424 m  
 E = 4.336 m  
 PC STA = 0+901.123  
 PT STA = 0+981.547  
 SE = 4.0%  
 SE ATTAINED STA 0+876.030 TO STA 0+901.123  
 SE REMOVED STA 0+981.547 TO STA 0+989.368



REVISIONS	
NAME	DATE

ILLINOIS DEPARTMENT OF TRANSPORTATION  
**PLAN**  
**FAP 310 (IL 255)**  
**SECTION 60-15-2 & 60-15HB-2**  
**MADISON COUNTY**  
 DRAWN BY EBB  
 CHECKED BY  
 DATE  
 ELIZABETH STREET & SERVICE DRIVE 1

12/7/2007

p:\00f\iles\000024\di1111\PlanProf\iles\plan015e07.dgn