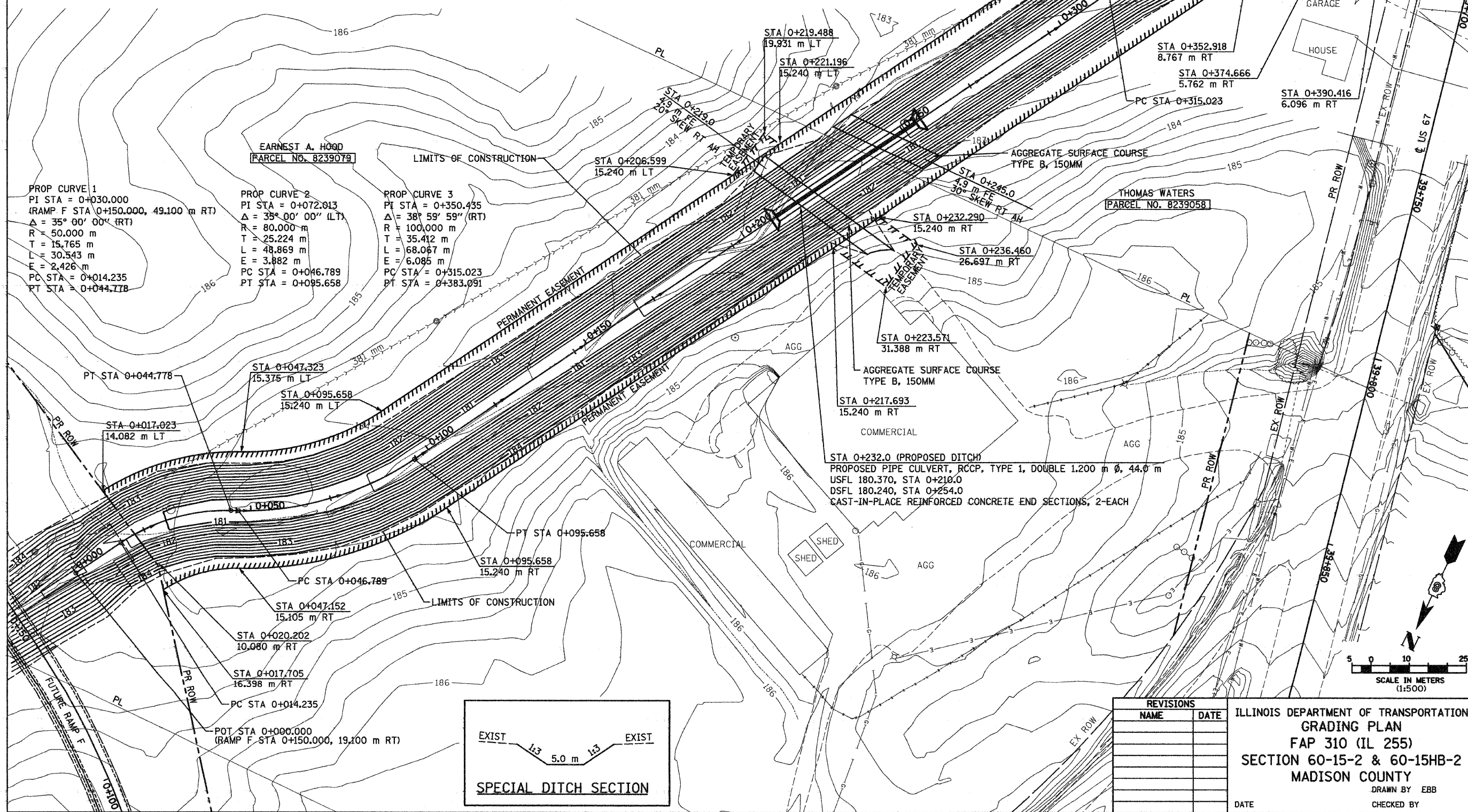


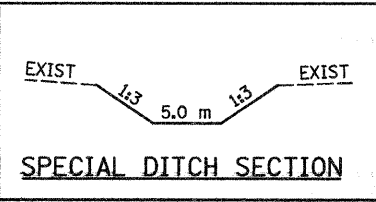
F.A.P. RTE.	SECTION	COUNTY	TOTAL SHEETS	SHEET NO.
310	60-15-2 60-15HB-2	MADISON	272	87
STA.	TO STA.			
FED. ROAD DIST. NO.	ILLINOIS	FED. AID PROJECT	CONTRACT NO. 76694	



**PROP CURVE 1**  
PI STA = 0+030.000  
(RAMP F STA 0+150.000, 49.100 m RT)  
Δ = 35° 00' 00" (RT)  
R = 50.000 m  
T = 15.765 m  
L = 30.543 m  
E = 2.426 m  
PC STA = 0+014.235  
PT STA = 0+044.778

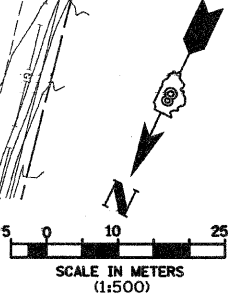
**PROP CURVE 2**  
PI STA = 0+072.013  
Δ = 35° 00' 00" (LT)  
R = 80.000 m  
T = 25.224 m  
L = 48.869 m  
E = 3.882 m  
PC STA = 0+046.789  
PT STA = 0+095.658

**PROP CURVE 3**  
PI STA = 0+350.435  
Δ = 38° 59' 59" (RT)  
R = 100.000 m  
T = 35.412 m  
L = 68.067 m  
E = 6.085 m  
PC STA = 0+315.023  
PT STA = 0+383.091



REVISIONS	
NAME	DATE

ILLINOIS DEPARTMENT OF TRANSPORTATION  
GRADING PLAN  
FAP 310 (IL 255)  
SECTION 60-15-2 & 60-15HB-2  
MADISON COUNTY  
DRAWN BY EBB  
CHECKED BY  
DATE



5/13/2008  
p:\00f\1es\000024\dil\111\Detail\Misc\Grading\lan015g-02.dgn