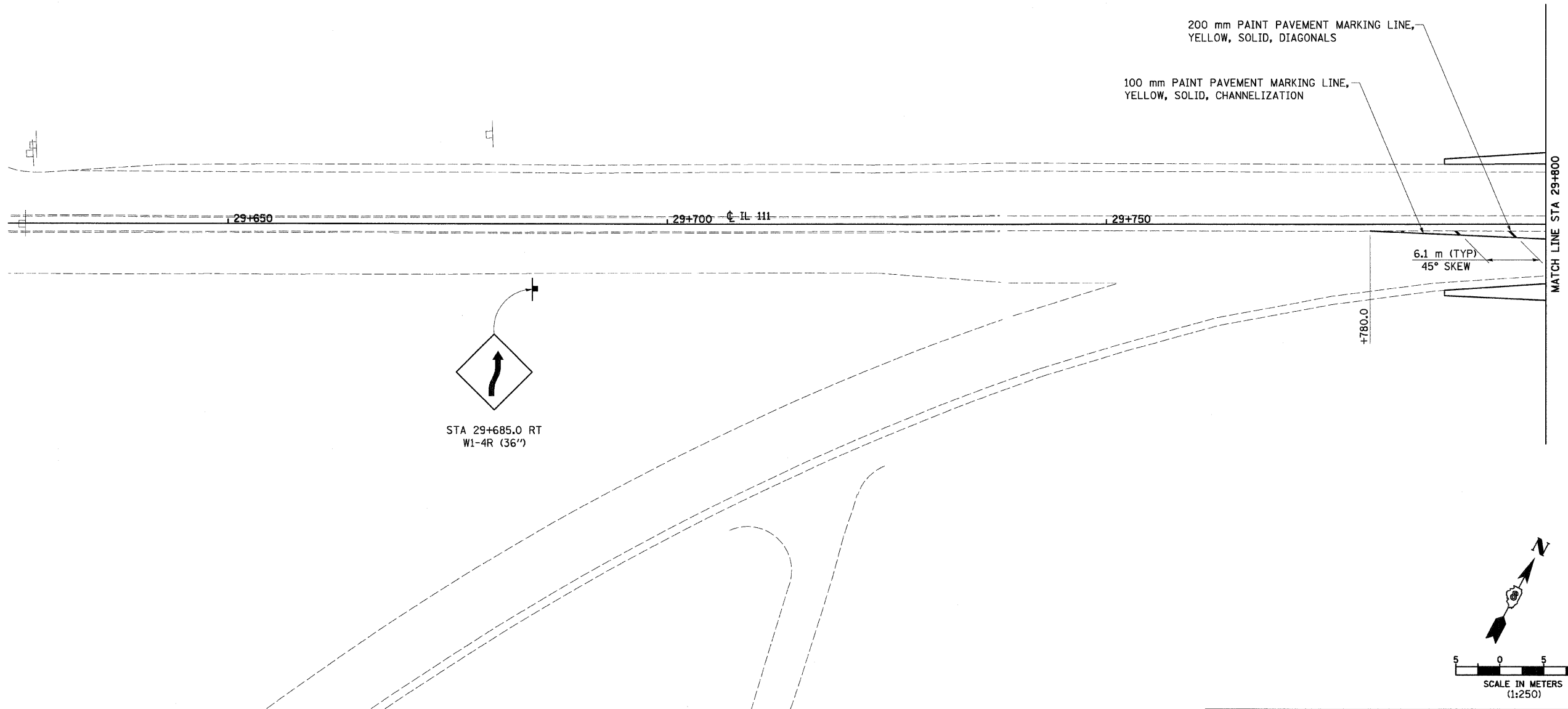


SW 1/4, SEC 14, T 6 N, R 10 W, 3RD PM

F.A.P. RTE.	SECTION	COUNTY	TOTAL SHEETS	SHEET NO.
310	60-15-2 60-15HB-2	MADISON	272	93
STA.		TO STA.		
FED. ROAD DIST. NO.		ILLINOIS FED. AID PROJECT		
CONTRACT NO. 76624				



12/7/2007

p:\00f.1es\000024\dl111\pvm\mark\ks\pvm\015c00.dgn

STA 29+685.0 RT
W1-4R (36')

REVISIONS	
NAME	DATE

ILLINOIS DEPARTMENT OF TRANSPORTATION
PAVEMENT MARKING & SIGNING
FAP 310 (IL 255)
SECTION 60-15-2 & 60-15HB-2
MADISON COUNTY
DRAWN BY EBB
CHECKED BY
DATE

SW 1/4, SEC 14, T 6 N, R 10 W, 3RD PM

IL 111, STA 29+625 TO STA 29+800