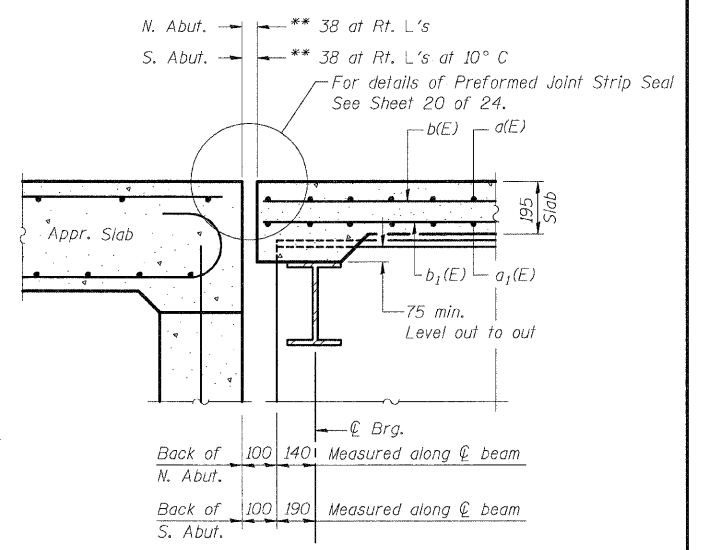
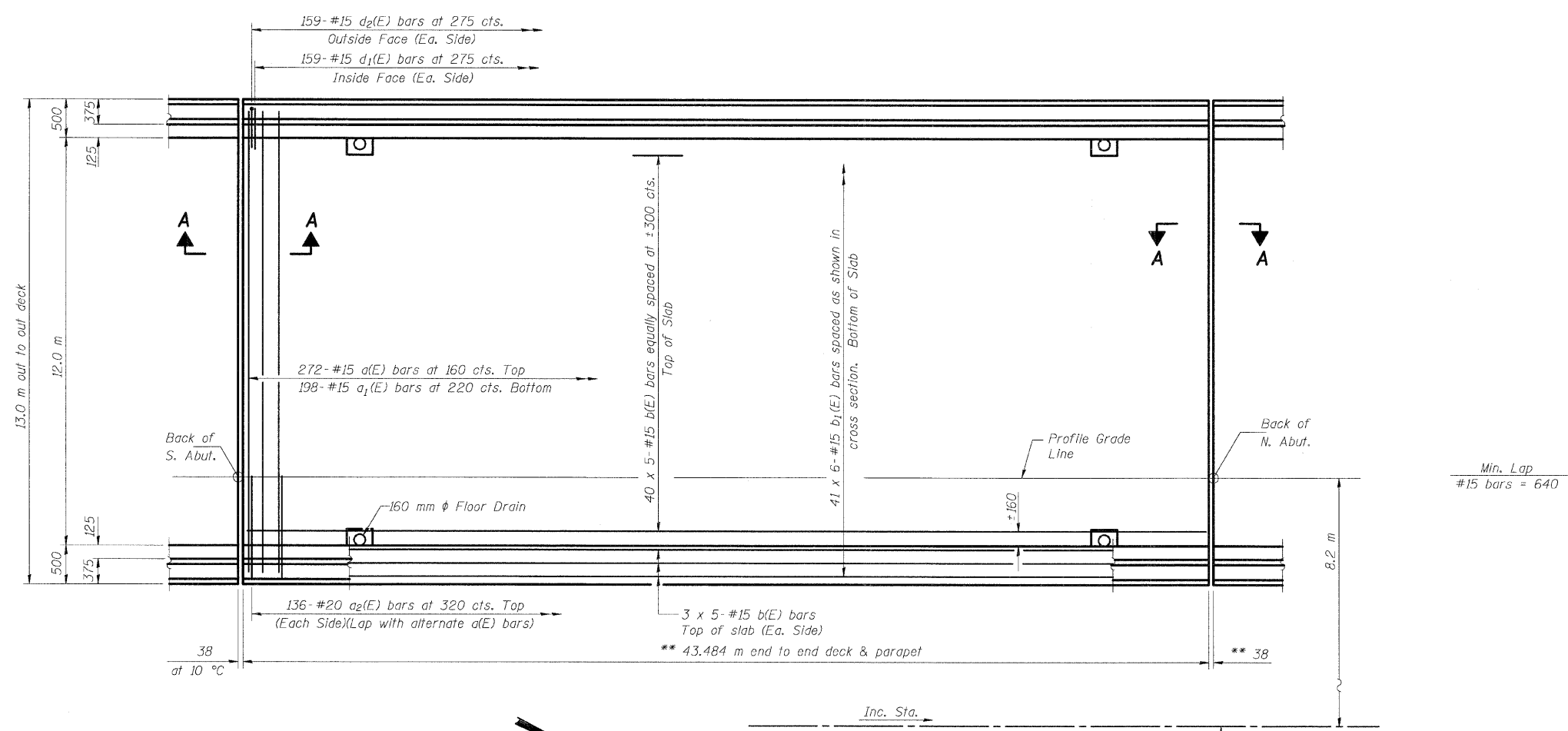


12/17/2007 1:38:53 PM
 ps:\2007\files\06002\2\4\1111\bridge-plans\060-0330superstructure.dgn

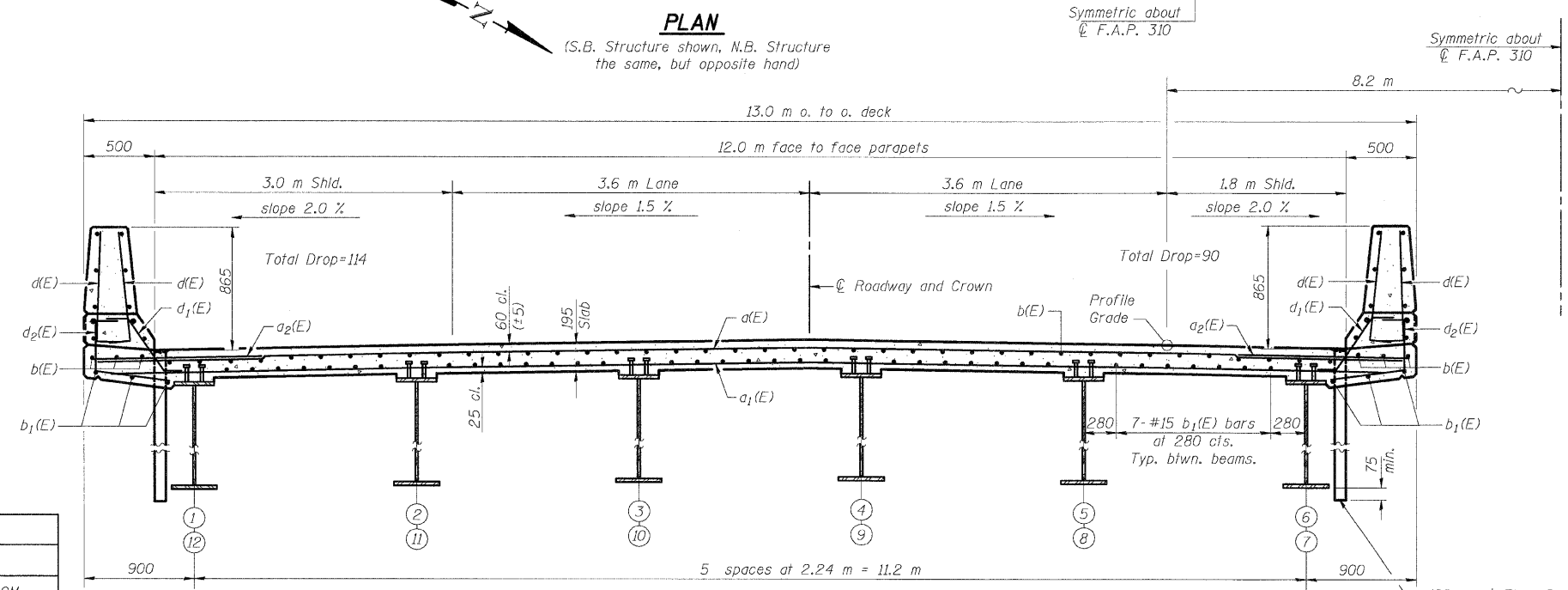
ROUTE NO.	SECTION	COUNTY	TOTAL SHEETS	SHEET NO.
F.A.P. 310	*	MADISON	272	106
FED. ROAD DIST. NO. 7		ILLINOIS		FED. AID PROJECT
* 60-15HB-2		CONTRACT NO. 76624		

SHEET NO. 5
24 SHEETS



PLAN

(S.B. Structure shown, N.B. Structure the same, but opposite hand)



CROSS SECTION

(Looking North)
 (S.B. Structure shown, N.B. Structure the same, but opposite hand)

DESIGNED	ADL
CHECKED	WLW
DRAWN	ADL/DGM
CHECKED	WLW

Notes: See Sheet 6 of 24 for superstructure details and Bill of Materials. Reinforcement bars designated (E) shall be epoxy coated. Bars indicated thus 20 x 3-#15 etc. indicates 20 lines of bars with 3 lengths per line.
 See Sheet 6 of 24 for parapet reinforcement.
 ** Dimensions are based on a Rolled Rail Strip Seal Joint. If the contractor elects to use the Welded Rail Strip Seal Joint, deck dimensions may require adjustments to satisfy the details on Sheet 20 of 24.

SUPERSTRUCTURE
FAP RTE. 310 (IL RTE. 255) OVER
IL RTE 111
SECTION 60-15HB-2
MADISON COUNTY
STATION 39+914.647
SN 060-0330 (NB) & 060-0331 (SB)