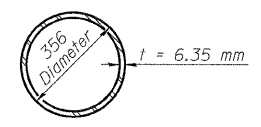
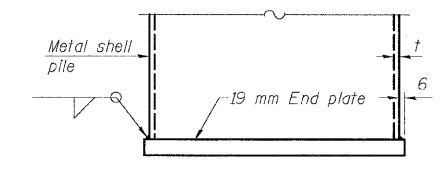


12/7/2007 1:44:54 PM

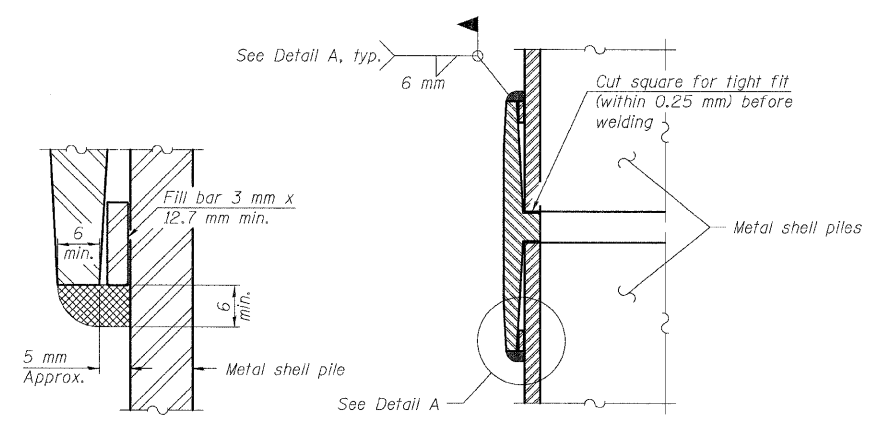
ROUTE NO.	SECTION	COUNTY	SHEET NO.	SHEET TOTAL
310	*	MADISON	272	119
SHEET NO. 18				
24 SHEETS				
* 60-15HB-2 CONTRACT NO. 76624				



**METAL SHELL PILE**



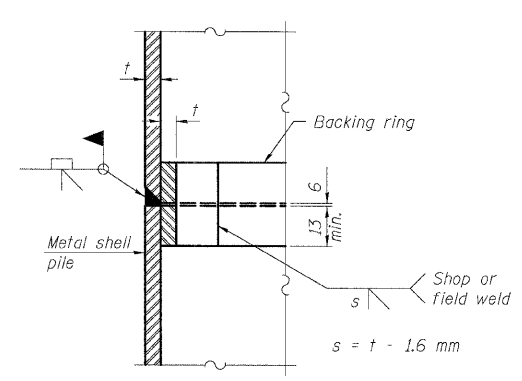
**END PLATE ATTACHMENT**



**DETAIL A**

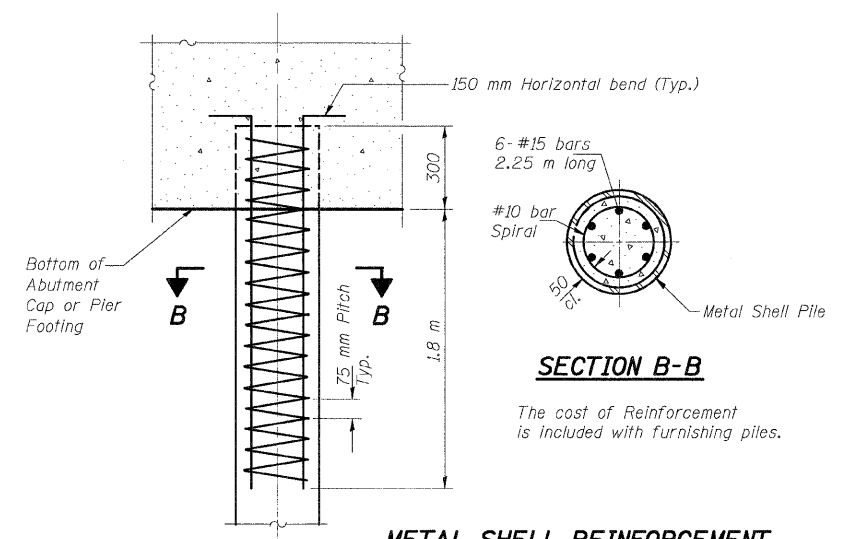
Notes:  
 The 3 x 12.7 mm min. fill bar may be constructed of 2 bars with a 3 mm max. gap between them.  
 Pile segments shall be driven to solid contact with splicer before welding.

**WELDED COMMERCIAL SPLICE**



**COMPLETE PENETRATION WELD SPLICE**

Backing ring made from pile shell. Remove segment to allow reducing circumference and vertically rejoin with partial joint penetration weld.



**SECTION B-B**

The cost of Reinforcement is included with furnishing piles.

**METAL SHELL REINFORCEMENT AT ABUTMENTS**

Note:  
 The metal shell piles shall be according to ASTM A 252 Grade 3.

DESIGNED	ADL
CHECKED	WLW
DRAWN	ADL/DGM
CHECKED	WLW

**PILE DETAILS**  
 FAP RTE. 310 (IL RTE. 255) OVER  
 IL RTE 111  
 SECTION 60-15HB-2  
 MADISON COUNTY  
 STATION 39+914.647  
 SN 060-0330 (NB) & 060-0331 (SB)