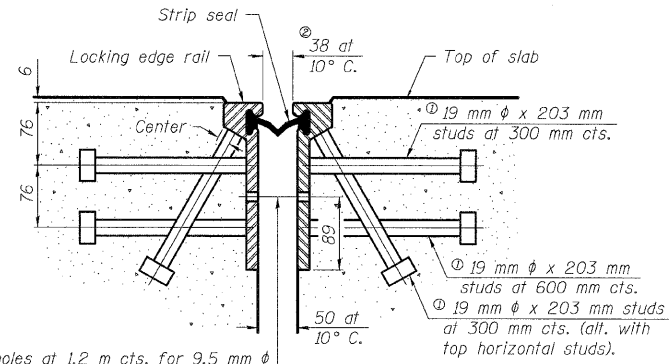


12/7/2007 1:44:54 PM p:\2007\files\020002\adl\111\br-edge.plans\060-0330\mso.dgn

① Granular or solid flux filled headed studs conforming to Article 1006.32 of the Std. Specs., automatically end welded.

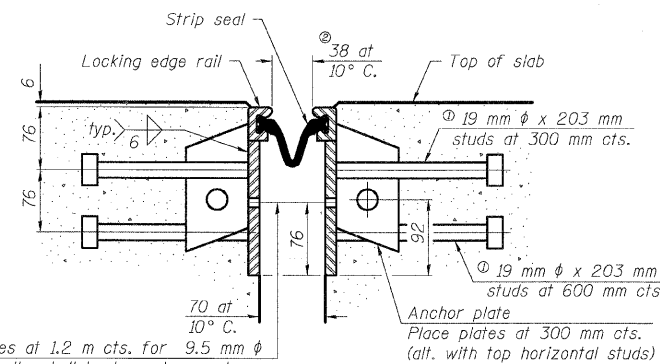
② When joint is fixed, dimension is set at 38 mm.

ROUTE NO.	SECTION	COUNTY	TOTAL SHEETS	SHEET NO.	SHEET NO. 20 24 SHEETS
310	*	MADISON	272	121	
FED. ROAD DIST. NO. 7		ILLINOIS	FED. AID PROJECT		
* 60-15HB-2 CONTRACT NO. 76624					



11 mm  $\phi$  holes at 1.2 m cts. for 9.5 mm  $\phi$  bolts. All bolts shall be burned, sawed, or chipped off flush with the plates after forms are removed, typ.

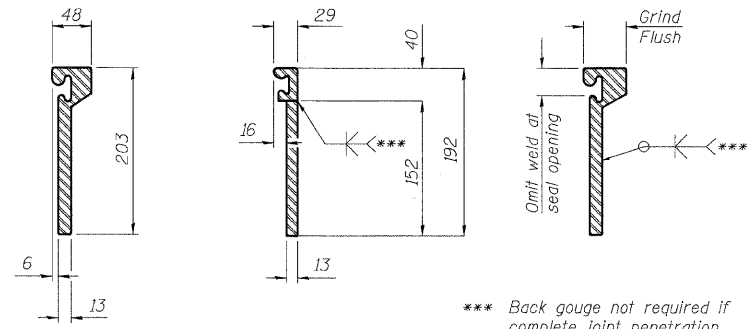
**SECTION THRU ROLLED RAIL JOINT**



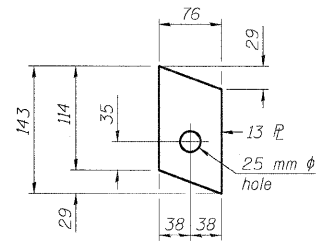
11 mm  $\phi$  holes at 1.2 m cts. for 9.5 mm  $\phi$  bolts. All bolts shall be burned, sawed, or chipped off flush with the plates after forms are removed, typ.

**SECTION THRU WELDED RAIL JOINT**

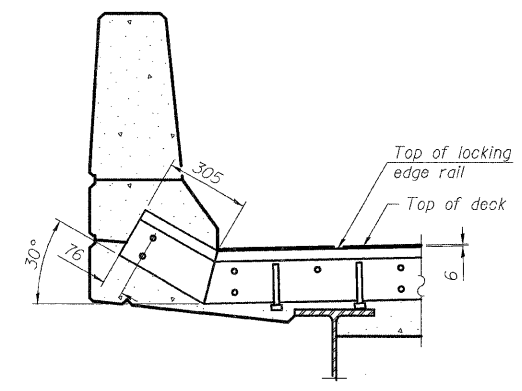
**Notes:**  
 The strip seal shall be made continuous and shall have a minimum thickness of 6 mm. The configuration of the strip seal shall match the configuration of the Locking Edge Rails. Open or "webbed" strip seal gland configurations are not permitted. The gland shall be sized for a maximum rated movement of 102 mm.  
 The height and thickness of the Locking Edge Rails shown are minimum dimensions. The actual configuration of the Locking Edge Rails and matching strip seal may vary from manufacturer to manufacturer. Flanged edge rails will not be allowed. Locking Edge Rails may be spliced at slope discontinuities and stage construction joints.  
 The manufacturer's recommended installation methods shall be followed.  
 The joint opening and deck dimensions detailed on the superstructure are based on a rolled rail expansion joint. If the Contractor elects to use the welded rail expansion joint, the opening and deck dimensions shall be modified according to the dimensions detailed on this sheet. Required modifications shall be made at no additional cost to the State.  
 All steel components shall be galvanized after fabrication according to Article 520.03 of the Standard Specifications.



**LOCKING EDGE RAILS**  
 ROLLED (EXTRUDED) RAIL      WELDED RAIL      LOCKING EDGE RAIL SPLICE  
 The inside of the locking edge rail groove shall be free of weld residue.



**ANCHOR PLATE (for welded rail)**



**AT PARAPET END TREATMENT**

**BILL OF MATERIAL**

Item	Unit	Total
Preformed Joint Strip Seal	m	50.5

DESIGNED	ADL
CHECKED	WLW
DRAWN	ADL/DGM
CHECKED	WLW

**PREFORMED JOINT STRIP SEAL**  
**FAP RTE. 310 (IL RTE. 255) OVER**  
**IL RTE 111**  
**SECTION 60-15HB-2**  
**MADISON COUNTY**  
**STATION 39+914.647**  
**SN 060-0330 (NB) & 060-0331 (SB)**