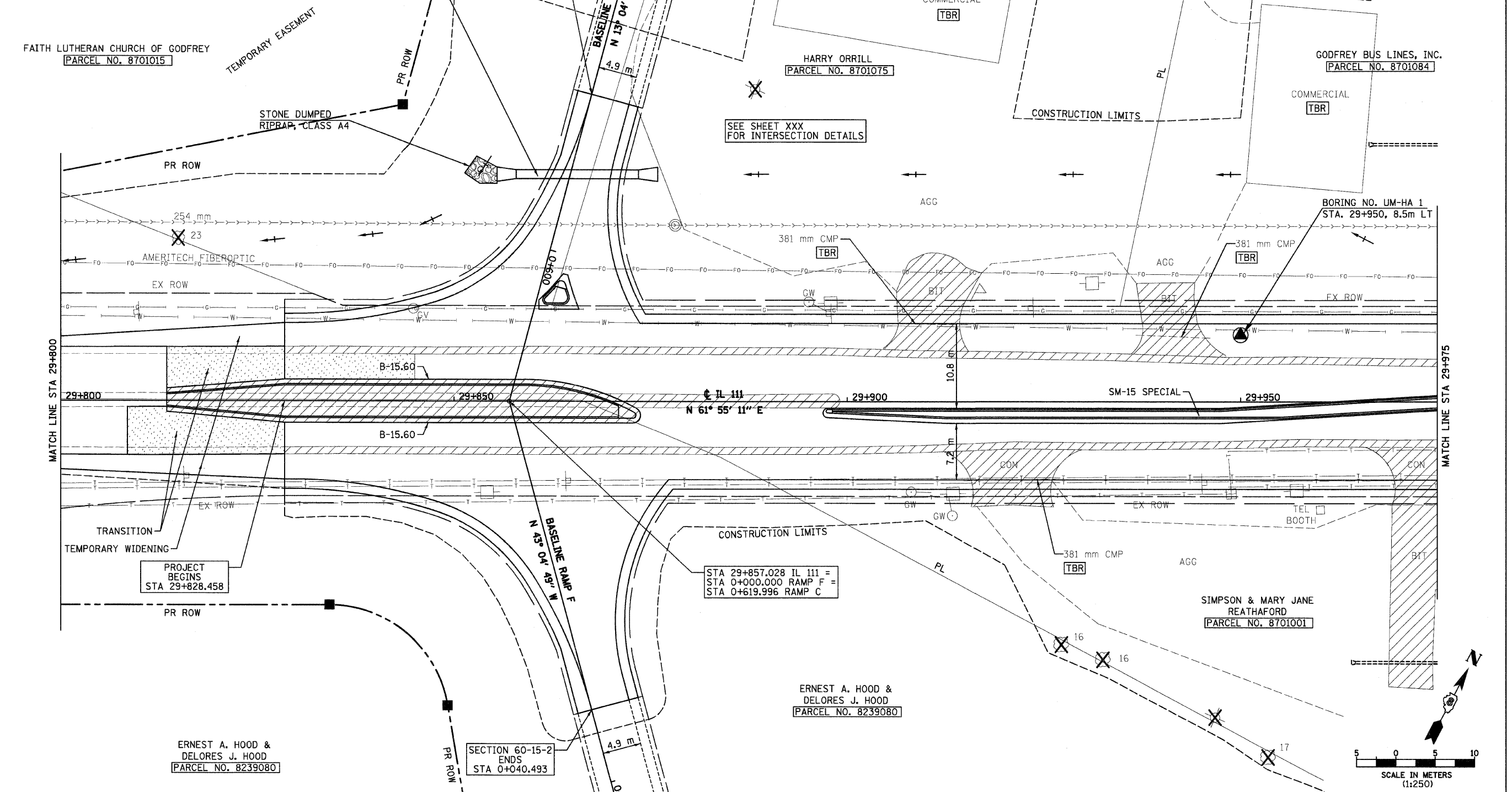


F.A.P. RTE.	SECTION	COUNTY	TOTAL SHEETS	SHEET NO.
310	60-15-2 60-15HB-2	MADISON	272	135
STA. TO STA.		ILLINOIS FED. AID PROJECT		
FED. ROAD DIST. NO.		CONTRACT NO. 76624		

STA 0+590 (RAMP C SKEW 15° RT AH)  
 PROPOSED PIPE CULVERT, RCCP, TYPE 1, ERS 900 mm Ø, 15.8 m  
 USFL 186.235, STA 0+587.8, 8.5 m LT  
 DSFL 186.165, STA 0+591.8, 6.7 m RT  
 PRECAST REINFORCED CONCRETE FLARED END SECTION, ERS 900 mm, 2-EACH  
 GRATING LT FOR CONCRETE FLARED END SECTION ERS 900 mm, 1-EACH  
 DRAINAGE AREA = 2.44 ha  
 50 YR FLOW = 0.62 cms  
 100 YR FLOW = 0.76 cms



MATCH LINE STA 29+800

MATCH LINE STA 29+975

29+800

29+850

29+900

29+950

PROJECT BEGINS  
STA 29+828.458

STA 29+857.028 IL 111 =  
STA 0+000.000 RAMP F =  
STA 0+619.996 RAMP C

SIMPSON & MARY JANE  
REATHAFORD  
PARCEL NO. 8701001

ERNEST A. HOOD &  
DELORES J. HOOD  
PARCEL NO. 8239080

ERNEST A. HOOD &  
DELORES J. HOOD  
PARCEL NO. 8239080

SECTION 60-15-2  
ENDS  
STA 0+040.493

SECTION 60-15  
BY OTHERS

SECTION 60-15-2  
ENDS  
STA 0+579.503

SECTION 60-15  
BY OTHERS

SOIL STRATA PLAN SHEETS ARE  
PROVIDED AS A REFERENCE FOR  
SOIL AND GROUNDWATER  
INFORMATION ONLY.

REVISIONS	
NAME	DATE

ILLINOIS DEPARTMENT OF TRANSPORTATION  
 SOIL STRATA PLAN  
 FAP 310 (IL 255)  
 SECTION 60-15-2 & 60-15HB-2  
 MADISON COUNTY  
 DRAWN BY EBB  
 CHECKED BY  
 DATE

12/7/2007

p:\00files\000024\d1111\soilstrata\plan015c01.dgn

SW 1/4, SEC 14, T 6 N, R 10 W, 3RD PM

IL 111, STA 29+800 TO STA 29+975