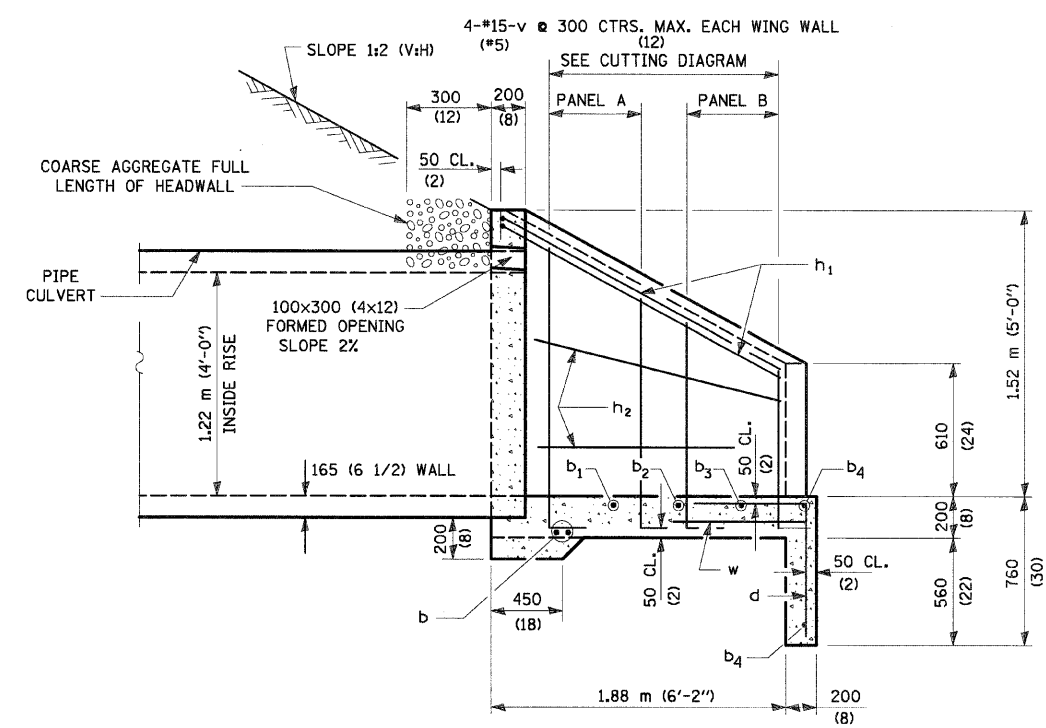
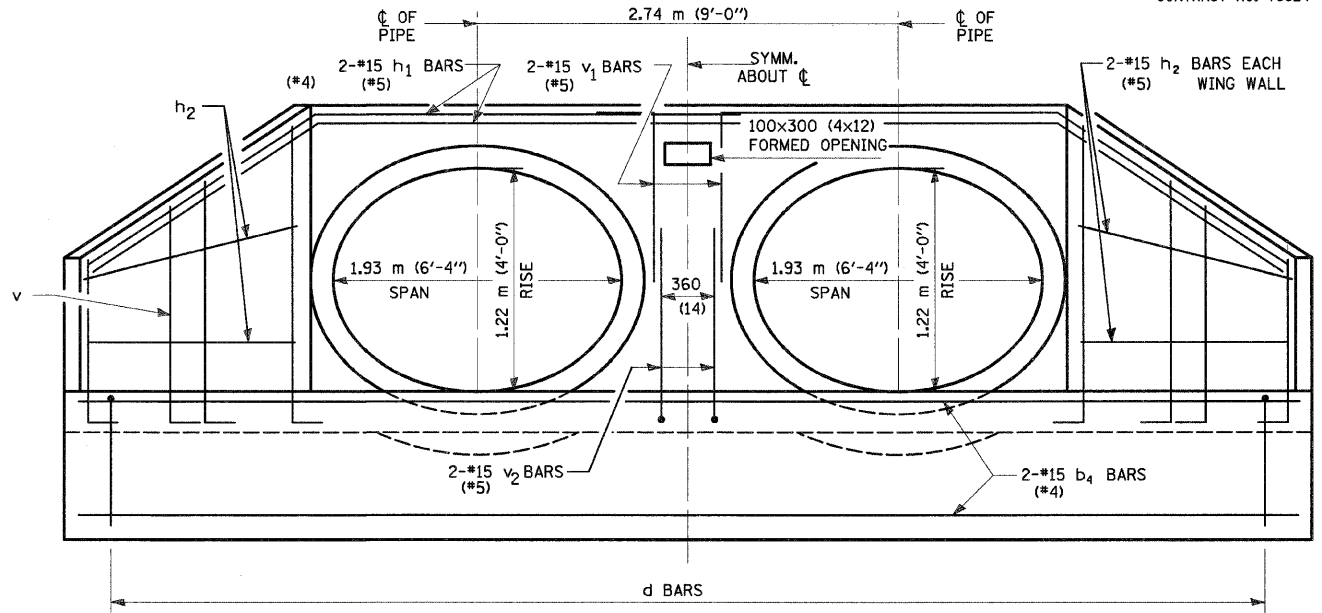


F.A.P. RTE.	SECTION	COUNTY	TOTAL SHEETS	SHEET NO.
310	60-15-2 60-15HB-2	MADISON	272	146
STA.	TO STA.			
FED. ROAD DIST. NO.	ILLINOIS FED. AID PROJECT			
CONTRACT NO. 76624				



SECTION A-A



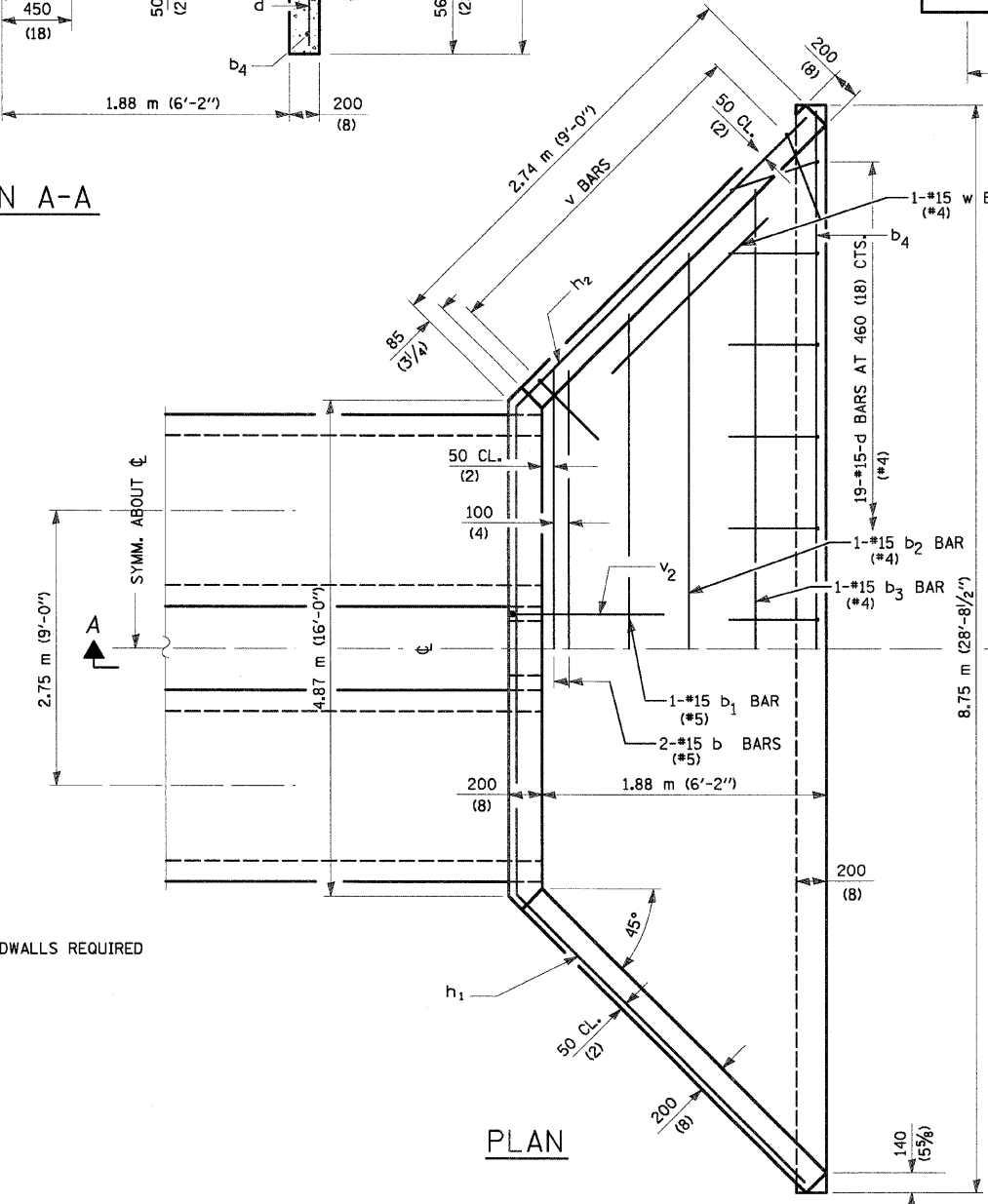
END ELEVATION

BILL OF MATERIAL

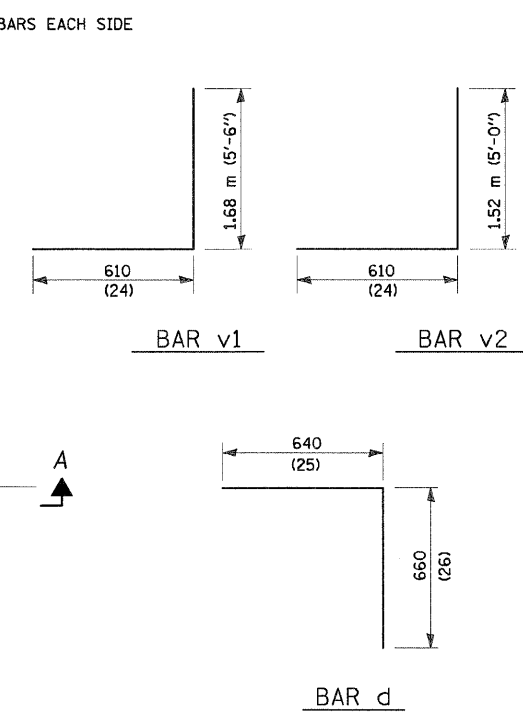
BAR	SIZE	NO.	LENGTH	SHAPE
b	No.15 (No.5)	2	5.23 m (17'-2")	▬
b1	(No.5)	1	6.07 m (19'-11")	▬
b2	(No.4)	1	6.83 m (22'-5")	▬
b3	(No.4)	1	7.90 m (25'-11")	▬
b4	(No.4)	2	8.51 m (27'-11")	▬
d	(No.4)	19	1.3 m (4'-3")	└┘
h1	(No.5)	2	10.40 m (34'-2")	▽
h2	(No.5)	4	2.67 m (8'-9")	▽
v	(No.5)	8	3.56 m (11'-8")	└┘
v1	(No.5)	2	2.29 m (7'-6")	└┘
v1	(No.5)	2	2.13 m (7'-0")	└┘
w	No.15 (No.4)	2	1.22 m (4'-0")	▬
CONCRETE HEADWALLS			m ³ (C.Y.)	5.8 (7.6)
REINFORCEMENT BARS			kg (Lbs.)	230 (420)

NOTES:

TABLE FOR ONE (1) HEADWALL ONLY. TWO (2) HEADWALLS REQUIRED
 BAR DIMENSIONS ARE OUT TO OUT.

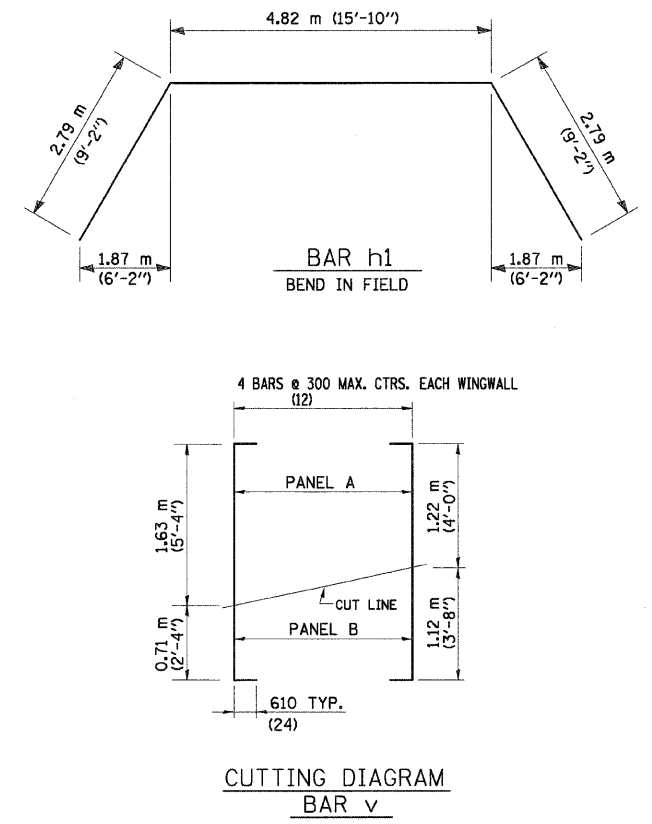


PLAN



NOTES:

CONCRETE HEADWALLS SHALL BE USED THROUGHOUT.
 EXPOSED EDGES SHALL BE BEVELED 20 (3/4).
 REINFORCEMENT BARS SHALL CONFORM TO THE REQUIREMENTS OF AASHTO M-31M, M-42M, M-53M, GRADE 400.
 ALL DIMENSIONS ARE IN MILLIMETERS (INCHES) UNLESS OTHERWISE SHOWN.
 NOT TO SCALE OR PROPER ORIENTATION.
 HEADWALL AT 0° SKEW TO CULVERT C.



CUTTING DIAGRAM BAR v

REVISIONS	
NAME	DATE

ILLINOIS DEPARTMENT OF TRANSPORTATION
CAST-IN-PLACE HEADWALLS
STATION 30+095
DOUBLE ERS 1500 mm (5'-0")
PIPE CULVERTS @ 45° SKEW
 DRAWN BY PTW
 CHECKED BY ADL
 DATE

12/7/2007

pt:\00f1\ies\002024\di1111\headwall\headwall30095.dgn