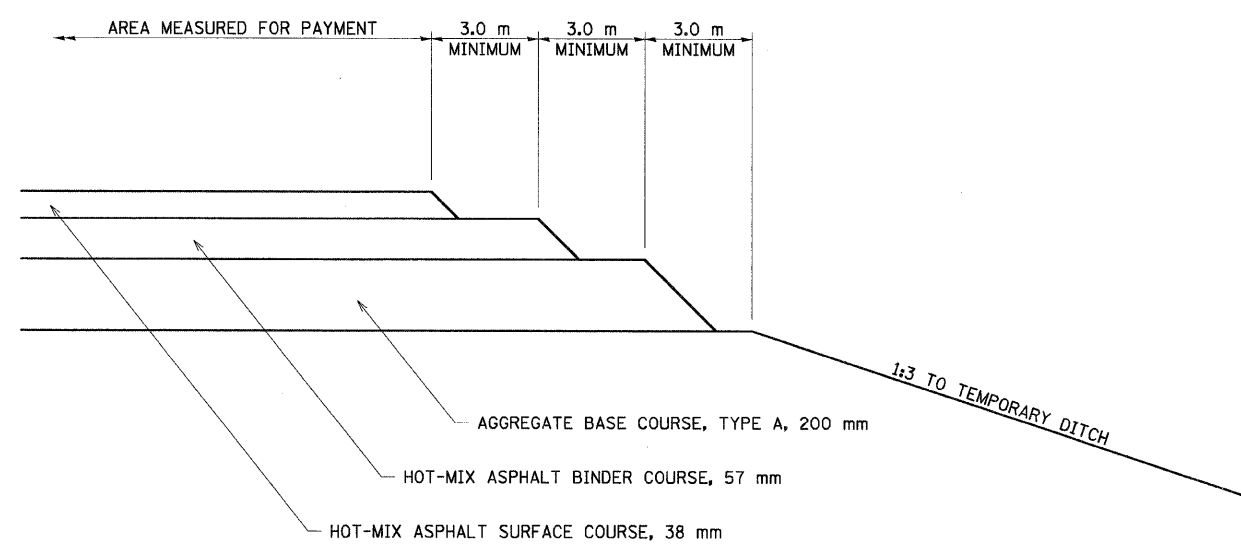
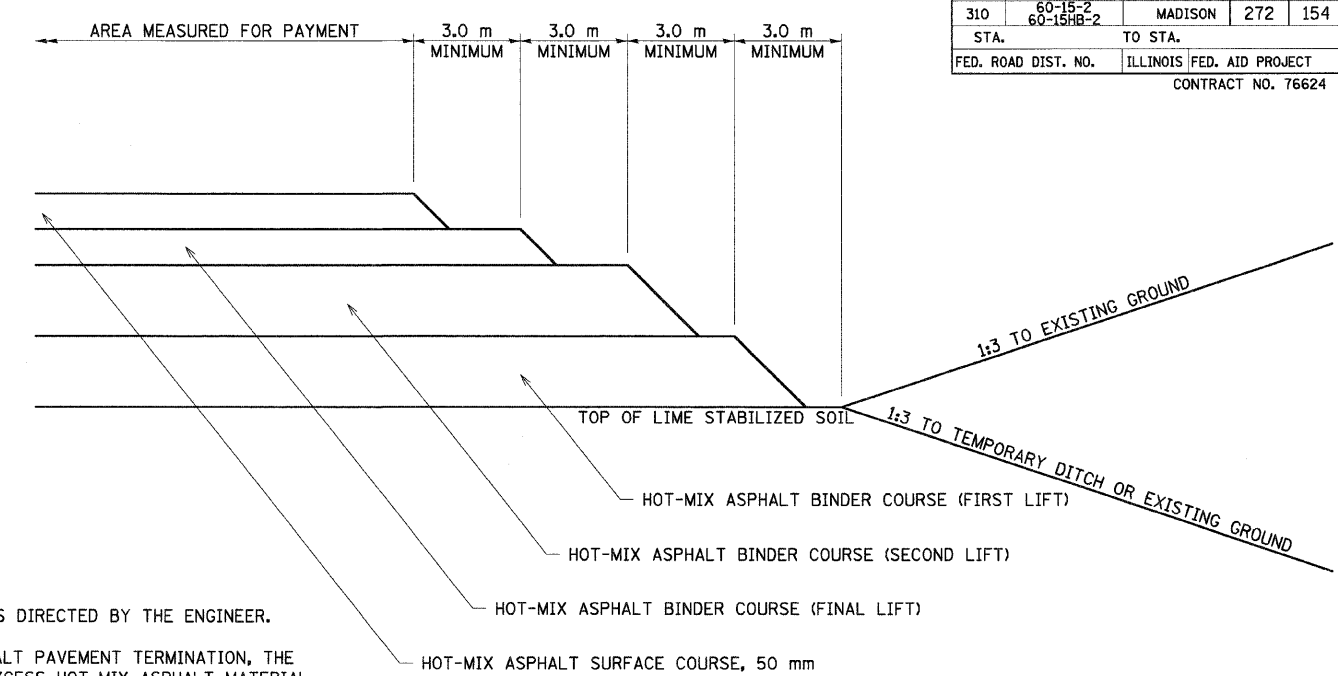


| | | | | |
|---------------------|----------------------|---------------------------|--------------|-----------|
| F.A.P. RTE. | SECTION | COUNTY | TOTAL SHEETS | SHEET NO. |
| 310 | 60-15-2 60-15HB-2 | MADISON | 272 | 154 |
| STA. | | TO STA. | | |
| FED. ROAD DIST. NO. | | ILLINOIS FED. AID PROJECT | | |
| CONTRACT NO. 76624 | | | | |

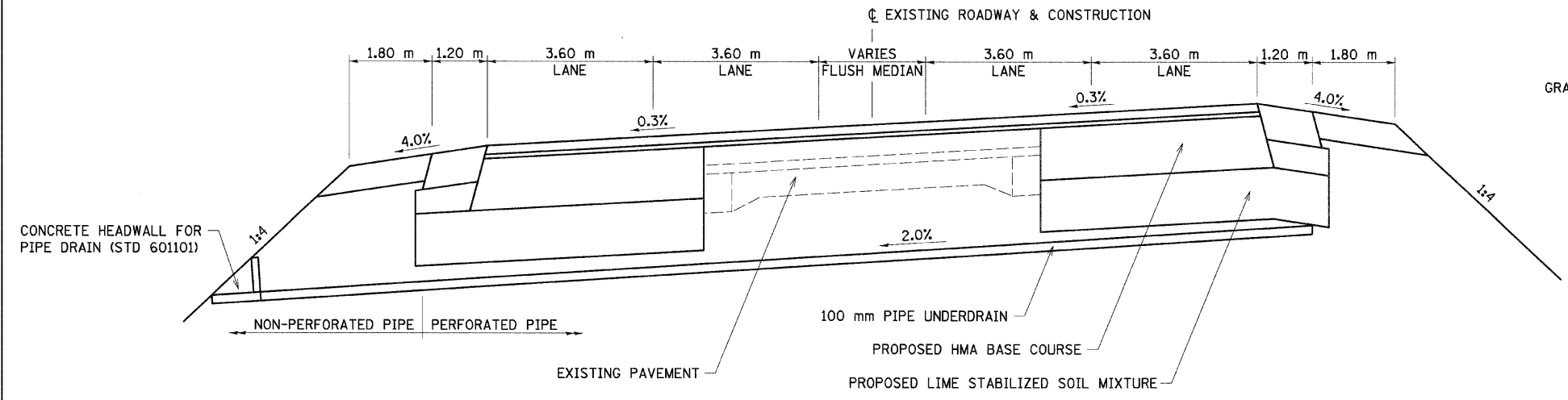


DETAIL OF PAVEMENT TERMINATION FOR ACCESS ROAD
NOT TO SCALE



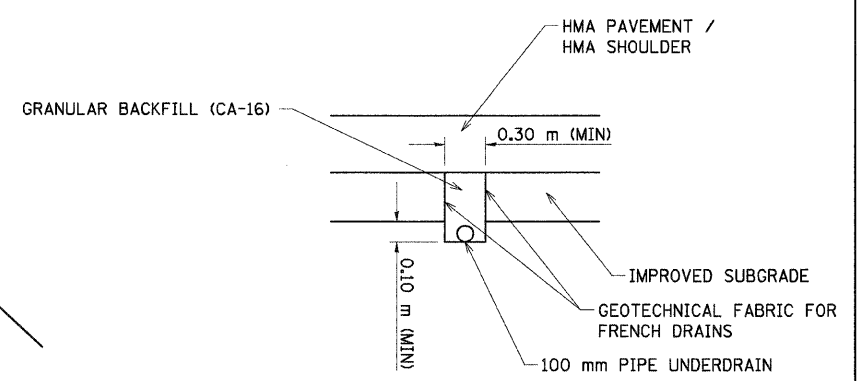
DETAIL OF PAVEMENT TERMINATION FOR RAMPS
NOT TO SCALE

- NOTES:**
1. THE EXISTING TERMINATION SHALL BE CLEANED AND PRIMED AS DIRECTED BY THE ENGINEER.
 2. PRIOR TO PLACING THE SURFACE COURSE AT A HOT-MIX ASPHALT PAVEMENT TERMINATION, THE CONTRACTOR SHALL SAW THE SURFACE COURSE AND REMOVE EXCESS HOT-MIX ASPHALT MATERIAL AS DIRECTED BY THE ENGINEER. THE COST OF SAWING AND REMOVING THIS MATERIAL SHALL BE INCIDENTAL TO THE HOT-MIX ASPHALT PAVEMENT OF THE TYPE AND THICKNESS SPECIFIED. THE COST OF CLEANING AND REMOVING MATERIAL AT THE EXISTING TAPER SHALL BE INCIDENTAL TO THE HOT-MIX ASPHALT PAVEMENT OF THE TYPE AND THICKNESS SPECIFIED.



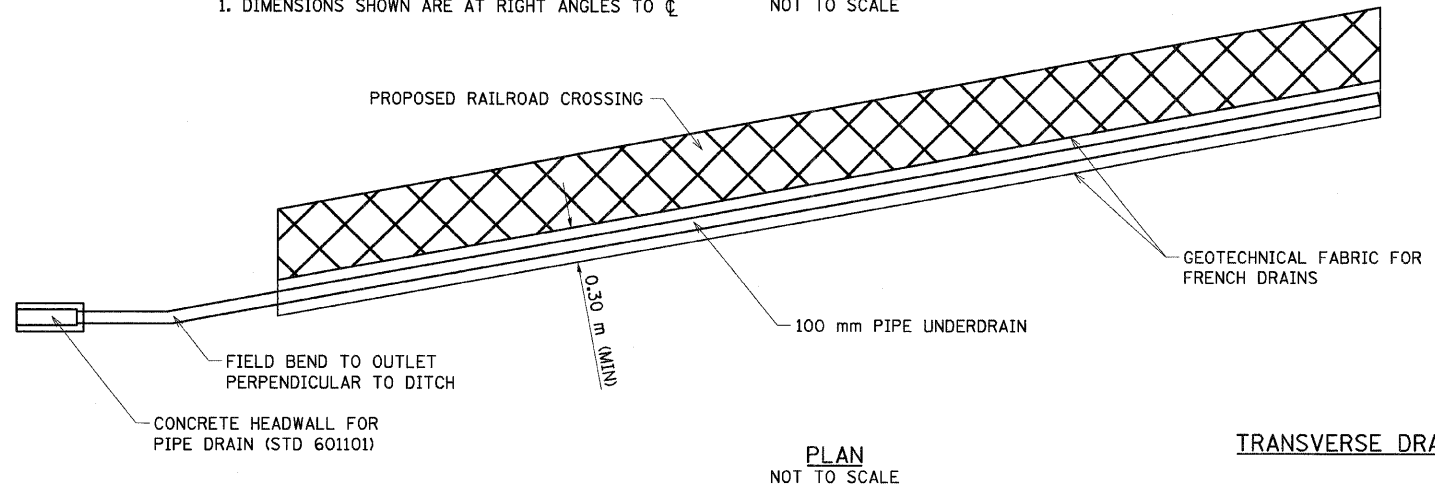
CROSS SECTION
NOT TO SCALE

- NOTE:**
1. DIMENSIONS SHOWN ARE AT RIGHT ANGLES TO ϕ



ELEVATION
NOT TO SCALE

- NOTES:**
- TRANSVERSE DRAIN MATERIAL AND CONSTRUCTION SHALL CONFORM TO SECTION 610 OF THE STANDARD SPECIFICATIONS EXCEPT THAT NO FABRIC ENVELOPE IS REQUIRED ON PERFORATED PIPE AND THE GRANULAR BACKFILL GRADATION SHALL BE CA-16.
- GEOTECHNICAL FABRIC SHALL BE NON-WOVEN NEEDLE PUNCHED MATERIAL.
- ALL MATERIALS WILL NOT BE MEASURED SEPERATELY, BUT WILL BE INCLUDED IN THE COST PER EACH FOR THE PAY ITEM "TRANSVERSE DRAINS COMPLETE".



PLAN
NOT TO SCALE

TRANSVERSE DRAIN - TANGENT PAVEMENT

| REVISIONS | |
|-----------|------|
| NAME | DATE |
| | |
| | |
| | |
| | |
| | |
| | |
| | |
| | |
| | |
| | |

ILLINOIS DEPARTMENT OF TRANSPORTATION
MISCELLANEOUS DETAILS
FAP 310 (IL 255)
SECTION 60-15-2 & 60-15HB-2
MADISON COUNTY
DRAWN BY EBB
CHECKED BY
DATE

12/7/2007

p:\00f_iles\000024\dl111\details\misc\miscellaneous-details.dgn