

bgj

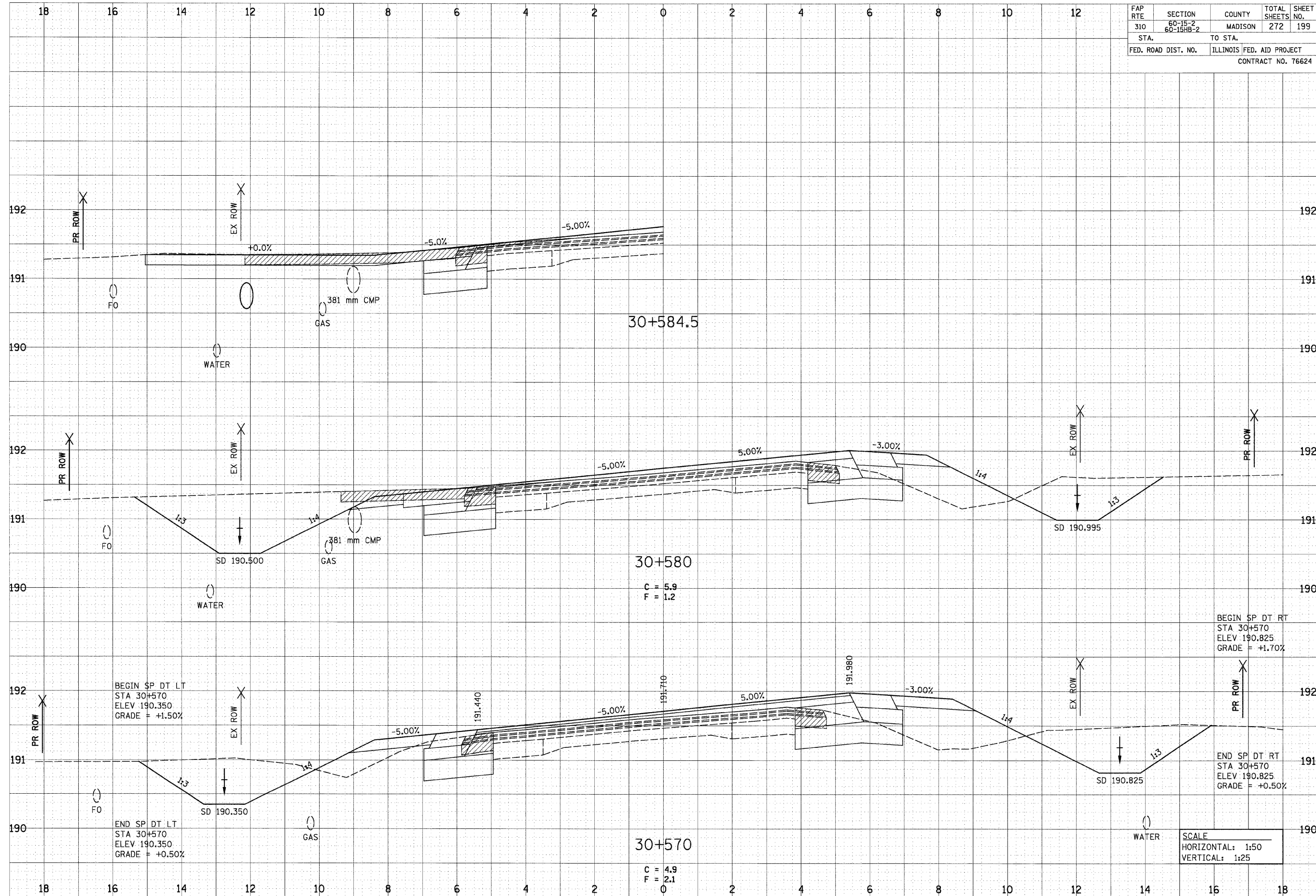
12/7/2007

p:\2007\1111\crosssections\sec015c.dgn

FAP RTE	SECTION	COUNTY	TOTAL SHEETS	SHEET NO.
310	60-15-2 60-15HB-2	MADISON	272	199
STA.		TO STA.		
FED. ROAD DIST. NO.		ILLINOIS FED. AID PROJECT		
CONTRACT NO. 76624				

BY	DATE
SURVEYED	
NOTE BOOK	
AREAS	
AREAS CHECKED	

BY	DATE
SURVEYED	
NOTE BOOK	
AREAS	
AREAS CHECKED	



BEGIN SP DT RT
 STA 30+570
 ELEV 190.825
 GRADE = +1.70%

END SP DT RT
 STA 30+570
 ELEV 190.825
 GRADE = +0.50%

SCALE
 HORIZONTAL: 1:50
 VERTICAL: 1:25