

\$XXX\$

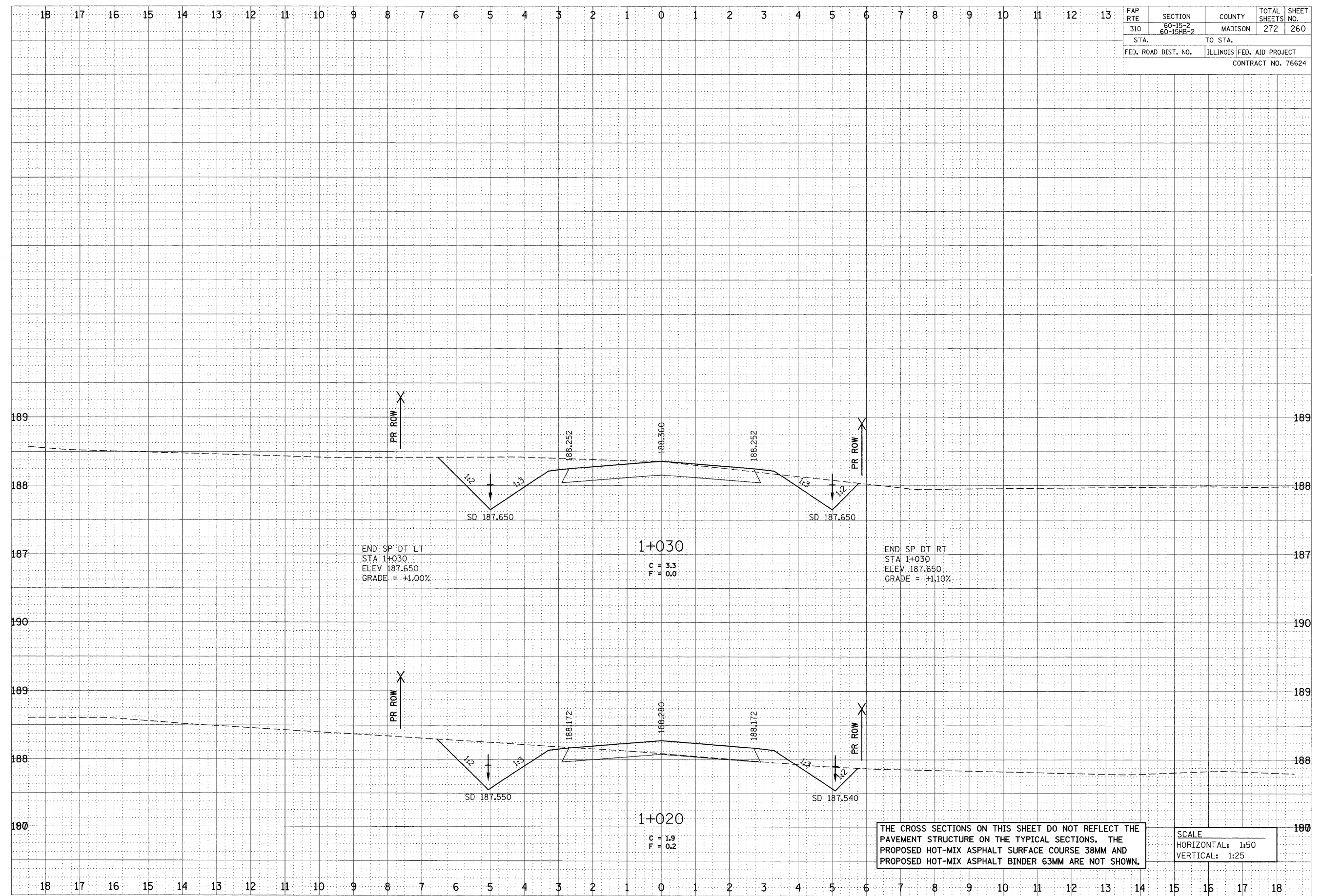
1/13/2009

\$FILE\$

FINAL SURVEY	SURVEYED	BY	DATE
NOTE BOOK	PLOTTED		
NO.	TEMPLATE		
	AREAS CHECKED		

ORIGINAL SURVEY	SURVEYED	BY	DATE
NOTE BOOK	PLOTTED		
NO.	TEMPLATE		
	AREAS CHECKED		

FAP RTE	SECTION	COUNTY	TOTAL SHEETS	SHEET NO.
310	60-15-2 60-15HB-2	MADISON	272	260
STA.		TO STA.		
FED. ROAD DIST. NO.		ILLINOIS FED. AID PROJECT		
CONTRACT NO. 76624				



THE CROSS SECTIONS ON THIS SHEET DO NOT REFLECT THE PAVEMENT STRUCTURE ON THE TYPICAL SECTIONS. THE PROPOSED HOT-MIX ASPHALT SURFACE COURSE 38MM AND PROPOSED HOT-MIX ASPHALT BINDER 63MM ARE NOT SHOWN.

SCALE
 HORIZONTAL: 1:50
 VERTICAL: 1:25

SERVICE DRIVE 3, STA 1+020 TO STA 1+030