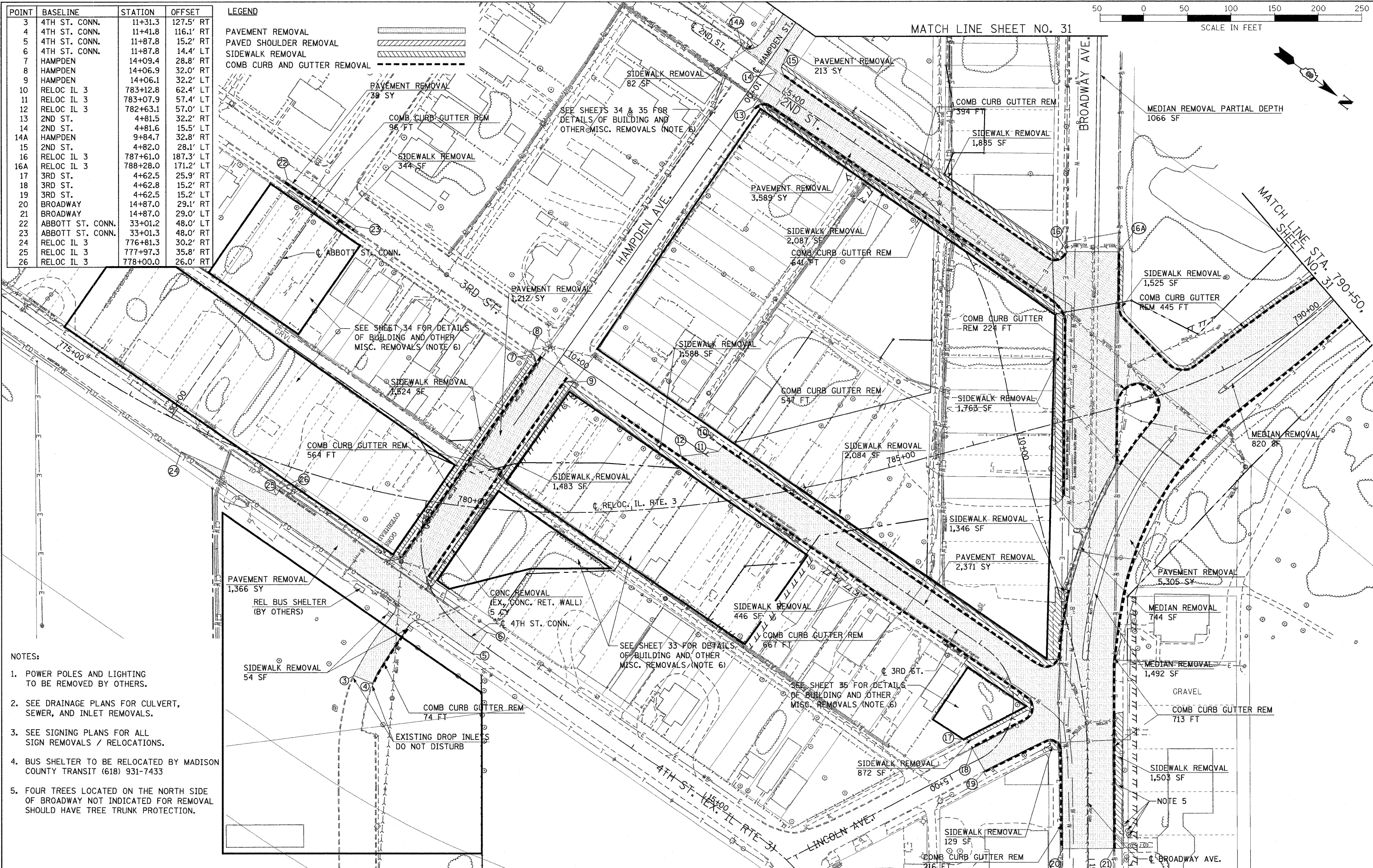
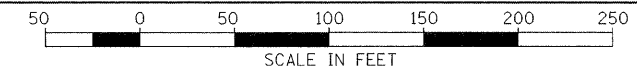


| POINT | BASELINE | STATION | OFFSET |
|-------|------------------|----------|-----------|
| 3 | 4TH ST. CONN. | 11+31.3 | 127.5' RT |
| 4 | 4TH ST. CONN. | 11+41.8 | 116.1' RT |
| 5 | 4TH ST. CONN. | 11+87.8 | 15.2' RT |
| 6 | 4TH ST. CONN. | 11+87.8 | 14.4' LT |
| 7 | HAMPDEN | 14+09.4 | 28.8' RT |
| 8 | HAMPDEN | 14+06.9 | 32.0' RT |
| 9 | HAMPDEN | 14+06.1 | 32.2' LT |
| 10 | RELOC IL 3 | 783+12.8 | 62.4' LT |
| 11 | RELOC IL 3 | 783+07.9 | 57.4' LT |
| 12 | RELOC IL 3 | 782+63.1 | 57.0' LT |
| 13 | 2ND ST. | 4+81.5 | 32.2' RT |
| 14 | 2ND ST. | 4+81.6 | 15.5' LT |
| 14A | HAMPDEN | 9+84.7 | 32.8' RT |
| 15 | 2ND ST. | 4+82.0 | 28.1' LT |
| 16 | RELOC IL 3 | 787+61.0 | 187.3' LT |
| 16A | RELOC IL 3 | 788+28.0 | 171.2' LT |
| 17 | 3RD ST. | 4+62.5 | 25.9' RT |
| 18 | 3RD ST. | 4+62.8 | 15.2' RT |
| 19 | 3RD ST. | 4+62.5 | 15.2' LT |
| 20 | BROADWAY | 14+87.0 | 29.1' RT |
| 21 | BROADWAY | 14+87.0 | 29.0' LT |
| 22 | ABBOTT ST. CONN. | 33+01.2 | 48.0' LT |
| 23 | ABBOTT ST. CONN. | 33+01.3 | 48.0' RT |
| 24 | RELOC IL 3 | 776+81.3 | 30.2' RT |
| 25 | RELOC IL 3 | 777+97.3 | 35.8' RT |
| 26 | RELOC IL 3 | 778+00.0 | 26.0' RT |

| LEGEND | |
|------------------------------|--|
| PAVEMENT REMOVAL | |
| PAVED SHOULDER REMOVAL | |
| SIDEWALK REMOVAL | |
| COMB CURB AND GUTTER REMOVAL | |



- NOTES:
- POWER POLES AND LIGHTING TO BE REMOVED BY OTHERS.
 - SEE DRAINAGE PLANS FOR CULVERT, SEWER, AND INLET REMOVALS.
 - SEE SIGNING PLANS FOR ALL SIGN REMOVALS / RELOCATIONS.
 - BUS SHELTER TO BE RELOCATED BY MADISON COUNTY TRANSIT (618) 931-7433
 - FOUR TREES LOCATED ON THE NORTH SIDE OF BROADWAY NOT INDICATED FOR REMOVAL SHOULD HAVE TREE TRUNK PROTECTION.

| | | | | | | | | | | |
|-------------------------------|----------------------|--------------------|---|---|---|---|-------------------|------------------|--------------------|----------------|
| FILE NAME = r:3nrem03_new.dgn | USER NAME = weaverlg | DESIGNED - A. FREY | REVISED - | STATE OF ILLINOIS DEPARTMENT OF TRANSPORTATION | REMOVAL PLAN RELOCATED IL RTE 3 STA 774+55 TO STA 790+50 | F.A. RTE. = 788 | SECTION = 520-2-2 | COUNTY = MADISON | TOTAL SHEETS = 173 | SHEET NO. = 30 |
| PLOT SCALE = #SCALE# | CHECKED - L. WEAVER | REVISED - | SCALE: SHEET NO. 1 OF 6 SHEETS STA. TO STA. | | | FED. ROAD DIST. NO. = ILLINOIS FED. AID PROJECT | | | | |
| PLOT DATE = 02/02/2009 | DATE = 02/06/2009 | REVISED - | | | | CONTRACT NO. 76633 | | | | |
| | | | | | | | | | | |