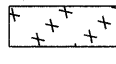



LEGEND

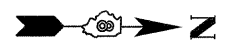
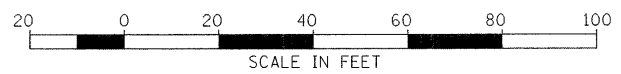
BUILDING REMOVED PREVIOUSLY 

CONCRETE / DRIVEWAY REMOVAL 

NOTES:

1. TREES LABELED AS LESS THAN 6" DIA DIAMETER ARE FOR INFORMATION ONLY.

TREE REMOVAL LIMITS		
AREA 13		
781+05.0	17.3' RT	RELOC. IL 3
781+72.2	67.8' RT	RELOC. IL 3
781+47.3	68.0' RT	RELOC. IL 3
781+15.4	47.4' RT	RELOC. IL 3
781+01.7	50.4' RT	RELOC. IL 3
780+88.0	70.7' RT	RELOC. IL 3
780+82.7	71.5' RT	RELOC. IL 3
780+52.8	126.0' RT	RELOC. IL 3
780+43.5	119.9' RT	RELOC. IL 3
780+46.8	106.5' RT	RELOC. IL 3



FILE NAME =
r3nrem07_new.dgn

USER NAME = weaverlg
PLOT SCALE = \$SCALE\$
PLOT DATE = 02/02/2009

DESIGNED - A. FREY
DRAWN - A. FREY
CHECKED - L. WEAVER
DATE - 02/06/2009

REVISED -
REVISED -
REVISED -
REVISED -

**STATE OF ILLINOIS
DEPARTMENT OF TRANSPORTATION**

**REMOVAL DETAIL
3RD & 4TH STREETS NORTH OF HAMPDEN**

SCALE: SHEET NO. 4 OF 6 SHEETS STA. TO STA.

F.A. RTE.	SECTION	COUNTY	TOTAL SHEETS	SHEET NO.
788	520-2-2	MADISON	173	33
FED. ROAD DIST. NO. ILLINOIS FED. AID PROJECT				
CONTRACT NO. 76633				