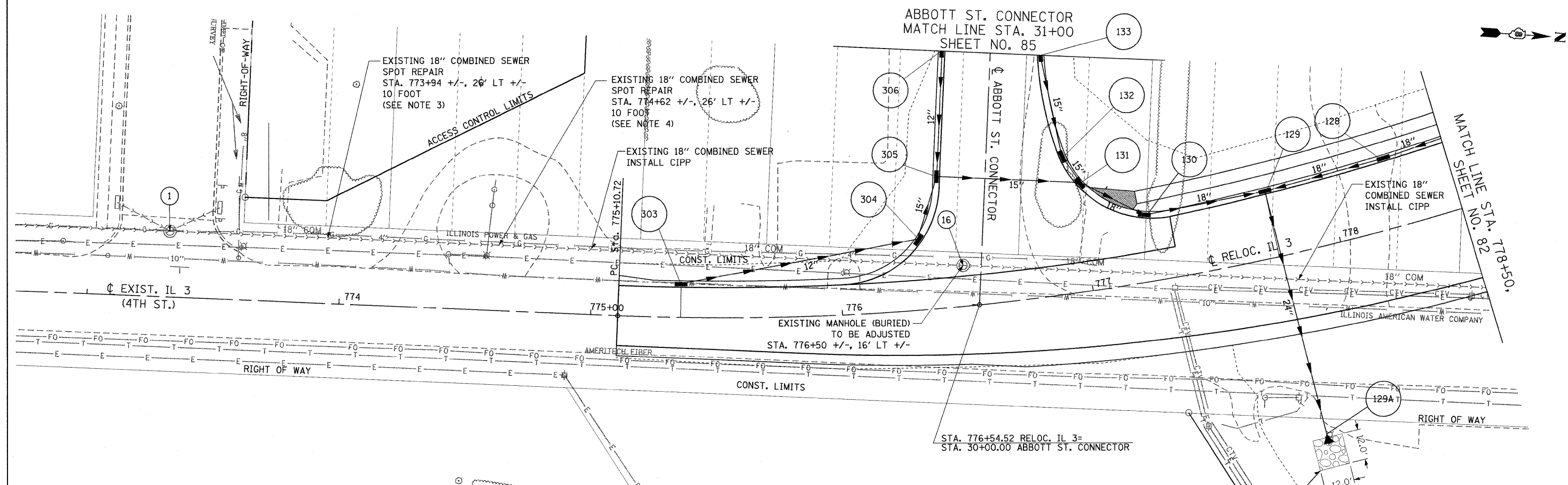


ABBOTT ST. CONNECTOR  
MATCH LINE STA. 31+00  
SHEET NO. 85



CONDITION OF EXISTING COMBINED SEWERS

Structure	CCTV Section #	CCTV Date	Condition
1 16	5a	12/21/2007	Fair - poor. Large hole at 61' and 129' from #1 Joints are separated slightly.
2 (403) 3	8	12/26/2007	Poor - top of pipe missing at 68'; heavy roots/debris at 92'; water level at 45% most of inspection. Distances from #3.
4 (HMD-6) 2 (403)	6	12/26/2007	Fair - heavy debris/sand throughout entire reach
6 (2ND-1) HMD-7	11	1/3/2008	Fair-poor - 40' to 90' apparently some type of liner possibly NSCL; minor to moderate longitudinal cracking at 90' to 116'. SC at 121' has moderate roots. The TV operator could not televise after 300' due to debris. Distances from #6.
7 6 (2ND-1)	1	12/14/2007	Fair. Moderate broken pipe at 88' and slight to moderate circumferential crack at 81' with light roots and moderate offset joints in a couple locations. Distances from #7.
3RD-4 6 (2ND-1)	4	12/18/2007	Fair-poor. Heavy debris/sludge most of the reach; moderate/severe offset joint at 375' from #8. A new structure (3RD-4) will be added at approximately 48' from #8 toward #6. The pipe from #8 to 3RD-4 will be grouted (Abandoned).
10 4 (HMD-6)	13	1/11/2008	Fair - poor. Moderate to heavy debris/roots throughout reach. Joints are slightly to moderate separated throughout.
11 14 (600A)	9a	1/3/2008	Fair - poor. Light to moderate roots and minor longitudinal crack first 60'. Square pipe at 168' from #11 to MH #14 (at 177'). Distances from #11.
15 6 (2ND-1)	10b	1/3/2008	Good. VSB (Vitrified Segmental Block) was used for first 30'. Missing block at 20'. Turns into VCP at 30'. Minor longitudinal crack at 115' to 120'. Distances from #15
16 2 (403)	5b	1/4/2008	Fair. Joints are separated slightly.

- NOTES:
1. THE REPLACEMENT OF EXISTING SEWERS REQUIRES AN OPEN TRENCH MEETING THE LATEST O.S.H.A. STANDARDS.
  2. SEE STORM SEWER, DRAINAGE STRUCTURE, AND COMBINED SEWER REHABILITATION SCHEDULES FOR ADDITIONAL DETAILS.
  3. SEWER SPOT REPAIR 1- AT 61 FEET FROM #1
  4. SEWER SPOT REPAIR 2- AT 129 FEET FROM #1