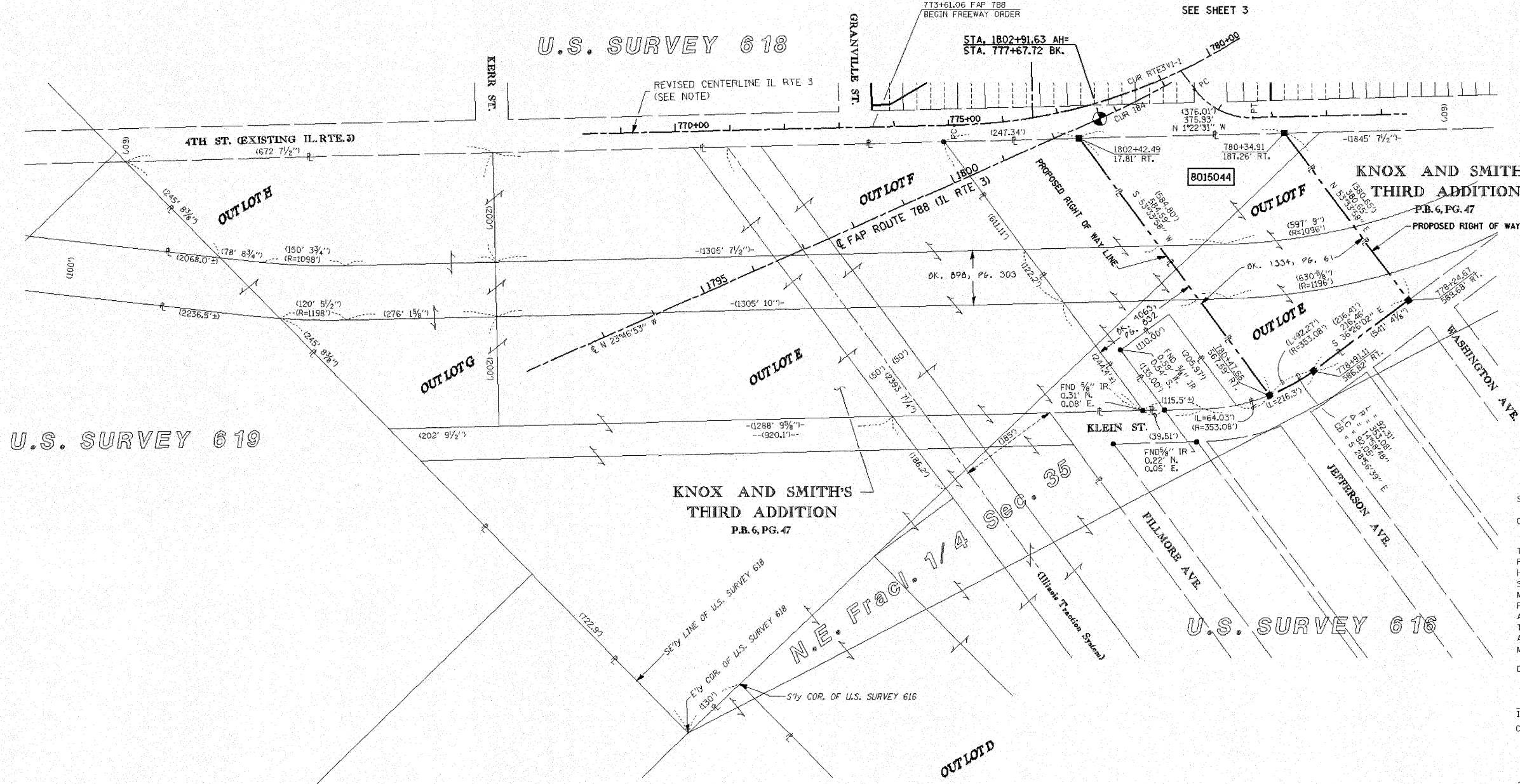


PART OF U.S. SURVEY 618 & 619, MADISON CO., ILLINOIS



U.S. SURVEY 619

U.S. SURVEY 618

SEE SHEET 3

KNOX AND SMITH'S
THIRD ADDITION
P.B. 6, PG. 47

KNOX AND SMITH'S
THIRD ADDITION
P.B. 6, PG. 47

U.S. SURVEY 616

PROPOSED CURVE DATA CUR 184	(REVISED) PROPOSED CURVE DATA CUR RTE3VI-1
PI STA. = 781+38.06	PI STA. = 788+64.72
Δ = 27°15'00"	Δ = 38°19'46"
D = 3445.00'	D = 5437.30'
R = 1,527.89'	R = 1,018.59'
T = 370.34'	T = 354.01'
L = 726.67'	L = 681.41'
E = 44.24'	E = 59.76'
P.C. STA. = 777+67.72	P.C. STA. = 775+10.72
P.C.C. STA. = 784+94.39	P.C.C. STA. = 781+92.13

PARCEL NO.	OWNER	TOTAL HOLDING	R.O.W. REQUIRED	DEDICATION REQUIRED	REMAINDER	TEMP EASEMENT	EASEMENT PURPOSE	PERMANENT TAX NUMBER	PROPERTY ACQUIRED BY
8015044	MADISON COUNTY HOUSING AUTHORITY TITLE REPORT NO. MA-2017.10	3,4435 AC 149,997 SF	3,4435 AC 149,997 SF	N/A	0.0000 AC 0 SF	N/A	N/A	21-2-19-35-12-202-032	

STATE OF ILLINOIS)
COUNTY OF LEE) SS

THIS IS TO CERTIFY THAT I, COVENTINE FIDIS, AN ILLINOIS PROFESSIONAL LAND SURVEYOR, HAS SURVEYED THE PLAT OF HIGHWAYS SHOWN HEREON IN ST. CLAIR COUNTY, THAT THE SURVEY IS TRUE AND COMPLETE AS SHOWN TO THE BEST OF MY KNOWLEDGE AND BELIEF, THAT THE PLAT CORRECTLY REPRESENTS SAID SURVEY, THAT ALL MONUMENTS FOUND AND ESTABLISHED ARE OF PERMANENT QUALITY AND OCCUPY THE POSITIONS SHOWN THEREON AND THAT THE MONUMENTS ARE SUFFICIENT TO ENABLE THE SURVEY TO BE RETRACED. MADE FOR THE DEPARTMENT OF TRANSPORTATION.

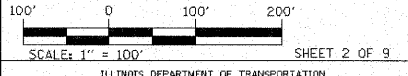
ILLINOIS PROFESSIONAL LAND SURVEYOR NO. 2159
COVENTINE FIDIS MY LICENSE EXPIRES 11/30/08



BEARINGS SHOWN HEREON ARE BASED ON THE MISSISSIPPI RIVER CROSSING (NAD83) COORDINATE SYSTEM WHICH IS A MODIFIED UNIVERSAL TRANSVERSE MERCATOR (UTM) SYSTEM, ZONE 15 NORTH. SEE SHEET 9 FOR COORDINATE LIST



ILLINOIS DEPARTMENT OF TRANSPORTATION
PLAT OF HIGHWAYS FOR
FAP ROUTE 788 (IL 3)
SECTION (520-2-2)
MADISON COUNTY
JOB NO. R-98-015-00
STATION 773+61 TO STATION 780+00



NOTE: ALIGNMENT WAS REVISED.
STATIONING WILL NOT MATCH CONSTRUCTION PLANS IN THIS REALIGNMENT

FILE NAME = F:\3\PLAT1_new.dgn	USER NAME = rossrl	DESIGNED - L. WEAVER	REVISED -	STATE OF ILLINOIS DEPARTMENT OF TRANSPORTATION	RELOCATED IL RTE. 3 PLAT OF HIGHWAYS	F.A. RTE. 788	SECTION 520-2-2	COUNTY MADISON	TOTAL SHEETS 173	SHEET NO. 102		
PLOT SCALE = #SCALE#	PLOT DATE = 02/22/2009	DRAWN - L. WEAVER	REVISED -			SCALE:	SHEET NO. 1 OF 7 SHEETS	STA. TO STA.	CONTRACT NO. 76633			
		CHECKED - A. FREY	REVISED -			ILLINOIS DEPARTMENT OF TRANSPORTATION DIVISION OF HIGHWAYS/DISTRICT 6 1102 EASTPORT PLAZA DRIVE COLLINGSVILLE, ILLINOIS 62234-6198						
		DATE - 02/06/2009	REVISED -			ILLINOIS FEDERAL AID PROJECT						